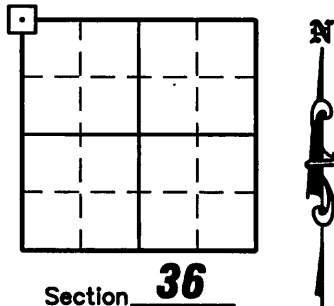


MAP # **L2526**  
 DATE FILED **JUL 16 2008**  
 BY **JAB**  
 DESCRIPTION FILED

# U.S. PUBLIC LAND SURVEY MONUMENT RECORD

NOTE: This form is intended and designed to fulfill all requirements of Wisconsin Administrative Code, Chapter A-E 7 .08 U.S. Public Land Survey Monument Record (3)(a)(b)(c)(d)(e)(f)(g)(h)(i). An additional sheet may be added if necessary to conform with said requirements.

(a) Corner location: Township **38** North  
 Range **7** East  
 Town of **Lake Tomahawk**  
 County of **Oneida**



(b)(f)(g)(h) Description of monument found at this corner and if it was accepted, state all evidence (material, testimonial, occupation, plats, records, other monuments) used as a basis for accepting. If not accepted or if nothing was found, state evidence used as a basis for establishing location. If reestablished through lost corner proportionate methods, indicate all monuments, distances and directions used to establish. Indicate type of monument found or set and sign post.

1863 - Joseph H. Jenkins established this corner, set a wood post with two BT's: 16" White Pine, N54°W, 8 lks. (5.28'); 10" White Pine, S74°W 7 lks. (4.62').

???? - RIPCO restored this corner and set a Witness Corner East 50 Links (33.00').

April 28, 1996 - Milo E. Stefan found RIPCO'S monument (W.C.) with a railroad spike in blacktop road surface at proper distance and direction from W.C. He made 3 new BT's and set a plastic sign post 1' East on W.C.

June 27, 2008 - Due to road construction Nicolet Surveyors, Inc. was contacted by the Oneida County Land Information Office to preserve the location of this survey marker. Jonathan W. Dulin found a railroad spike 4 feet East of the centerline of Fox Road along with 4 bearing trees and a 1-1/2" Iron pipe with 3" square brass plate (RIPCO W.C.). We witnessed the corner as shown below.

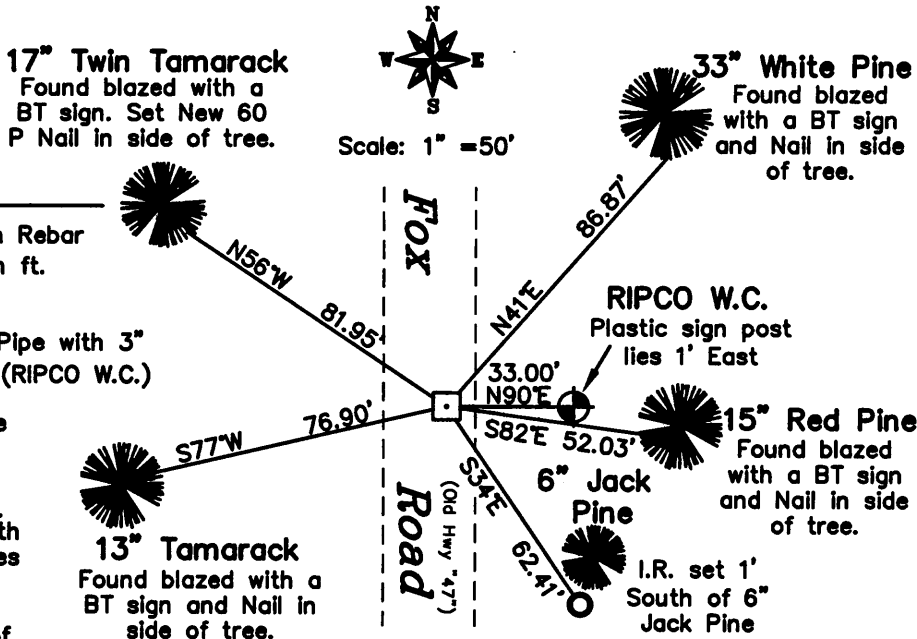
(c)(d)(e) Plan view of corner with ties to at least 4 witness monuments. If in disagreement with previously established corner, show the distances between the two corners and also indicate the ties to the disputed corner.

## Legend

- Set 3/4" x 24" Iron Rebar Weighing 1.50 lbs/lin ft. W/Yellow Ref Cap
- Found 1-1/2" Iron Pipe with 3" Square Brass Plate (RIPCO W.C.)
- Found Railroad Spike

### Notes:

1. All bearings taken with a compass and distances measured with a tape.
2. Corner lies 4' East of centerline.



(i) I, Jonathan W. Dulin, certify that the corner location on this record was determined by me under my direction and control and that this U.S. Public Land Survey Monument is correct and complete to the best of my knowledge and belief.

Signature Date **6/27/08**



3807260000

Index No. V-21