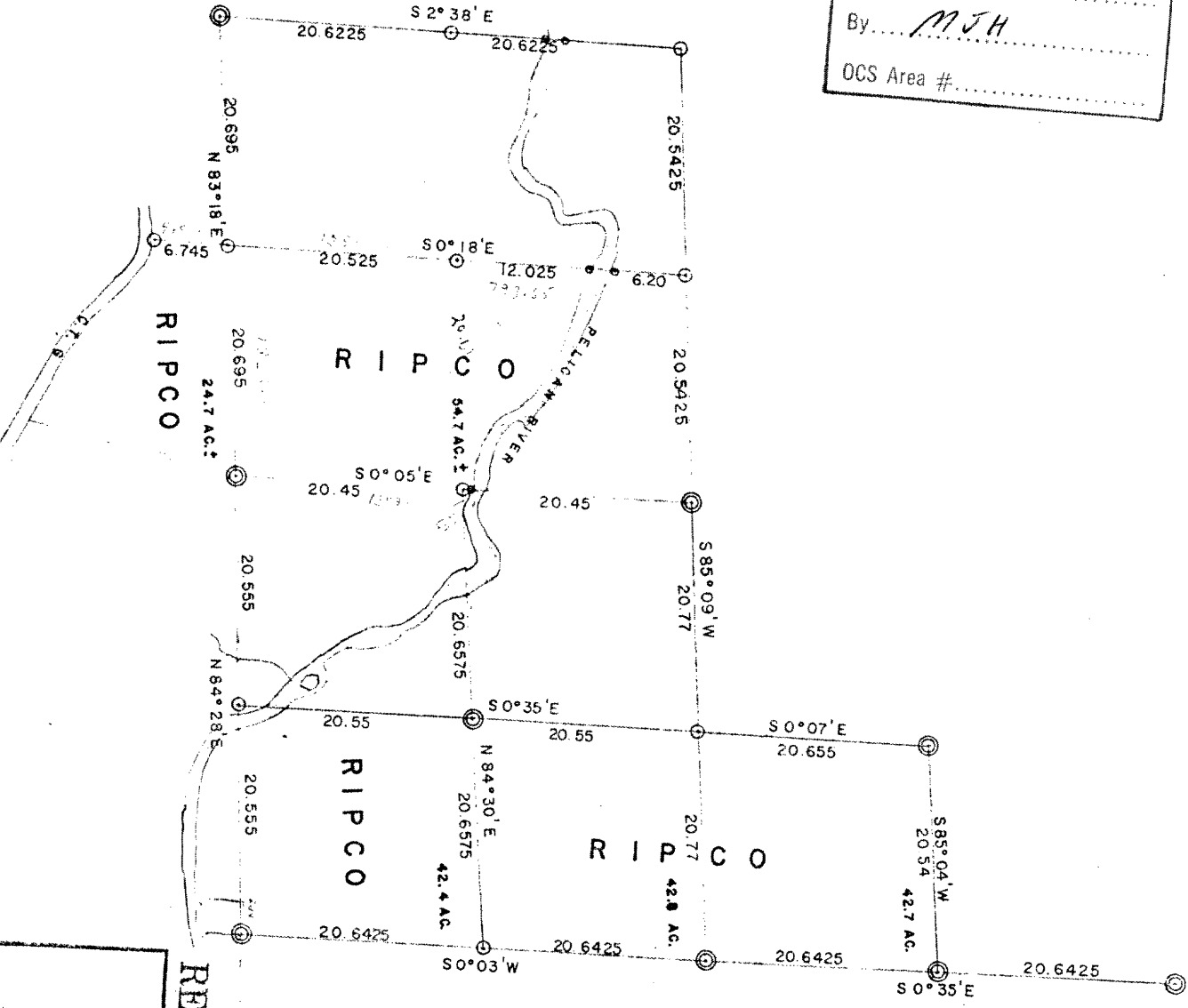


RECEIVED & FILED # **L253**
Oneida County Surveyor's Office
Date: **FEB. 14 1986**
By: **MJH**
DCS Area #.....



RESURVEY OF S10C22. T36N R9E

ONEIDA COUNTY, WISCONSIN
MILNE ANDERSON FIELD COMPANY
DIVISION OF SURVEYING
PULASKI AVENUE, MILWAUKEE, WISCONSIN

SCALES: "1/4" INCH = 40 FT. 3-24-61 W.M. 1070

○ Corners established by this survey.
⊙ Other accepted corners.
● Boundaries and lines.

L253