

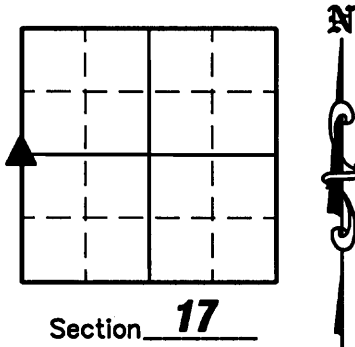
L2532A

L2532A

U.S. PUBLIC LAND SURVEY MONUMENT RECORD

NOTE: This form is intended and designed to fulfill all requirements of Wisconsin Administrative Code, Chapter A-E 7 .08 U.S. Public Land Survey Monument Record (3)(a)(b)(c)(d)(e)(f)(g)(h)(i). An additional sheet may be added if necessary to conform with said requirements.

(a) Corner location: Township 36 North
Range 9 East
Town of Pelican
County of Oneida



(b)(f)(g)(h) Description of monument found at this corner and if it was accepted, state all evidence (material, testimonial, occupation, plats, records, other monuments) used as a basis for accepting. If not accepted or if nothing was found, state evidence used as a basis for establishing location. If reestablished through lost corner proportionate methods, indicate all monuments, distances and directions used to establish. Indicate type of monument found or set and sign post.

1863 - William Daugherty established this corner and set wood post with BT's: 7" Sugar Maple, S37°W, 26 links; 15" Birch, N60°E, 22 links.

1968 - Cameron set iron pipe - power pole, S67°W, 36.1'

1971 - Cameron found iron pipe in place along with power pole, S67°W, 36.1'

1992 - William E. Bandow found iron pipe and replaced it with an Oneida County Aluminum Monument and set new witness corners. They also found a 2" iron pipe S21°06'20"E, 5.42.

July 10, 2008 - Due to road construction Nicolet Surveyors, Inc. was contacted by the Oneida County Land Information Office to preserve the location of this survey marker. Jonathan W. Dulin found a P.K. nail 29' West of the centerline of County Highway "G" and 26' South of the centerline of College Drive along with 3 witness monument. We witnessed the corner as shown below.

(c)(d)(e) Plan view of corner with ties to at least 4 witness monuments. If in disagreement with previously established corner, show the distances between the two corners and also indicate the ties to the disputed corner.

See Sheet 2 hereof.

MAP # **L2532A**
DATE FILED **AUG 11 2008**
BY **JAP**
DESCRIPTION FILED
ONEIDA CO. SURVEYOR'S OFFICE

(i) I, Jonathan W. Dulin, certify that the corner location on this record was determined by me under my direction and control and that this U.S. Public Land Survey Monument is correct and complete to the best of my knowledge and belief.

Jonathan W. Dulin
Signature
Date 7/15/08

Sheet 1 of 2

3609182000

Index No. L-5

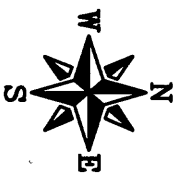
L2532A

L2532A

L 2532B

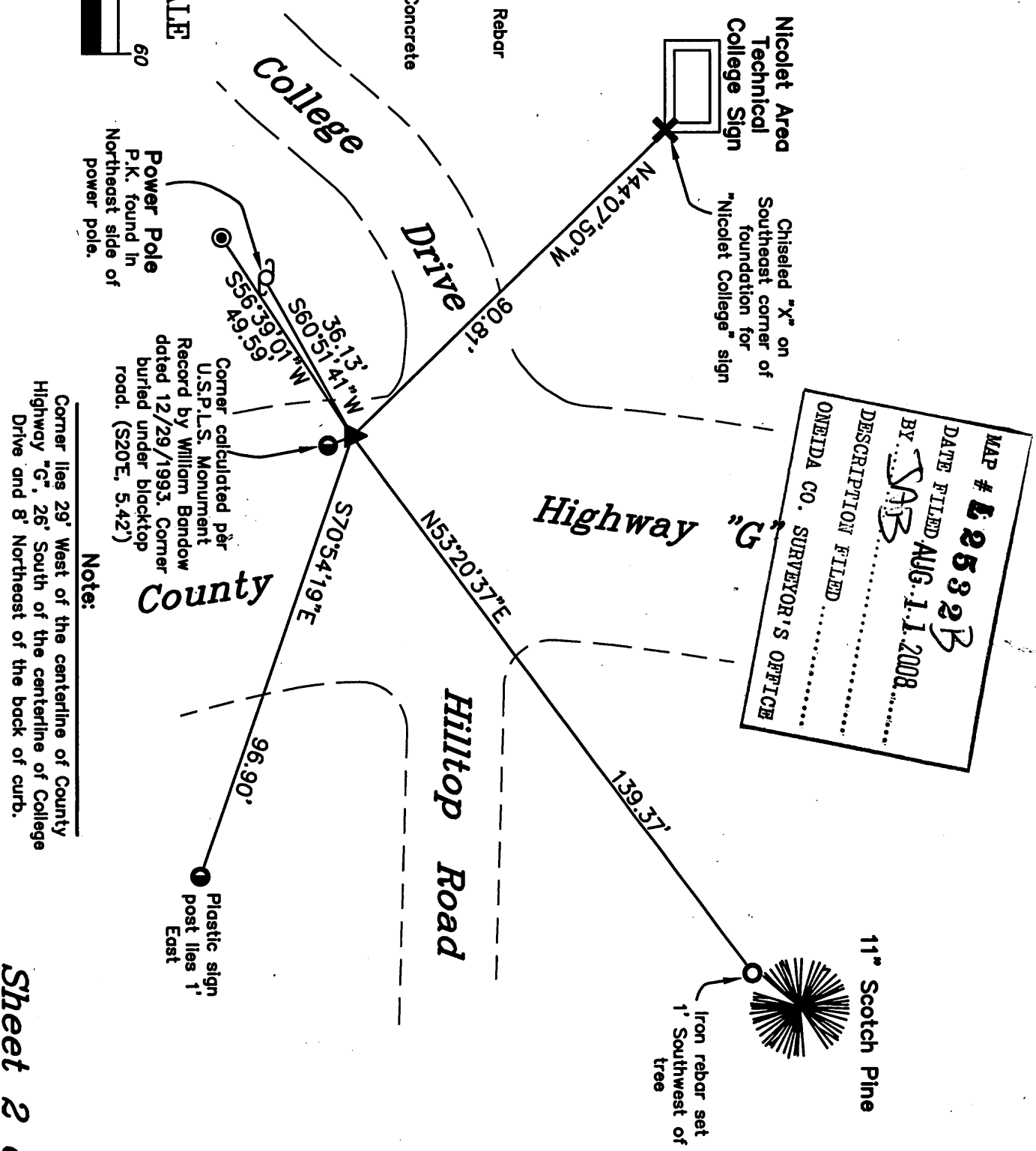
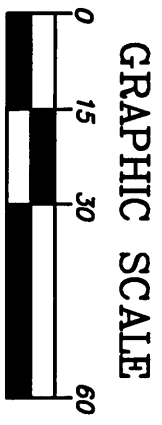
U.S. PUBLIC LAND SURVEY MONUMENT RECORD

L 2532B



Legend

- ▲ Found P.K. Nail
- ⊙ Found 1" Iron Pipe
- Set 3/4" x 24" Iron Rebar w/Yellow Ref Cap.
- Found 2" Iron Pipe
- ✕ Set Chiseled "X" in Concrete
- ⚡ Power Pole



MAP # **L 2532B**
 DATE FILED **AUG. 1. 2008**
 BY **SAB**
 DESCRIPTION FILED
 ONEIDA CO. SURVEYOR'S OFFICE

L 2532B

L 2532B