

MAP # **L 2533**

DATE FILED **AUG 11 2008**

BY **JAB**

DESCRIPTION FILED

ONEIDA CO. SURVEYOR'S OFFICE

L 2533

U.S. PUBLIC LAND SURVEY MONUMENT RECORD

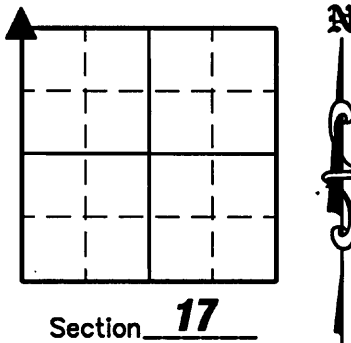
NOTE: This form is intended and designed to fulfill all requirements of Wisconsin Administrative Code, Chapter A-E 7 .08 U.S. Public Land Survey Monument Record (3)(a)(b)(c)(d)(e)(f)(g)(h)(i). An additional sheet may be added if necessary to conform with said requirements.

(a) Corner location: Township **36** North

Range **9** East

Town of **Pelican**

County of **Oneida**



(b)(f)(g)(h) Description of monument found at this corner and if it was accepted, state all evidence (material, testimonial, occupation, plats, records, other monuments) used as a basis for accepting. If not accepted or if nothing was found, state evidence used as a basis for establishing location. If reestablished through lost corner proportionate methods, indicate all monuments, distances and directions used to establish. Indicate type of monument found or set and sign post.

1863 - William Daugherty established this corner and set wood post with BT's: 15" Red Pine, S88°W, 147 links; 10" White Pine, S74°W, 128 links.

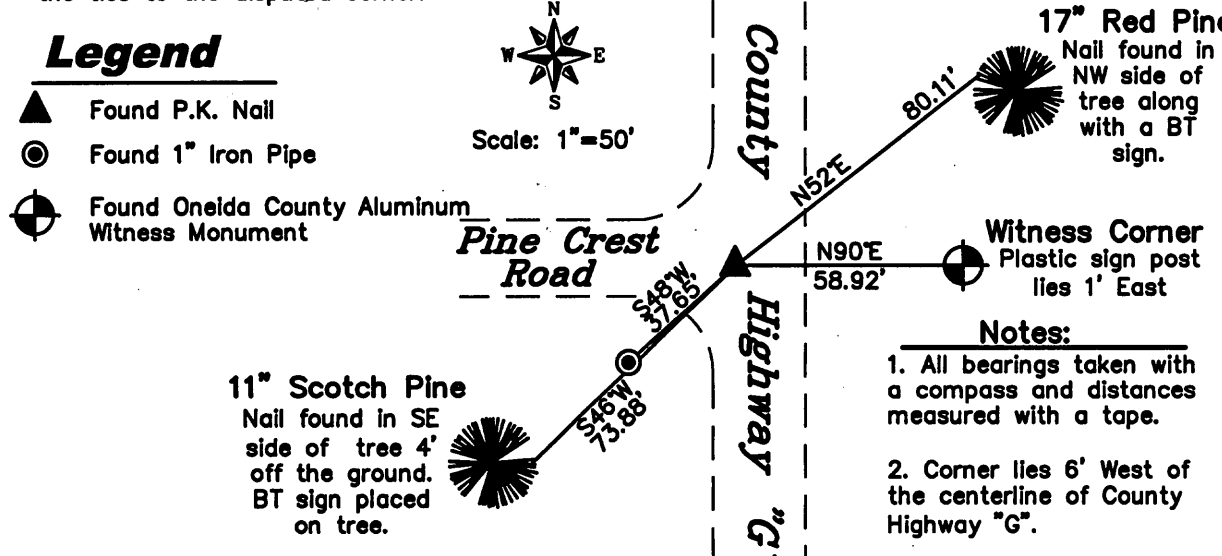
August 17, 1892 - Dorr used this corner to develop the Plat of "Shaw and Dorr Outlots" and set new BT's: 24" Hemlock, N72°W, 52-1/2 links (34.65'); 10" Hemlock, N58°E, 41 links (27.06')

October 27, 1989 - Gerald Inman restored this corner and made new BT's: 14" Red Pine, N53°E, 80.2'; 16" Red Maple, East, 68.95'; 1" iron pipe, N60°W, 64.74'; 1" iron pipe, S50°W, 37.41'

April 29, 1996 - Milo E. Stefan found P.K. nail in road surface, with Red Pine and Southwest iron pipe okay. Maple BT dead and the Northwest iron pipe has been grubbed out. He reset the iron pipe, made one new BT and set Oneida County Aluminum Witness Corner 58.97' East of corner.

July 10, 2008 - Due to road construction Nicolet Surveyors, Inc. was contacted by the Oneida County Land Information Office to preserve the location of this survey marker. Jonathan W. Dulin found a P.K. nail 6' West of the centerline of County Highway "G" along with 2 bearing trees, an iron pipe and an Oneida County Aluminum Witness Corner.

(c)(d)(e) Plan view of corner with ties to at least 4 witness monuments. If in disagreement with previously established corner, show the distances between the two corners and also indicate the ties to the disputed corner.



(i) I, Jonathan W. Dulin, certify that the corner location on this record was determined by me under my direction and control and that this U.S. Public Land Survey Monument is correct and complete to the best of my knowledge and belief.

Signature Jonathan W. Dulin Date 7/15/08

3609070000

Index No. J-5

L 2533

33927