

LAND CORNER PRESERVATION RECORD

It is the purpose of this record to preserve the location of a survey or land corner monument that may be disturbed, removed or inaccessible due to road construction or other activity. ROAD CONSTRUCTION

County: ONEIDA	City, Village, Town: TOWN OF ENTERPRISE	Setion: 36	Town: 35 N	Range 10 E
-------------------	--	---------------	---------------	---------------

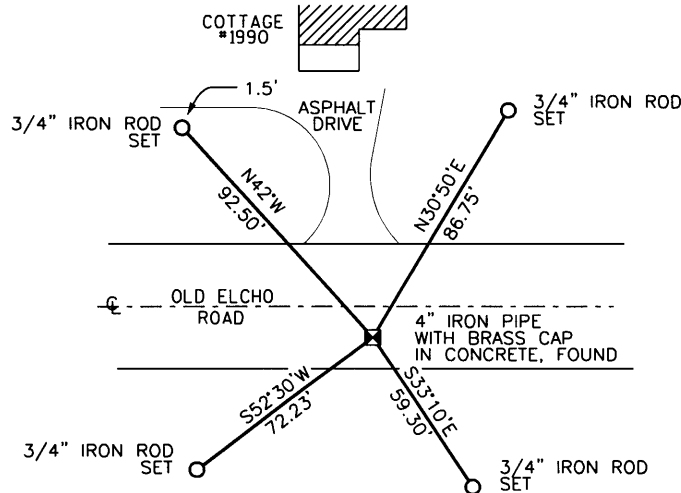
Describe what was found, its location and origin. If known, describe if the monument found is a 1/16 corner or other subdivisional corner; a monument called for in a deed; a monument shown on a survey map or plat etc and in what GL or 1/4 - 1/4 section or subdivision the monument is located.

1975 WM. KELLY CERTIFIED LAND CORNER RESTORATION  
 2007 EUGENE UTTECH FINDS 1 1/4" IP. CSM NO. 3493  
 2008 EUGENE UTTECH SETS WITNESS POINTS SHOWN BELOW

Approximate Location within Section. 36

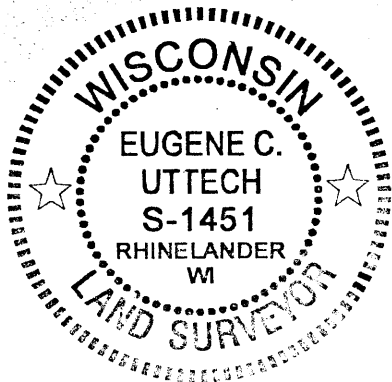
3510360020

Plan view map of landmark monument location with bearing and distance ties to a minimum of four described witness or reference monuments of concrete, natural stone, metal, live bearing trees or equivalent material or indicate datum & coordinates if tied out using GPS. Indicate what was reset.



NORTH ↑

MAP # **L 2568**  
 DATE FEB 18 2009  
 BY *RH*  
 DESC  
 ONEIDA CO. SURVEYOR'S OFFICE



PROFESSIONAL LAND SURVEYOR CERTIFICATE:

This land corner was referenced out in advance of road construction or other activity as an act of preserving survey evidence or monuments. This corner has not been tested for its accuracy during the course of this preservation. It is recommended that those using the corner position evaluate and verify it prior to use in a survey or other use.

I hereby certify that I am a duly licensed Professional Land Surveyor in the State of Wisconsin; that the location of this Survey or Land Corner was referenced by me or under my direct supervision and control and that the information shown on this record is true and correct to the best of my knowledge and belief.

*Eugene C Uttech*  
 Signature \_\_\_\_\_ Date 1-20-09