

12576

12576

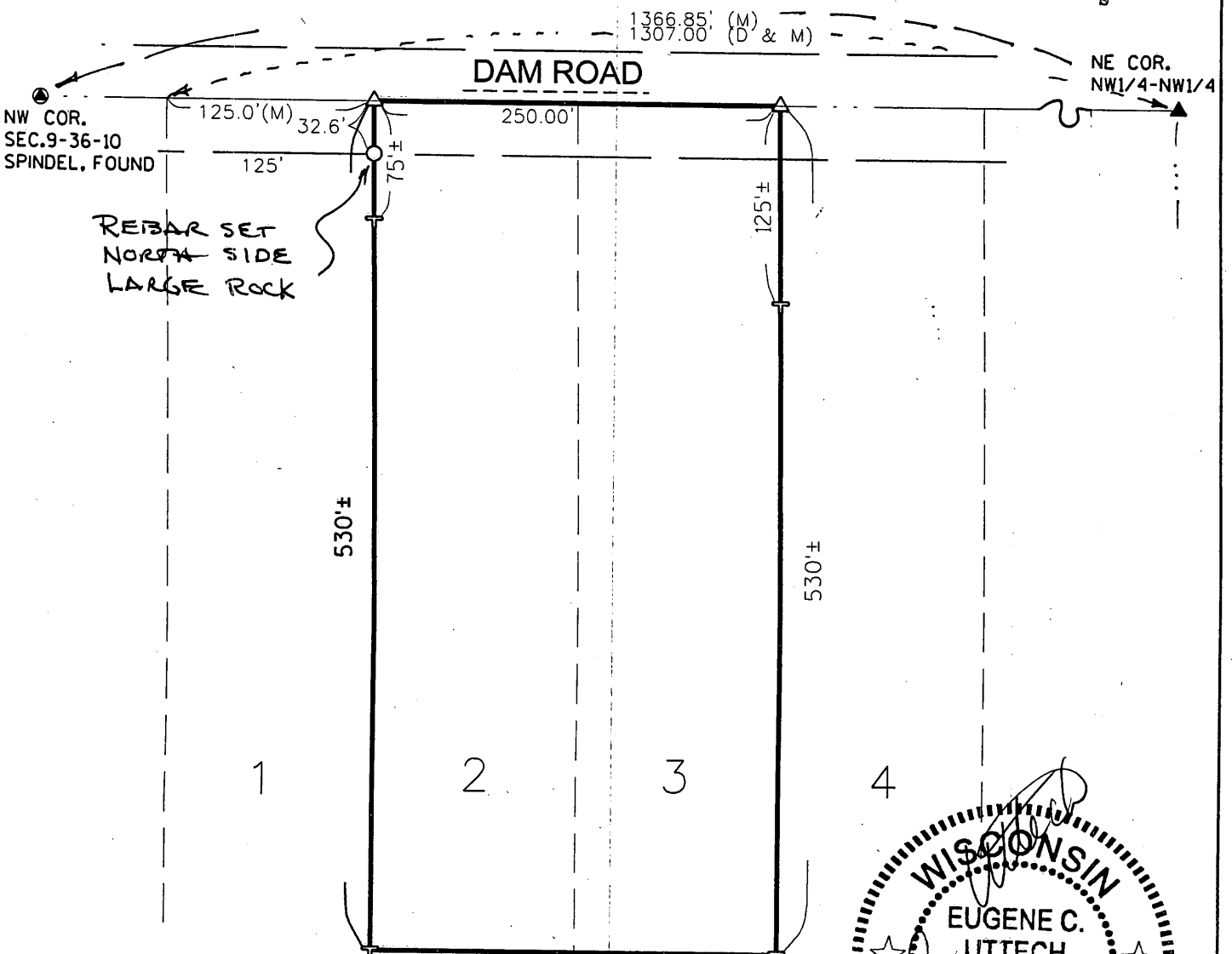
SURVEYOR:  
 EUGENE C. UTTECH  
 MSA PROFESSIONAL SERVICES, INC.  
 1835 NORTH STEVENS STREET  
 RHINELANDER, WI 54501  
 (715) 362-3244

**MSA**  
 PROFESSIONAL SERVICES  
 TRANSPORTATION • MUNICIPAL  
 DEVELOPMENT • ENVIRONMENTAL  
 1835 N. Stevens Street Rhineland, WI 54501  
 715-362-3244 1-800-844-7854 Fax: 715-362-4116  
 © MSA PROFESSIONAL SERVICES

MAP # **L2576**  
 DATE FILED **03/09/09**  
 BY **JMB**  
 DESCRIPTION FILED  
 ONEIDA CO. SURVEYOR'S OFFICE

PROJECT # 10866000	CLIENT: DAVE PEARSON
DRAWN BY: SJZ	
SURVEYOR: ECU	
FILE # BASE.DGN	
SHEET #	

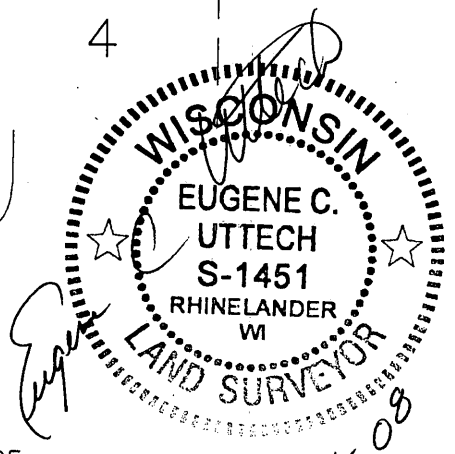
**A PARTIAL SURVEY OF LOTS 2 & 3 OF  
 EVERGREEN WOODS UNRECORDED PLAT  
 LOCATED IN NW1/4 OF THE NW1/4  
 SECTION 9, T.36N., R.10E.,  
 TOWN OF PELICAN,  
 ONEIDA COUNTY, WISCONSIN**



**LEGEND**

- 3/4" x 18" REBAR WEIGHING 1.5 lbs./LINEAL FT., SET
- ⊣ METAL FENCE POST WITH YELLOW METAL TOPS, FND
- △ PK NAIL, SET
- (D) DESCRIBED
- (M) MEASURED

I, EUGENE C. UTTECH, REGISTERED LAND SURVEYOR OF THE STATE OF WISCONSIN DO HEREBY CERTIFY THIS IS TRUE AND CORRECT TO THE BEST OF MY KNOWLEDGE AND BELIEF.



02921

12576