

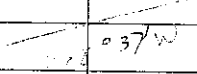
12579A

Marathon Lake  
3-31-7  
For Eugene Cross

NOTES FROM MARATHON  
County Surveyor 4-09.  
The notes are from  
Bob Wylie while  
working in the AREA

15  
9  
135

N 65° 37' E



156 60  
71 23  
65 37

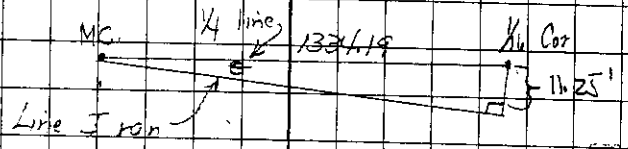
89 60  
88 37  
1 23  
90  
91 30

(33)

12579A

Aug 3 - 6 hours  
" 4 - 6 hours  
Aug 8 1 1/2 hours  
Aug 15 1 hour  
Aug 18 1 hour  
15 1/2 #25

Set up 1' north of M.C. on 1/4 line of  
lake shore. Sighted 31.03' offset on North  
South Sec line and turned 91° 36' as indicated  
by map. Ran east on 1' offset to 1/8 Cor  
and found line to be 10.25' south of Cor.  
or 10.25 + 1' = 11.25' South



$$\sin \theta = \frac{11.25}{1334.19} = .00843$$
$$\theta = 0^\circ 29'$$

179 63  
91 07  
88 56  
91 36'  
- 0 29'  
91 07'

(34)

MAP # 12579A  
DATE FILED 04/08/2009  
BY JAB  
ONEIDA CO. SURVEYOR'S OFFICE

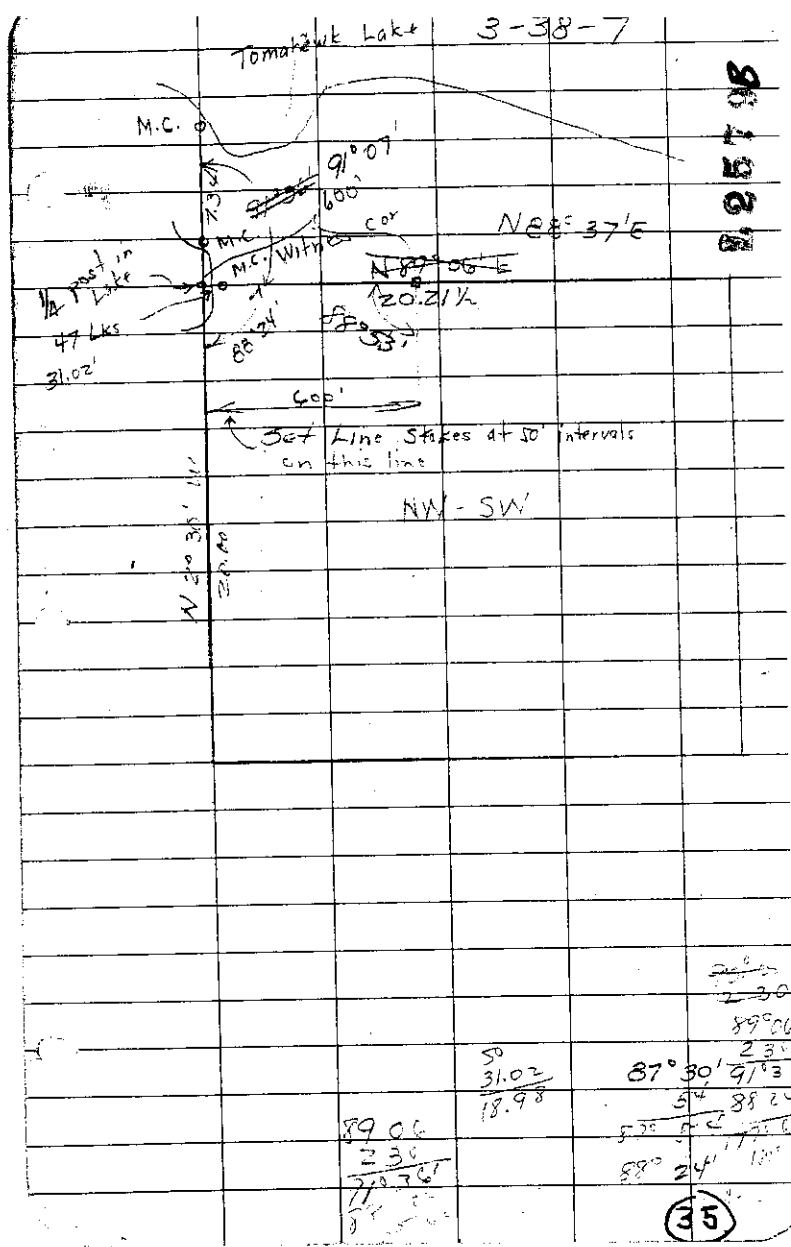
12579A

L2579B

L2579B

36

$\frac{18}{16.5}$   
 $\frac{13}{11.5}$



L2579B

89.06  
 230  
 71.76  
 31.02  
 18.98

89° 06'  
 230  
 $87^{\circ} 30' \frac{230}{91.13}$   
 54 88 24  
 570 52 17.76  
 88° 24' 18"

35

MAP # **L2579B**  
 DATE FILED **04/08/2009**  
 BY **JRB**  
 DESCRIPTION  
 ONEIDA CO. SURVEYOR'S OFFICE