

U.S. PUBLIC LAND SURVEY MONUMENT RECORD

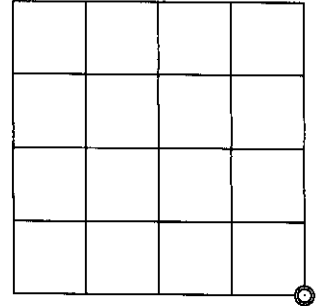
Note: This form is intended and designed to fulfill all requirements of the Wisconsin Administrative Code, Chapter A-E 7.08 U.S. Public Land Monument Record (3)(a)(b)(c)(d)(e)(f)(g)(h)(i). An additional sheet may be added if necessary to conform with said requirements.

(a) CORNER LOCATION:

Southeast corner of Section 27
Township 39 North
Range 4 East
Town of Minocqua
County of Oneida

O. C. COORDINATES

North: 235951.5087
East: 123163.0625
Control Station: O. C. 207 S
Latitude: 45° 49' 03.59887" N
Longitude: 89° 56' 30.36164" W
Datum: NAD - 83 (91)
Method: Direct RTK - GPS



SECTION 27

(b) HISTORY OF ORIGINAL CORNER ESTABLISHMENT

Original Surveyor:

Original B.T.'S

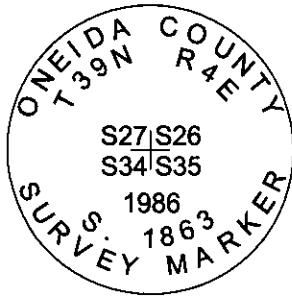
Date of Survey: Commenced
Completed

(f)(g)(h) DESCRIPTION OF MONUMENT FOUND AT THIS CORNER AND IF IT WAS ACCEPTED, STATE ALL EVIDENCE (MATERIAL, TESTIMONIAL, OCCUPATIONAL, PLATS, RECORDS, OTHER MONUMENTS) USED AS A BASIS FOR ESTABLISHING LOCATION. IF NOT ACCEPTED OF IF NOTHING WAS FOUND, STATE EVIDENCE USED AS BASIS FOR ESTABLISHING LOCATION. IF REESTABLISHED THROUGH LOST CORNER PROPORTIONATE METHODS, INDICATE ALL MONUMENTS, DISTANCES AND DIRECTIONS USED TO ESTABLISH. INDICATE TYPE OF MONUMENT AND SIGN POST FOUND OR SET.

This U.S. Public Land Survey Monument has been prepared for the purpose of referencing the corner position to the Oneida County Coordinate System using direct RTK - GPS methods.

(c)(d)(e) PLAN VIEW OF CORNER WITH TIES TO AT LEAST 4 WITNESS MONUMENTS. IF IN DISAGREEMENT WITH PREVIOUSLY ESTABLISHED CORNER, SHOW THE DISTANCE BETWEEN THE TWO CORNERS AND ALSO INDICATE THE TIES TO THE DISPUTED CORNER.

MAP # 12583
DATE FILED 04/22/2009
BY: JAB
DESCRIPTION
ONEIDA CO. SURVEYOR'S OFFICE



Recovered capped 2.4" o.d. aluminum monument extending 10" above ground level and 20 feet north of lakeshore as described in U.S. Public Land Survey Monument Record by Dennis B. Robers, RLS Dated April 22, 1987

(i) I, JAMES D. REIN, REGISTERED LAND SURVEYOR NO. S-12345 HEREBY CERTIFY THAT THE CORNER LOCATION ON THIS RECORD WAS DETERMINED BY ME OR UNDER MY DIRECTION AND CONTROL AND THAT THIS U.S. PUBLIC LAND SURVEY MONUMENT RECORD IS CORRECT AND COMPLETE TO THE BEST OF MY KNOWLEDGE AND BELIEF.

[Handwritten Signature]

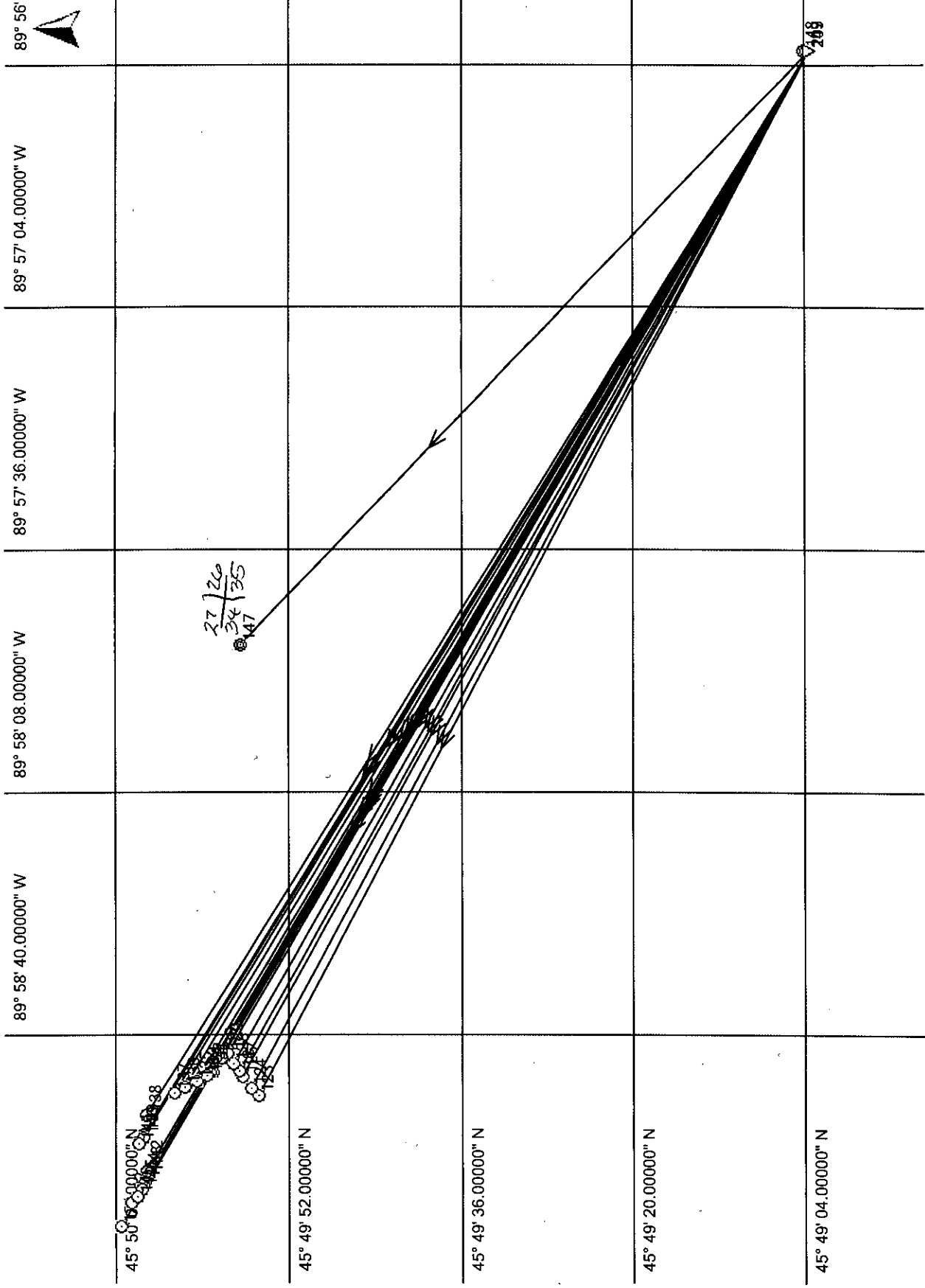
4/15/09

SIGNATURE

DATE

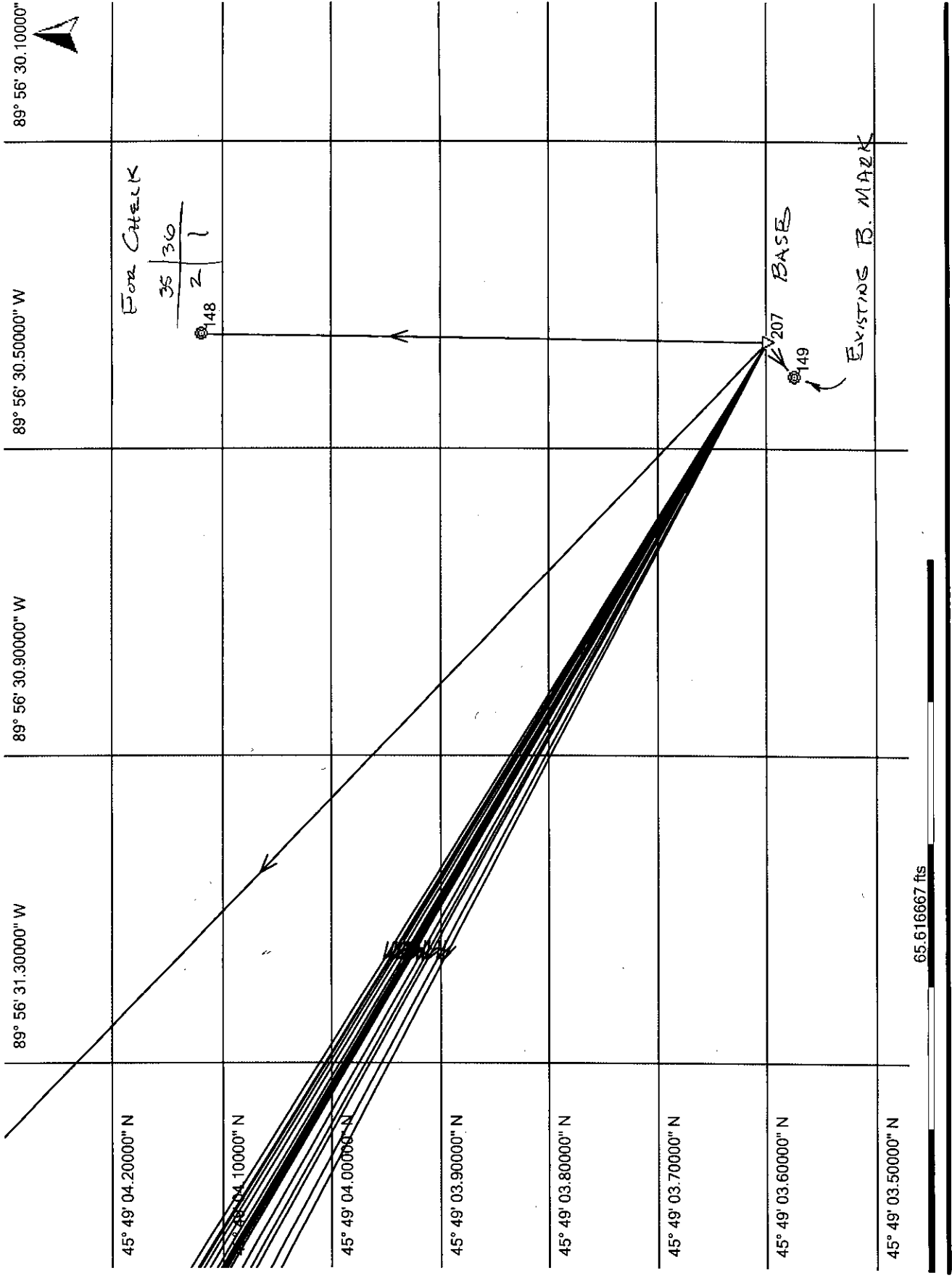


03-37gps



- + Estimated
- Navigated
- ⊗ SPP
- ⊙ Measured
- ⊕ Average
- ▽ Reference
- ⊗ Adjusted
- ⊙ Control - 1D
- ▲ Control - 2D
- ▲ Control - 3D

03-37gps



- + Estimated
- Navigated
- ⊗ SPP
- ⊙ Measured
- ⊕ Average
- ▽ Reference
- ⊕ Adjusted
- △ Control - 1D
- ▲ Control - 2D
- ▲ Control - 3D

Points of Project 03-37gps

Point Id	Point Class	Epoch	Latitude	Longitude	Posn. + Hgt. Qty
121	Measured	03/21/2003 12:00:55	45° 50' 07.61127" N	89° 59' 05.42797" W	0.0463
122	Measured	03/21/2003 12:02:17	45° 50' 06.70688" N	89° 59' 02.40851" W	0.1606
123	Measured	03/21/2003 12:36:16	45° 49' 54.86354" N	89° 58' 48.33885" W	0.0843
124	Measured	03/21/2003 12:38:09	45° 49' 55.59339" N	89° 58' 47.39820" W	0.0742
125	Measured	03/21/2003 12:40:14	45° 49' 56.38804" N	89° 58' 45.70941" W	0.0663
126	Measured	03/21/2003 12:40:28	45° 49' 56.38796" N	89° 58' 45.70847" W	0.0736
127	Measured	03/21/2003 12:43:00	45° 49' 56.70885" N	89° 58' 44.88617" W	0.0786
128	Measured	03/21/2003 12:44:43	45° 49' 57.26758" N	89° 58' 44.07509" W	0.0804
129	Measured	03/21/2003 12:46:07	45° 49' 57.73259" N	89° 58' 42.64571" W	0.0969
130	Measured	03/21/2003 12:48:49	45° 49' 58.32145" N	89° 58' 43.16086" W	0.1610
131	Measured	03/21/2003 13:24:54	45° 49' 59.17122" N	89° 58' 45.07486" W	0.0959
132	Measured	03/21/2003 13:32:34	45° 49' 59.40309" N	89° 58' 45.25029" W	0.1138
133	Measured	03/21/2003 13:34:31	45° 49' 59.98521" N	89° 58' 45.71483" W	0.0790
134	Measured	03/21/2003 13:40:15	45° 49' 59.73455" N	89° 58' 45.46378" W	0.0876
135	Measured	03/21/2003 13:43:38	45° 50' 00.70407" N	89° 58' 46.28109" W	0.0761
136	Measured	03/21/2003 13:46:18	45° 50' 01.74857" N	89° 58' 47.15572" W	0.0525
137	Measured	03/21/2003 13:49:12	45° 50' 02.70505" N	89° 58' 47.93280" W	0.0796
138	Measured	03/21/2003 14:41:27	45° 50' 05.27781" N	89° 58' 50.86134" W	0.0692
139	Measured	03/21/2003 14:48:51	45° 50' 05.56990" N	89° 58' 53.31266" W	0.1361
140	Measured	03/21/2003 14:49:53	45° 50' 05.58986" N	89° 58' 53.68505" W	0.0732
141	Measured	03/21/2003 14:51:06	45° 50' 05.95701" N	89° 58' 54.52531" W	0.0893
142	Measured	03/21/2003 14:58:30	45° 50' 05.11468" N	89° 58' 58.05838" W	0.0877
143	Measured	03/21/2003 15:00:16	45° 50' 05.11315" N	89° 58' 58.75268" W	0.0540
144	Measured	03/21/2003 15:00:59	45° 50' 05.43936" N	89° 58' 59.60920" W	0.0646
145	Measured	03/21/2003 15:01:47	45° 50' 05.66886" N	89° 59' 00.57863" W	0.0804
146	Measured	03/21/2003 15:02:40	45° 50' 06.11243" N	89° 59' 01.63205" W	0.0731
147	Averaged	03/22/2003 11:17:52	45° 49' 56.55966" N	89° 57' 48.71524" W	0.0217
148	Averaged	03/22/2003 11:17:52	45° 49' 04.11950" N	89° 56' 30.35042" W	0.0130
149	Averaged	03/22/2003 11:17:52	45° 49' 03.57541" N	89° 56' 30.40671" W	0.0145
207	Reference	03/21/2003 12:00:45	45° 49' 03.59888" N	89° 56' 30.36165" W	0.0000

27/26
34/35

FOR CHECK
35/36
2/1

 * Prepared by:
 * Routine: List Coordinates Coord File 03-37GPS.CRD 3/22/03 10:48:23
 * Input Scale Factor: 1.000000 Output Scale Factor: 1.000000

Pt.No.	Code	North	East	Elevation	Desc.
121		237100.19680	117737.00030	1619.07880	CL IXION RDS
122		237007.40700	117950.30060	1618.08500	CL TRAIL
123		235802.23320	118940.02940	1593.28050	CL TRAIL
124		235875.80430	119007.04170	1592.61130	CL RD
125		235955.65280	119127.06750	1593.01770	CL RD
126		235955.64410	119127.13390	1593.02240	CL RD
127		235987.83340	119185.53980	1592.24900	CL RD
128		236044.12130	119243.28100	1591.24510	CL RD
129		236090.67730	119344.75430	1590.44670	CL RD & PROP RD
130		236150.52680	119308.59900	1589.66040	CL PROP RD
131		236237.34320	119173.53290	1590.58410	CL PROP RD
132		236260.89920	119161.23790	1590.20520	CL PROP RD @ WL
EDGE					
133		236320.04660	119128.66300	1590.65300	CL PROP RD @ WL
EDGE					
134		236294.55820	119146.30230	1590.32390	PROPOSED CULVERT
135		236393.08500	119088.96170	1592.40130	CL PROP RD
136		236499.22860	119027.60320	1591.10020	CL PROP RD
137		236596.41950	118973.10510	1591.73110	CL PROP RD
138		236858.16900	118767.15460	1596.76740	CL PROP RD
139		236888.70480	118593.73970	1595.08460	CL PROP RD
140		236890.87050	118567.38240	1595.52970	CL PROP RD
141		236928.38770	118508.08740	1597.59390	CL PROP RD
142		236844.42850	118257.44560	1602.63610	CL PROP RD
143		236844.54190	118208.28180	1601.20920	CL PROP RD
144		236877.91980	118147.81360	1605.27830	CL TRAIL
145		236901.54470	118079.29590	1606.75580	CL TRAIL
146		236946.88770	118004.95040	1616.98370	CL TRAIL
147		235951.50870	123163.06250	1587.07930	COR SEC 27-26-34-35
(CAP 2"					
ALUM MON)					
148		230611.03580	128685.91260	1615.74960	COR SEC 35-36-37-38 CHECK
(BC 2" I.					
P.)					
149		230555.93970	128681.65170	1611.18040	B.M. (BC IN CONC
MON)					
207		230558.30100	128684.85520	1610.75370	

GPS Fieldbook Report



Job

Job Name: 03-37
Time: All results in local time (GPS + -6.00 hr)
RT-SKI Version: 3.2
Processing Kernel Version: 0.9

Coordinate System

Coord. System Name: ONEIDA
Transformation: ONEIDA
Type: Strict
Residuals: No distribution
Ellipsoid: ONEIDA
Projection: ONEIDA
Creation Date: 03/21/2003 10:58:02
Transformation model: Bursa-Wolf

System A:
Ellipsoid: WGS84
System B:
Ellipsoid: ONEIDA

Reference Site

Point Id: 207

WGS84 Coordinates:

X:	14849.149	fts	Latitude:	45 ° 49 ' 3.59888 "	N
Y:	-14610188.827	fts	Longitude:	89 ° 56 ' 30.36165 "	W
Z:	14932634.912	fts	Height:	1509.793	fts

Grid Coordinates:

Easting: 128684.8552 fts
Northing: 230558.3010 fts
Height: 1610.7537 fts

Height Reading: 4.395 fts
Antenna Offset: 1.181 fts

Baseline Results

Point Id: 121
Coordinate Quality: 0.046
Date/Time: 03/21/2003 11:00:55
Operation Type: Static

WGS84 Coordinates:

		r.m.s.	Baseline Components:				
Latitude:	45 ° 50 ' 7.61127 "	N	0.021	fts	dLatitude:	6481.5683	fts
Longitude:	89 ° 59 ' 5.42797 "	W	0.017	fts	dLongitude:	-10983.6921	fts
Ell. Height:	1518.5106	fts	0.037	fts	dHeight:	12.6002	fts

Slope Distance: 12753.5242 fts
Height Reading: 6.5617 fts
Layer: SURVEY
Code: 26
Code Description: TRAIL
Antenna Offset: 0.0000 fts

Point Id: 146
Coordinate Quality: 0.073

Date/Time: 03/21/2003 14:02:39
Operation Type: Static

WGS84 Coordinates: r.m.s. Baseline Components:

Latitude: 45 ° 50 ' 6.11243 " N 0.031 fts dLatitude: 6329.8770 fts
Longitude: 89 ° 59 ' 1.63205 " W 0.021 fts dLongitude: -10714.8190 fts
Ell. Height: 1516.4062 fts 0.063 fts dHeight: 10.3101 fts

Slope Distance: 12444.8702 fts 0.009 fts
Height Reading: 6.5617 fts Antenna Offset: 0.0000 fts
Layer: SURVEY
Code: 20
Code Description: CL

Point Id: 147
Coordinate Quality: 0.083

Date/Time: 03/21/2003 14:40:33
Operation Type: Static

WGS84 Coordinates: r.m.s. Baseline Components:

Latitude: 45 ° 49 ' 56.55929 " N 0.042 fts dLatitude: 5364.1939 fts
Longitude: 89 ° 57 ' 48.71557 " W 0.023 fts dLongitude: -5549.9829 fts
Ell. Height: 1486.3525 fts 0.068 fts dHeight: -22.0175 fts

Slope Distance: 7718.6379 fts 0.010 fts
Height Reading: 6.5617 fts Antenna Offset: 0.0000 fts
Layer: SURVEY
Code: 8
Code Description: PROP CORNER

Point Id: 147
Coordinate Quality: 0.073

Date/Time: 03/21/2003 14:41:08
Operation Type: Static

WGS84 Coordinates: r.m.s. Baseline Components:

Latitude: 45 ° 49 ' 56.55977 " N 0.037 fts dLatitude: 5364.2425 fts
Longitude: 89 ° 57 ' 48.71542 " W 0.020 fts dLongitude: -5549.9720 fts
Ell. Height: 1486.3603 fts 0.059 fts dHeight: -22.0096 fts

Slope Distance: 7718.6638 fts 0.009 fts
Height Reading: 6.5617 fts Antenna Offset: 0.0000 fts
Layer: SURVEY
Code: 8
Code Description: PROP CORNER

Point Id: 147
Coordinate Quality: 0.069

Date/Time: 03/21/2003 14:41:46
Operation Type: Static

WGS84 Coordinates: r.m.s. Baseline Components:

Latitude: 45 ° 49 ' 56.55990 " N 0.036 fts dLatitude: 5364.2551 fts
Longitude: 89 ° 57 ' 48.71494 " W 0.019 fts dLongitude: -5549.9378 fts
Ell. Height: 1486.3256 fts 0.055 fts dHeight: -22.0444 fts

Slope Distance: 7718.6481 fts 0.009 fts
Height Reading: 6.5617 fts Antenna Offset: 0.0000 fts
Layer: SURVEY
Code: 8
Code Description: PROP CORNER

Point Id: 147
Coordinate Quality: 0.076

Date/Time: 03/21/2003 14:42:41
Operation Type: Static

WGS84 Coordinates: r.m.s. Baseline Components:

Latitude: 45 ° 49 ' 56.55956 " N 0.040 fts dLatitude: 5364.2214 fts
Longitude: 89 ° 57 ' 48.71513 " W 0.021 fts dLongitude: -5549.9513 fts
Ell. Height: 1486.3918 fts 0.061 fts dHeight: -21.9781 fts

Slope Distance: 7718.6342 fts 0.010 fts
Height Reading: 6.5617 fts Antenna Offset: 0.0000 fts
Layer: SURVEY
Code: 8
Code Description: PROP CORNER

Point Id: 148
Coordinate Quality: 0.070

Date/Time: 03/21/2003 16:11:32
Operation Type: Static

WGS84 Coordinates: r.m.s. Baseline Components:

Latitude: 45 ° 49 ' 4.11956 " N 0.022 fts dLatitude: 52.7455 fts
Longitude: 89 ° 56 ' 30.35041 " W 0.016 fts dLongitude: 0.7965 fts
Ell. Height: 1514.7989 fts 0.065 fts dHeight: 5.0058 fts

Slope Distance: 52.9885 fts 0.007 fts
Height Reading: 6.5617 fts Antenna Offset: 0.0000 fts
Layer: SURVEY
Code: 6
Code Description: FOUND IP

Point Id: 148
Coordinate Quality: 0.072

Date/Time: 03/21/2003 16:12:29
Operation Type: Static

WGS84 Coordinates: r.m.s. Baseline Components:

Latitude: 45 ° 49 ' 4.11958 " N 0.023 fts dLatitude: 52.7479 fts
Longitude: 89 ° 56 ' 30.35035 " W 0.016 fts dLongitude: 0.8009 fts
Ell. Height: 1514.7655 fts 0.067 fts dHeight: 4.9724 fts

Slope Distance: 52.9878 fts 0.007 fts
Height Reading: 6.5617 fts Antenna Offset: 0.0000 fts
Layer: SURVEY
Code: 6
Code Description: FOUND IP

Point Id: 148
Coordinate Quality: 0.063

Date/Time: 03/21/2003 16:12:58
Operation Type: Static

WGS84 Coordinates: r.m.s. Baseline Components:

Latitude: 45 ° 49 ' 4.11939 " N 0.020 fts dLatitude: 52.7283 fts
Longitude: 89 ° 56 ' 30.35048 " W 0.014 fts dLongitude: 0.7913 fts
Ell. Height: 1514.8002 fts 0.058 fts dHeight: 5.0071 fts

Slope Distance: 52.9715 fts 0.006 fts
Height Reading: 6.5617 fts Antenna Offset: 0.0000 fts
Layer: SURVEY
Code: 6
Code Description: FOUND IP

Mean Coordinates And Differences

Point Id: 147

WGS84 Coordinates:

Latitude: 45 ° 49 ' 56.55966 " N
 Longitude: 89 ° 57 ' 48.71524 " W
 Ell. Height: 1486.3562 fts

Reference:	Date/Time:	dLat	dLon	dH
207	03/21/2003 14:40:33	0.0113	0.0072	0.0037
207	03/21/2003 14:41:08	-0.0035	0.0039	-0.0041
207	03/21/2003 14:41:46	-0.0074	-0.0066	0.0306
207	03/21/2003 14:42:41	0.0029	-0.0025	-0.0357

Point Id: 148

WGS84 Coordinates:

Latitude: 45 ° 49 ' 4.11950 " N
 Longitude: 89 ° 56 ' 30.35042 " W
 Ell. Height: 1514.7896 fts

Reference:	Date/Time:	dLat	dLon	dH
207	03/21/2003 16:11:32	-0.0019	-0.0002	-0.0093
207	03/21/2003 16:12:29	-0.0026	-0.0016	0.0240
207	03/21/2003 16:12:58	0.0034	0.0013	-0.0107

Point Id: 149

WGS84 Coordinates:

Latitude: 45 ° 49 ' 3.57541 " N
 Longitude: 89 ° 56 ' 30.40671 " W
 Ell. Height: 1510.2199 fts

Reference:	Date/Time:	dLat	dLon	dH
207	03/21/2003 16:13:55	-0.0047	0.0034	0.0062
207	03/21/2003 16:14:18	0.0053	-0.0028	0.0127
207	03/21/2003 16:14:36	0.0004	-0.0011	-0.0176