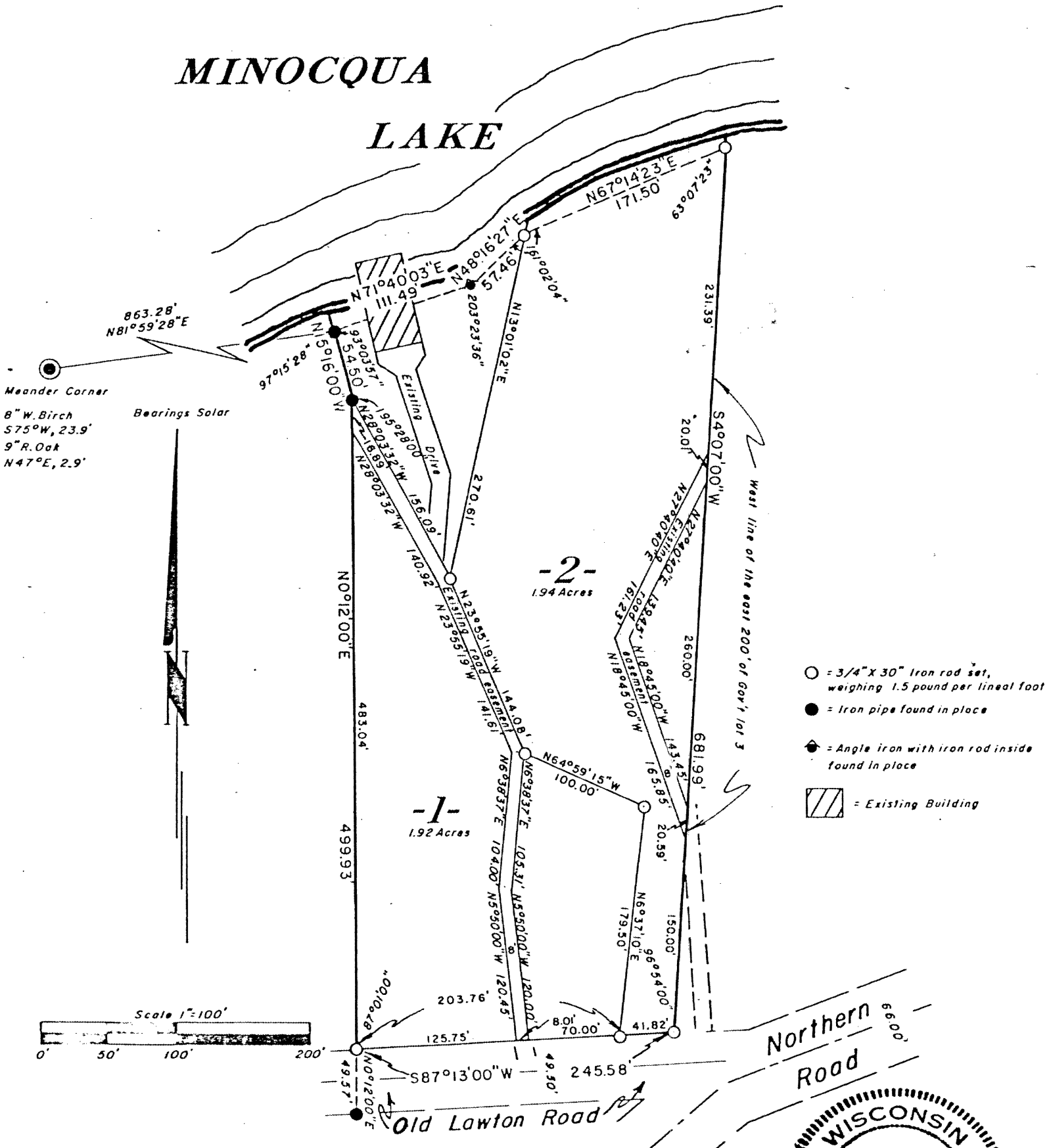


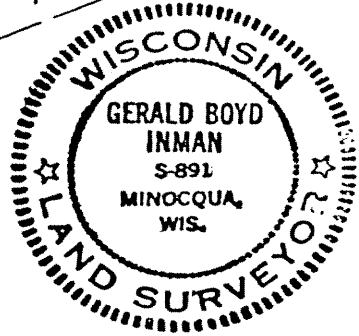
RECEIVED & FILED # **L2.6.3**
 Oneida County Surveyor's Office
FEB. 14 1988
 Date.....
 By *MJH*.....
 OCS Area #.....

MINOCQUA LAKE



Part of
Gov't Lot 3 Section 23
T39N, R6E
 Minocqua Township
 Oneida County, Wisconsin

Fisher, Inman, Foltz & Associates Inc.
 Minocqua, Wisconsin



Gerald B. Inman
 Registered Land Surveyor S-891

Dated 9/16/77