

MAP # **L2640**  
 DATE FILED **9-18-09**  
 BY *PLB*  
 DESCRIPTION FILED  
 ONEIDA CO. SURVEYOR'S OFFICE

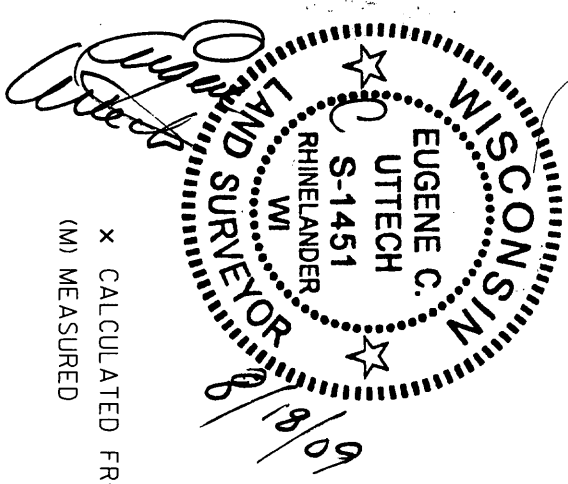


**TRANSPORTATION • MUNICIPAL  
 DEVELOPMENT • ENVIRONMENTAL**  
 1835 N. Stevens St. Rhineland, WI 54501  
 715-362-3244 1-800-844-7854 Fax: 715-362-4116  
 Web Address: www.msa-ps.com  
 © MSA PROFESSIONAL SERVICES

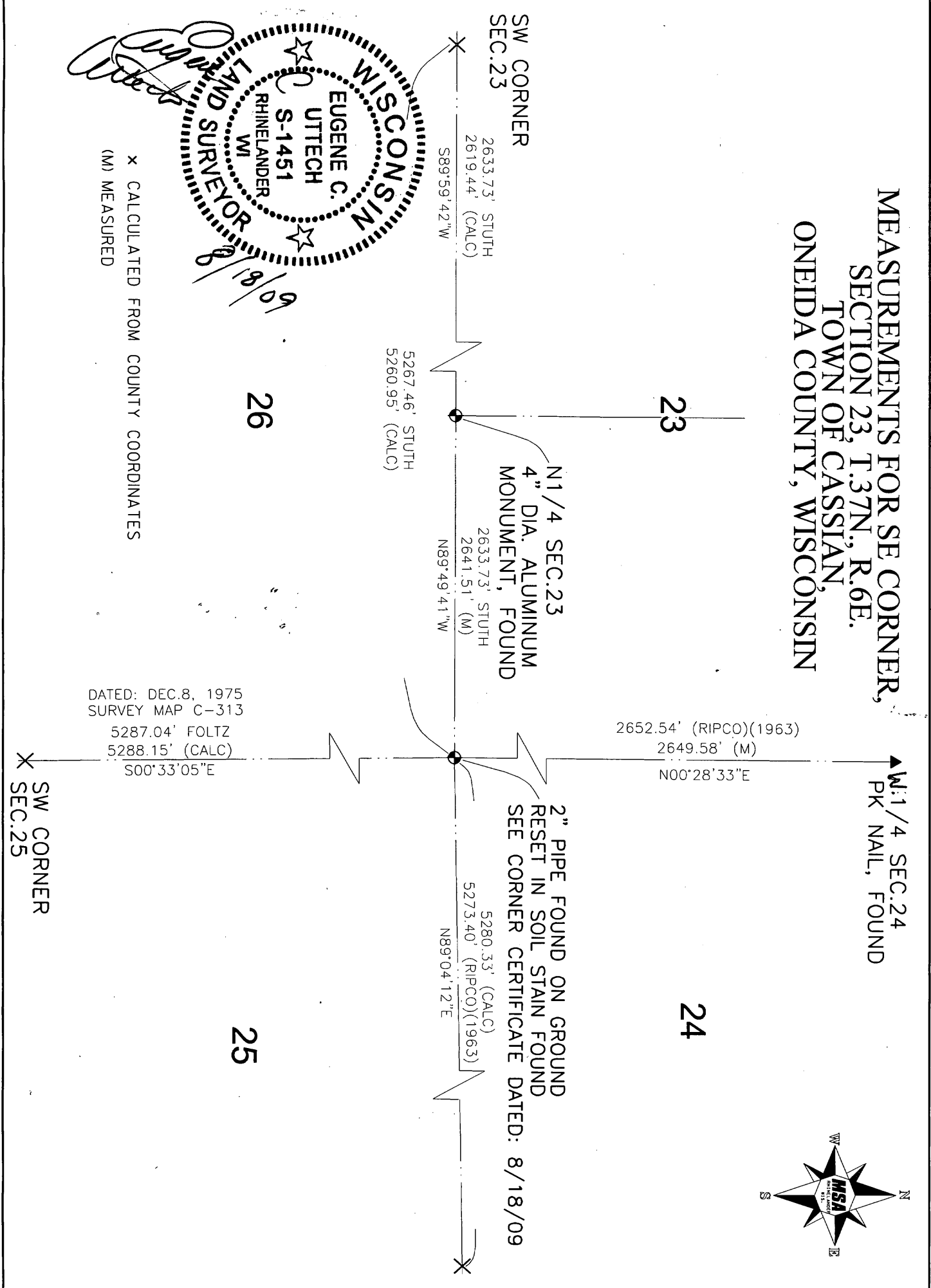
PROJECT NO. 10697001
DRAWN BY: SJZ
CHECKED BY: ECU
FILE: 10600'S/10690'S/10697001/CADD/SECTION.DGN
SHEET NO. 1 OF 1

**SECTION SUMMARY SHEET**

MEASUREMENTS FOR SE CORNER,  
 SECTION 23, T.37N., R.6E.  
 TOWN OF CASSIAN,  
 ONEIDA COUNTY, WISCONSIN



X CALCULATED FROM COUNTY COORDINATES  
 (M) MEASURED



DATED: DEC. 8, 1975  
 SURVEY MAP C-313  
 5287.04' FOLTZ  
 5288.15' (CALC)  
 S00°33'05"E

2" PIPE FOUND ON GROUND  
 RESET IN SOIL STAIN FOUND  
 SEE CORNER CERTIFICATE DATED: 8/18/09

