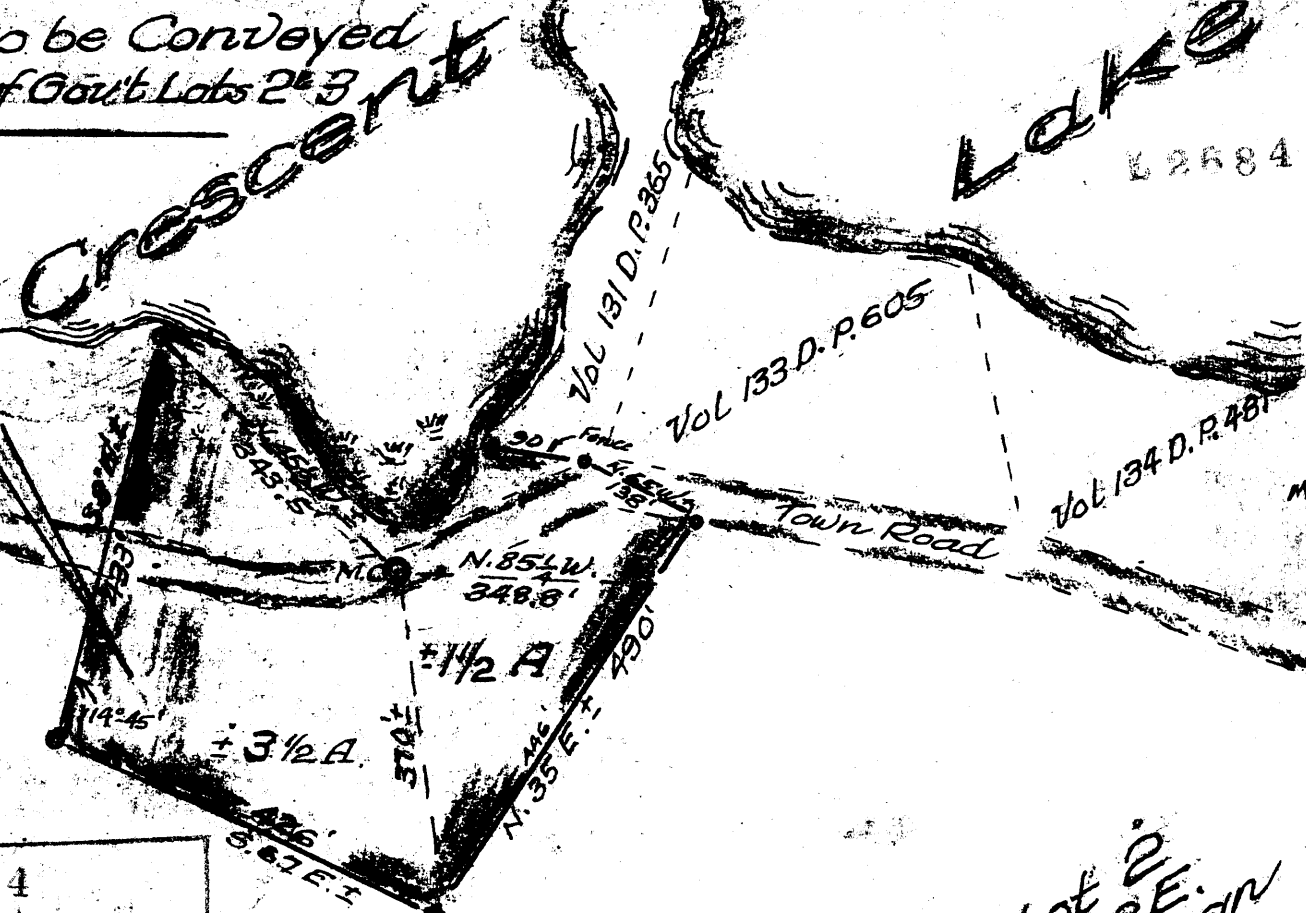


Parcel to be Conveyed
is Portions of Gov't Lots 2 & 3



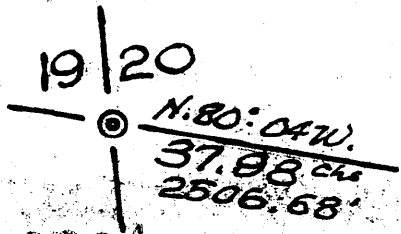
MAP # 12684
 DATE 3/1/10
 BY L.H.
 DESG.
 ONEIDA CO. SURVEYOR'S OFFICE

Portion of Gov't Lot 3
 Section 20 T. 36 N. R. 8 E.
 Oneida County, Wisconsin

Portion of Gov't Lot 2
 Section 20 T. 36 N. R. 8 E.
 Oneida County, Wisconsin



Scale 1" = 200'



M

V. M. Mauro, C.E. Sur.
 Rhinelander, Wis.
 July 31, 1954

12684

12684