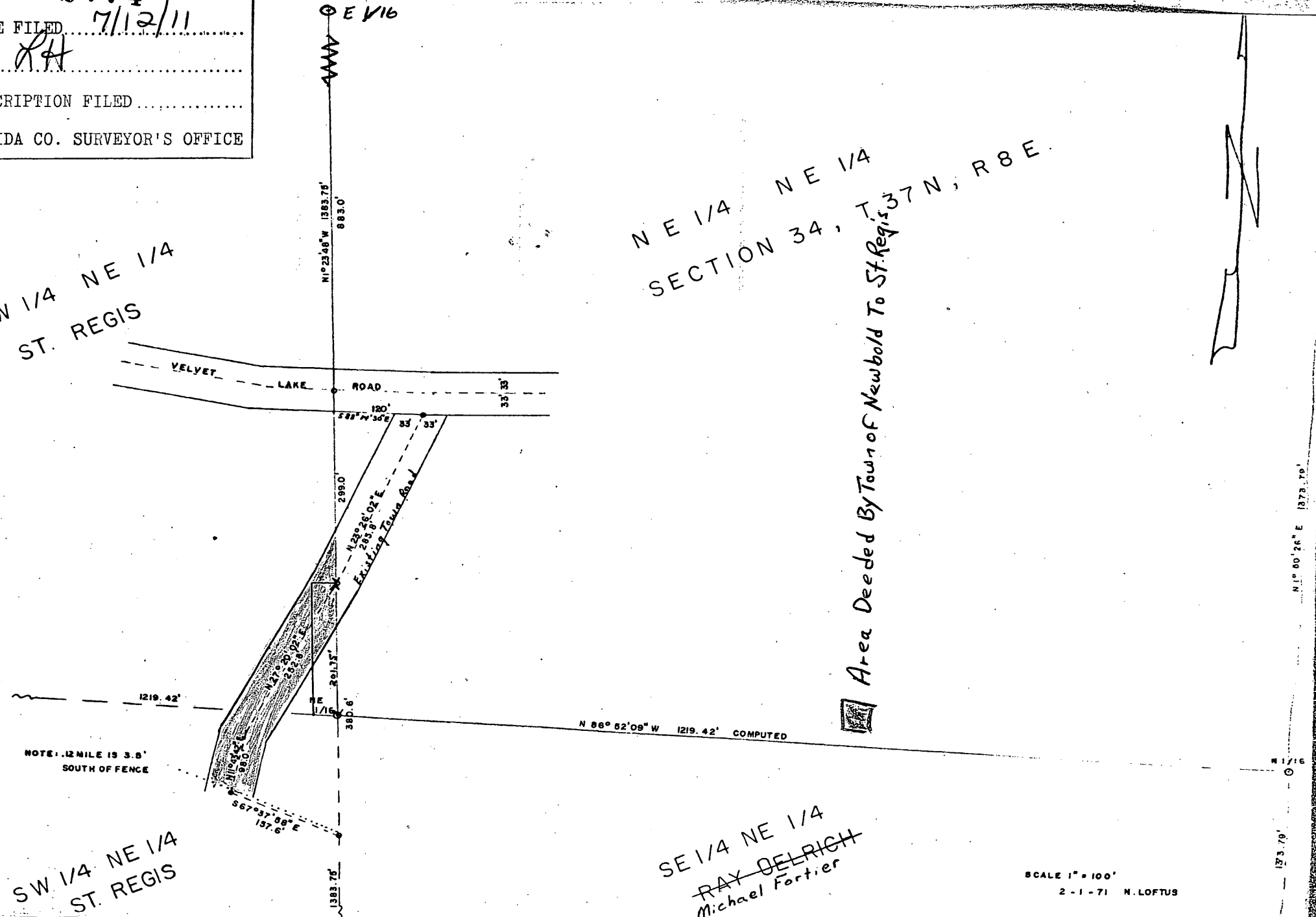


MAP # **L2774**  
 DATE FILED 7/12/11  
 BY RH  
 DESCRIPTION FILED.....  
 ONEIDA CO. SURVEYOR'S OFFICE

NW 1/4 NE 1/4  
 ST. REGIS

NE 1/4 NE 1/4  
 SECTION 34, T.37N, R8E



Area Deeded By Town of Newbold To St. Regis

SW 1/4 NE 1/4  
 ST. REGIS

SE 1/4 NE 1/4  
 RAY DELRICH  
 Michael Fortier

SCALE 1" = 100'  
 2 - 1 - 71 N. LOFTUS

VOL 333 PAGE 388

L2774