

McGrath L.
 M.C. Sec 8
 Sec 17

Big Carr L.

MAP # L 2793
 DATE FILED 8/22/11
 BY JH
 DESCRIPTION FILED
 ONEIDA CO. SURVEYOR'S OFFICE

Courses for $\frac{1}{4}$ of 20' wide easement
 Overhead

- R - S = N27° 54' E 206.8'
- T - U = N26° 54' W 161.1'
- U - V = N16° 01' W 290.6'
- V - W = N8° 52' W 381.3'
- W - X = N1° 38' W 384.3'

Underground

- I - J = N49° 18' E 642.4'
- J - K = N49° 18' E 292.9'
- K - L = N58° 12' E 1314.6'
- L - M = N71° 44' E 285.1'
- M - N = N53° 32' E 78.8'
- N - O = N33° 03' E 106.5'
- O - P = N49° 53' E 128.4'
- P - Q = N46° 17' E 161.9'
- Q - R = N18° 52' W 85.0'

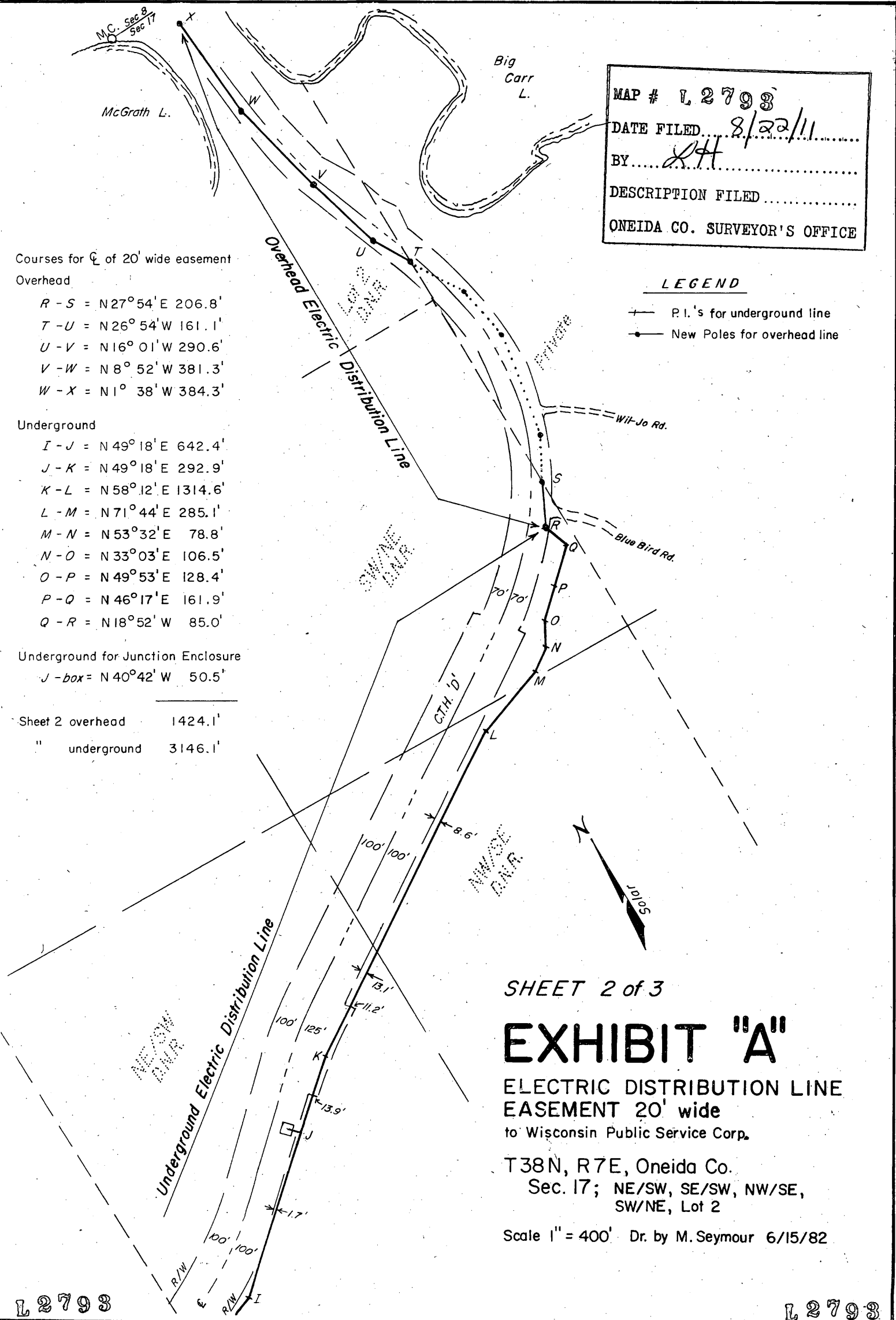
Underground for Junction Enclosure

- J - box = N40° 42' W 50.5'

Sheet 2 overhead	1424.1'
" underground	3146.1'

LEGEND

- P.I.'s for underground line
- New Poles for overhead line



SHEET 2 of 3

EXHIBIT "A"

ELECTRIC DISTRIBUTION LINE
 EASEMENT 20' wide
 to Wisconsin Public Service Corp.

T38N, R7E, Oneida Co.
 Sec. 17; NE/SW, SE/SW, NW/SE,
 SW/NE, Lot 2

Scale 1" = 400' Dr. by M. Seymour 6/15/82

L 2793

L 2793