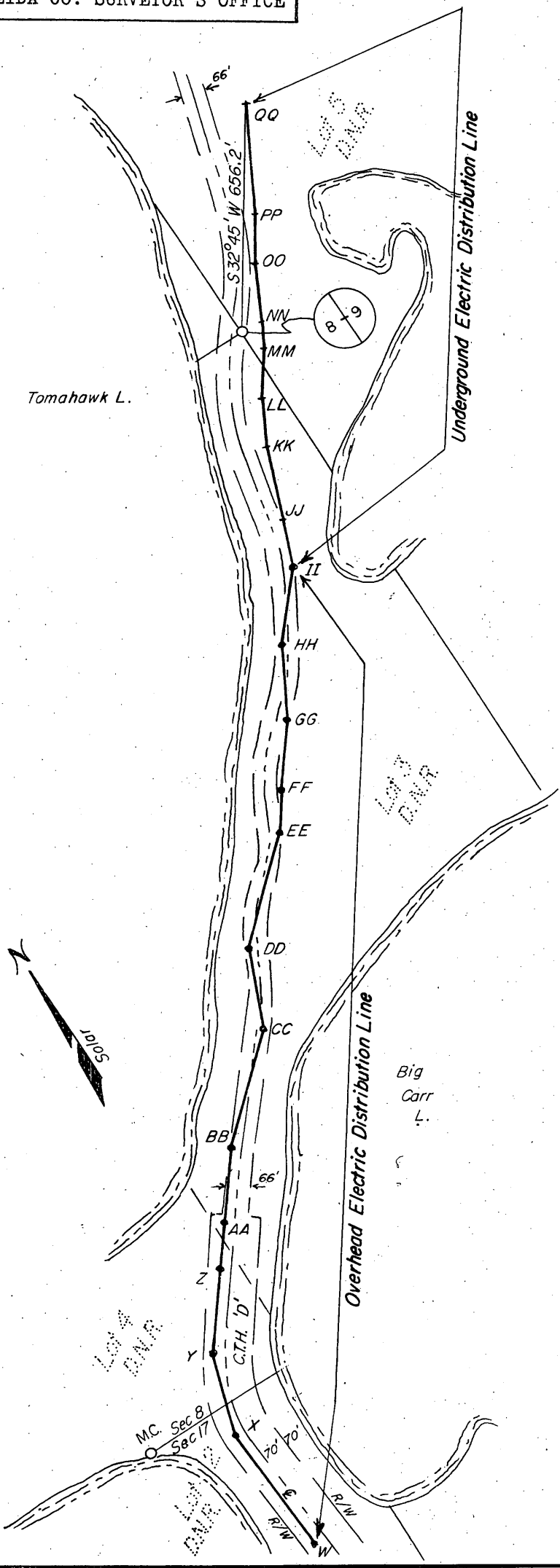


MAP # **L2794**
 DATE FILED 8/22/11
 BY RA
 DESCRIPTION FILED
 ONEIDA CO. SURVEYOR'S OFFICE

L2794



Courses for $\frac{1}{2}$ of 20' wide easement

Underground

- II - JJ = N 20° 56' E 139.4'
- JJ - KK = N 18° 36' E 204.0'
- KK - LL = N 29° 01' E 140.8'
- LL - MM = N 36° 24' E 142.5'
- MM - NN = N 23° 58' E 81.0'
- NN - OO = N 26° 52' E 165.2'
- OO - PP = N 34° 43' E 145.8'
- PP - QQ = N 28° 34' E 319.1'

Overhead

- X - Y = N 19° 10' E 241.3'
- Y - Z = N 37° 51' E 242.5'
- Z - AA = N 37° 31' E 134.6'
- AA - BB = N 38° 01' E 221.0'
- BB - CC = N 47° 19' E 357.8'
- CC - DD = N 21° 34' E 240.2'
- DD - EE = N 48° 56' E 341.6'
- EE - FF = N 38° 00' E 154.5'
- FF - GG = N 37° 45' E 174.5'
- GG - HH = N 27° 52' E 194.4'
- HH - II = N 42° 25' E 262.1'

Sheet 3 underground	1337.8'
" overhead	2564.5'

LEGEND

- + P.I.'s for underground line
- ◆ New Poles for overhead line

SHEET 3 of 3

EXHIBIT "A"

ELECTRIC DISTRIBUTION LINE
 EASEMENT 20' wide
 to Wisconsin Public Service Corp.

T 38 N, R 7 E, Oneida Co.
 Sec. 8 ; Lot 3, Lot 4
 Sec. 9 ; Lot 5
 Sec. 17 ; Lot 2

Scale 1" = 400' Dr. by M. Seymour 6/15/82