

L 2807

MAP #
DATE FILED 8/22/11
BY RH
DESCRIPTION FILED
ONEIDA CO. SURVEYOR'S OFFICE

L 2807

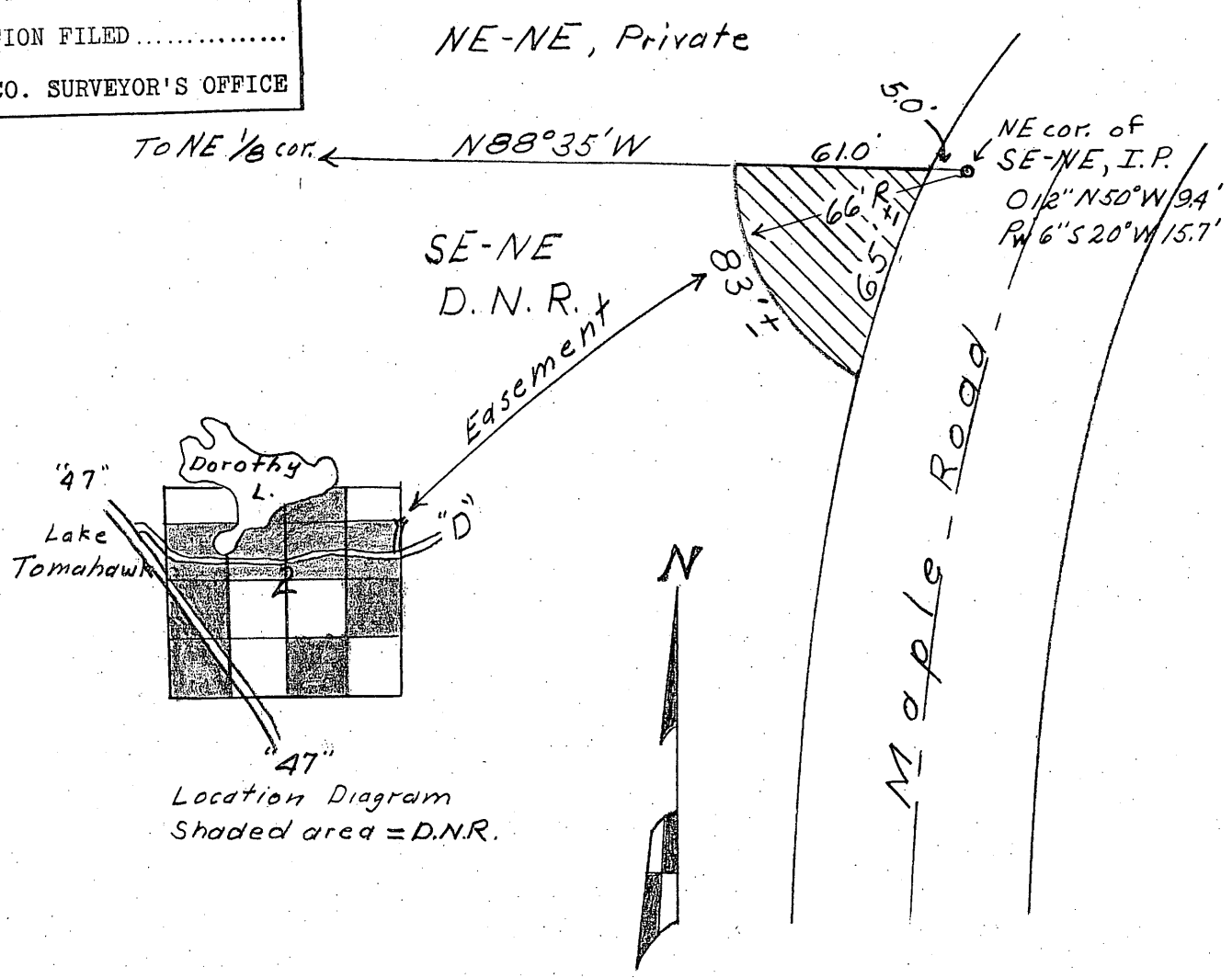


EXHIBIT "A"

Road Easement to the
Town of Lake Tomahawk in
T 38 N, R 7 E, Oneida Co. Wis.
Sec. 2, SE-NE

Scale 1 in. = 50 ft. July 19, 1973

 - Easement

L 2807

L 2807

E.H.C.

2-38-1