

MAP # L 2812
 DATE FILED 8/22/11
 BY L.H.
 DESCRIPTION FILED
 ONEIDA CO. SURVEYOR'S OFFICE

Courses for $\frac{1}{2}$ of 20' wide easement

- A-B = N64°28'E 15.9'
- B-C = N79°17'E 259.7'
- C-D = N69°14'E 893.0'
- D-E = N68°01'E 406.0'
- E-F = N68°01'E 70.5'
- F-G = N68°54'E 511.9'
- G-H = N68°47'E 650.3'
- H-I = N68°26'E 534.7'

Course for Junction Enclosure (20' wide easement)

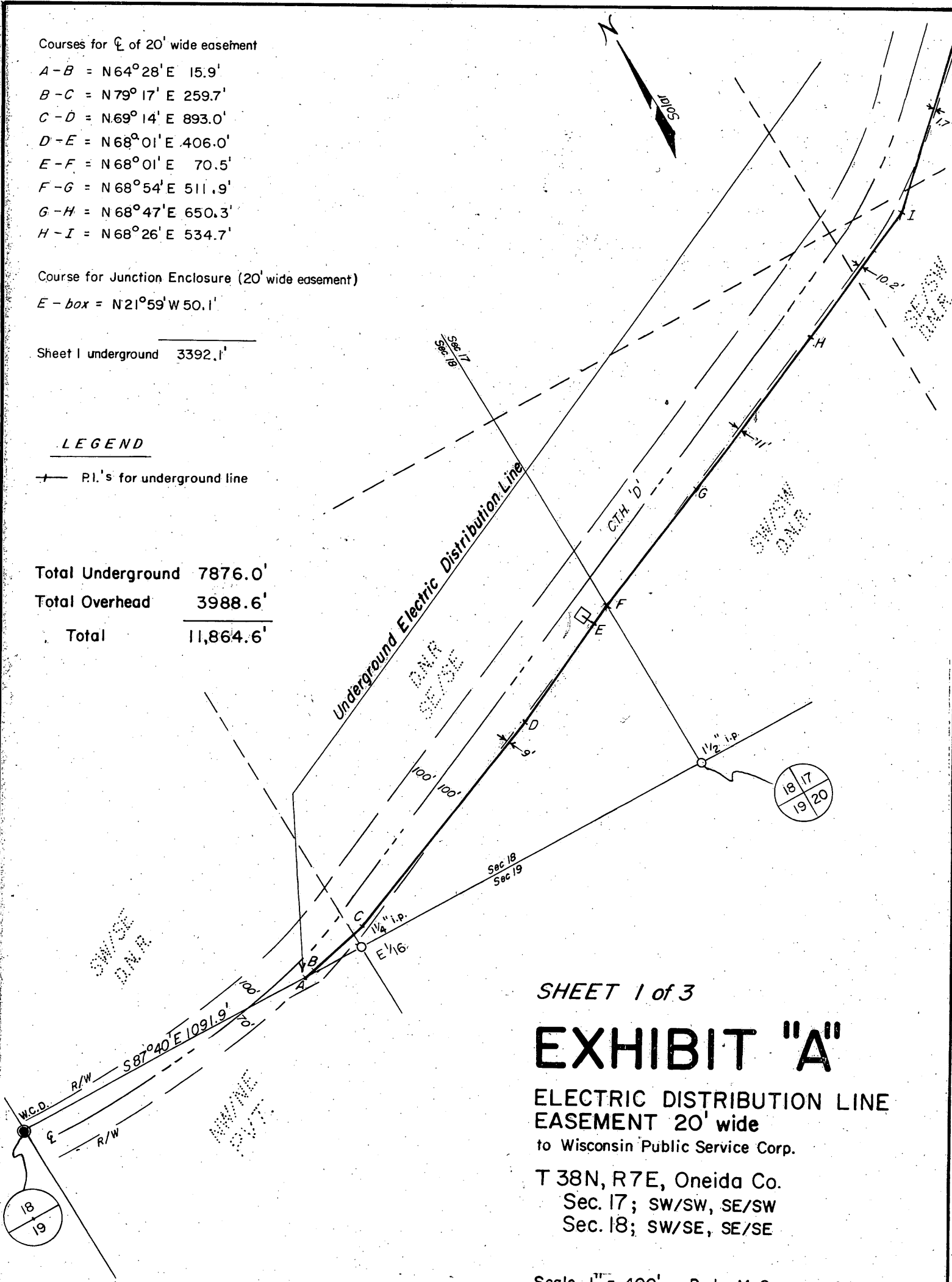
E - box = N21°59'W 50.1'

Sheet I underground 3392.1'

LEGEND

— P.I.'s for underground line

Total Underground	7876.0'
Total Overhead	3988.6'
Total	11,864.6'



SHEET 1 of 3

EXHIBIT "A"

**ELECTRIC DISTRIBUTION LINE
 EASEMENT 20' wide**
 to Wisconsin Public Service Corp.

T 38N, R7E, Oneida Co.
 Sec. 17; SW/SW, SE/SW
 Sec. 18; SW/SE, SE/SE

Scale 1" = 400' Dr. by M. Seymour 6/15/82