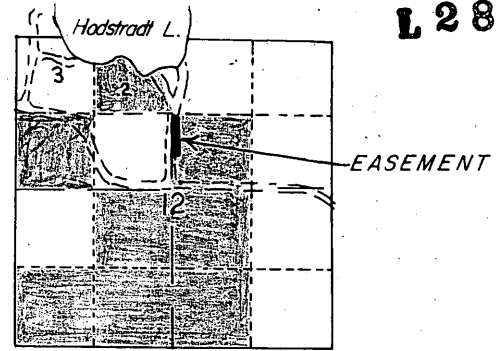


L 2817

L 2817

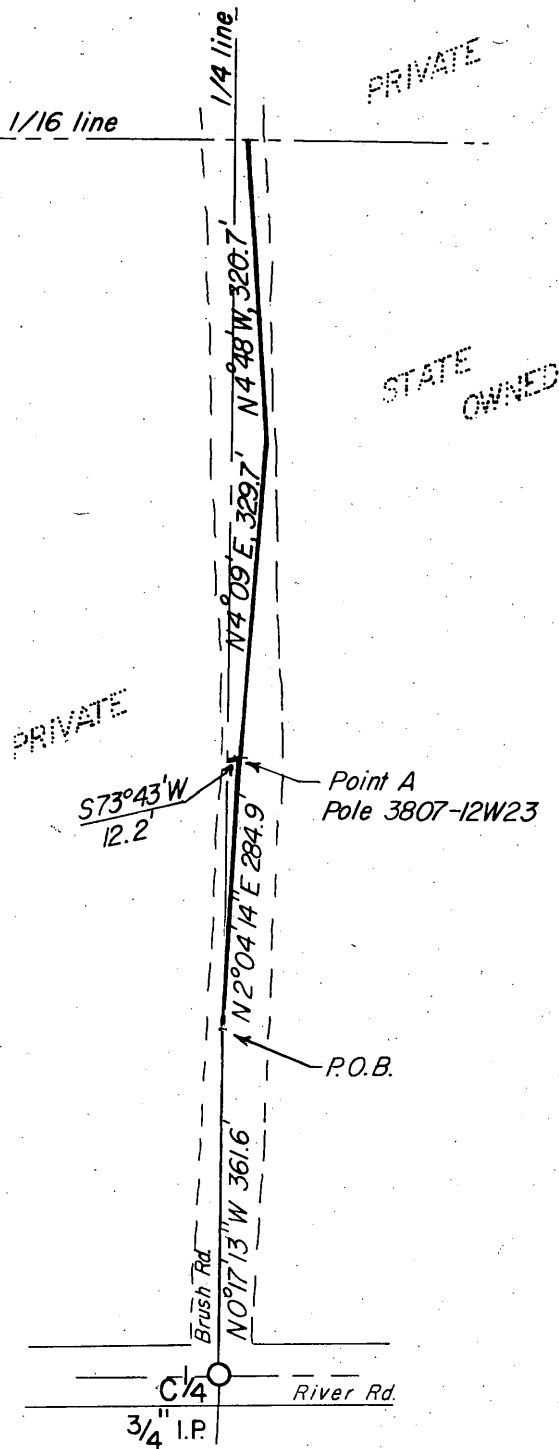


LOCATION DIAGRAM

State owned



Bearings based on County Plat of "Hodstradt Off Water"



MAP # **L 2817**
 DATE FILED 8/22/11
 BY [Signature]
 DESCRIPTION FILED
 ONEIDA CO. SURVEYOR'S OFFICE

EXHIBIT "A"

Overhead Electric Easement

20' wide to
Wisconsin Public Service Corporation

T 38N, R 7E, ONEIDA CO.
SEC. 12; SW/NE

Scale 1" = 200' MES 3-4-77

Information from map by Elton Petersen S-1304, 9/22/76

L 2817

12, 38-7