

L2819

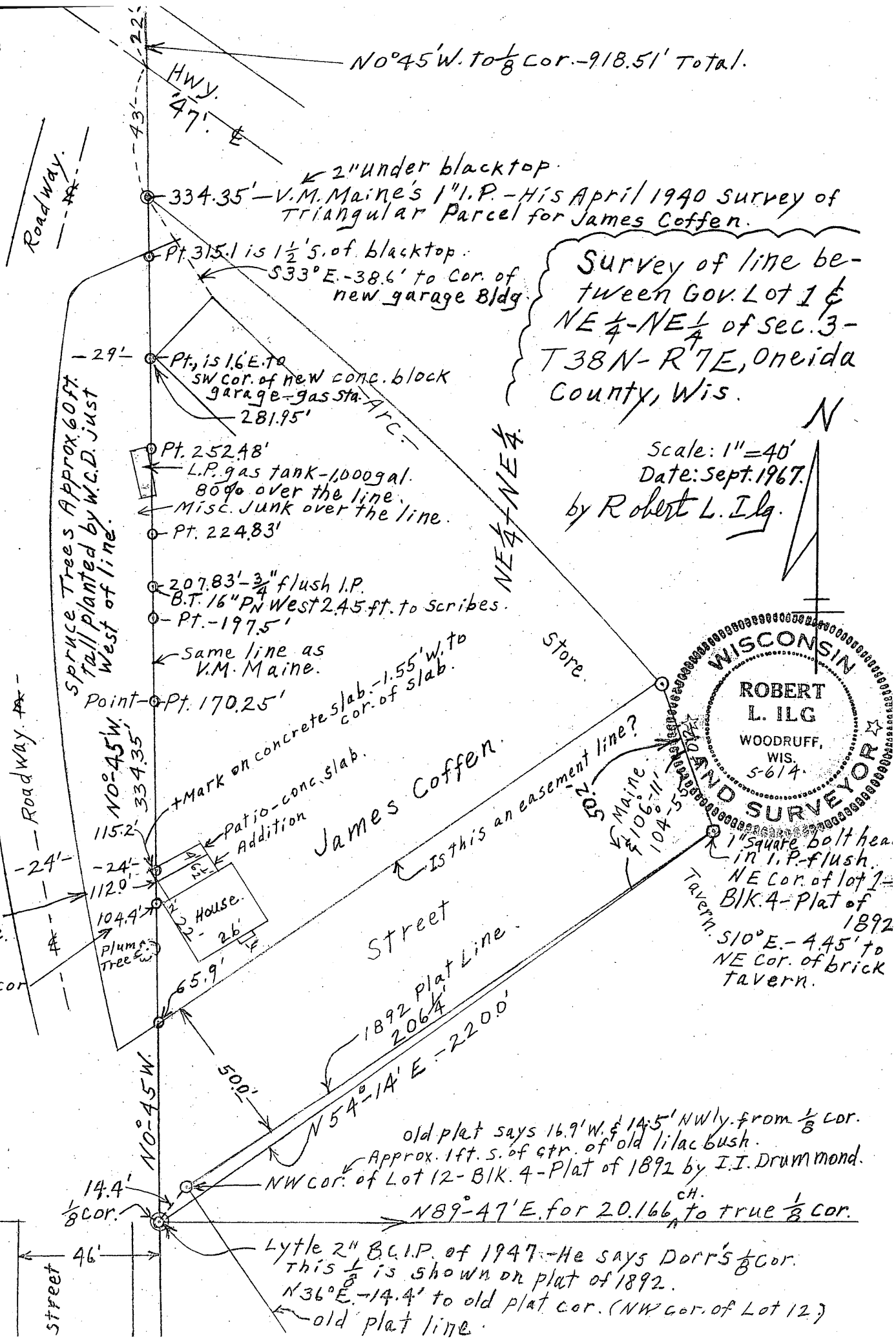
No 45' W. to 1/8 Cor. - 918.51' Total.

W.C.D. Ranger Station.
Gov. Lot 1.

9 inches E. to Cor. of House. (Eave over).
2 1/2' E. to NW cor. of House.

choate Street

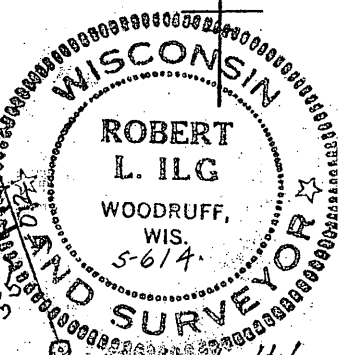
L2819



2" under blacktop.
V.M. Maine's 1" I.P. - His April 1940 survey of triangular Parcel for James Coffen.

Survey of line between Gov. Lot 1 & NE 1/4 - NE 1/4 of sec. 3 - T38N - R7E, Oneida County, Wis.

Scale: 1" = 40'
Date: Sept. 1967.
by Robert L. Ilg.



1" square bolt head in I.P. flush. NE Cor. of lot 1 - BIK. 4 - Plat of 1892. S10° E. - 4.45' to NE Cor. of brick Tavern.

James Coffen.

Street

1892 Plat Line.

N54°-14' E - 220.0'

old plat says 16.9' W. & 14.5' NWly. from 1/8 Cor. Approx. 1ft. S. of ctr. of old lilac bush. NW Cor. of Lot 12 - BIK. 4 - Plat of 1892 by I.I. Drummond. N89°-47' E. for 20.166 to true 1/8 Cor.

Lytle 2" B.C.I.P. of 1947 - He says Dorr's 1/8 Cor. this 1/8 is shown on plat of 1892. N36° E. - 14.4' to old plat cor. (NW cor. of Lot 12) old plat line.