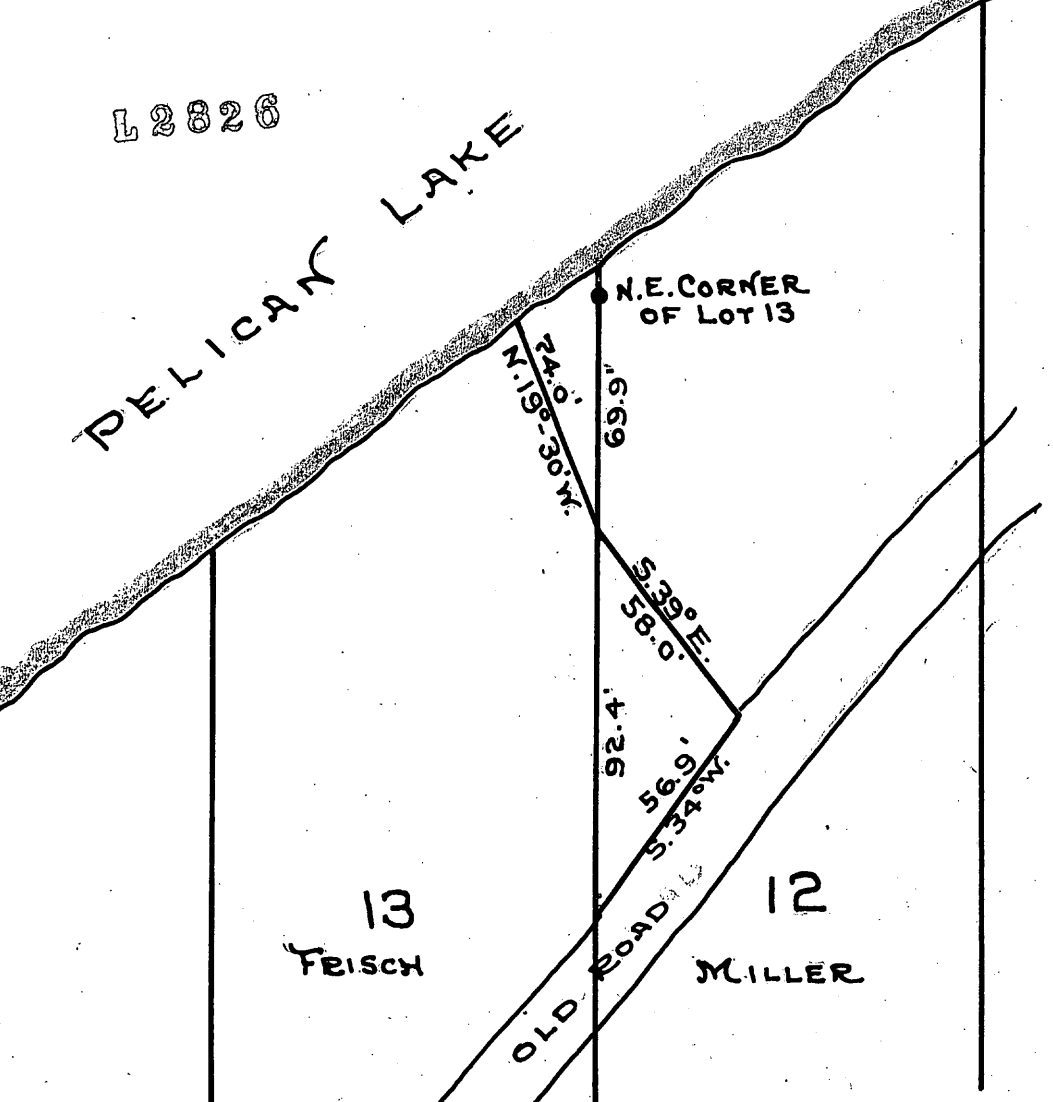
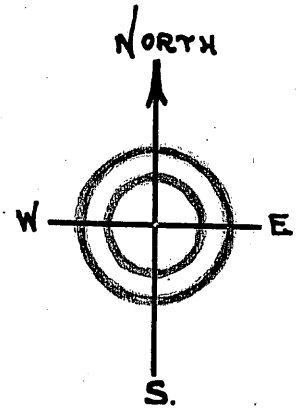


L2826

L2826

PELICAN LAKE



N.E. CORNER OF LOT 13

N. 19°-30' W. 74.0'

69.9'

S. 39° E. 58.0'

92.4'

S. 34° W. 56.9'

13
FRISCH

12
MILLER

OLD ROAD

FRISCH TO MILLER

A PART OF LOT 13, PELICAN SOUTH SHORE RESORTS DESCRIBED AS FOLLOWS:- STARTING AT THE NORTHEAST OF SAID LOT 13, THENCE SOUTH ON THE LINE BETWEEN LOTS 12 AND 13, 69.9 FEET, THENCE N. 19°-30' W. 74.0 FEET TO THE SHORE OF PELICAN LAKE, THENCE NORTHEASTERLY ALONG THE SHORE OF PELICAN LAKE TO THE INTERSECTION OF THE LINE BETWEEN LOTS 12 AND 13 WITH THE SHORE OF SAID LAKE, THENCE SOUTH ON THE LINE BETWEEN LOTS 12 AND 13 TO PLACE OF BEGINNING.

MILLER TO FRISCH

A PART OF LOT 12 PELICAN SOUTH SHORE RESORTS DESCRIBED AS FOLLOWS:- STARTING AT A POINT ON THE LINE BETWEEN LOTS 12 AND 13, 69.9 FEET SOUTH OF THE NORTHEAST CORNER OF LOT 13, THENCE S. 39° E. 58.0 FEET, THENCE S. 34° W. 56.9 FEET, TO THE LINE BETWEEN LOTS 12 AND 13, THENCE NORTH ON THE LINE BETWEEN LOTS 12 AND 13, 92.4 FEET TO PLACE OF BEGINNING.

MAP # L2826
DATE FILED... 9/16/11
BY... [Signature]
DESCRIPTION FILED
ONEIDA CO. SURVEYOR'S OFFICE

L2826