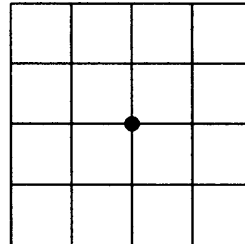


U.S. PUBLIC LAND SURVEY MONUMENT RECORD

Note: This form is intended and designed to fulfill all requirements of the Wisconsin Administrative Code, Chapter A-E 7.08 U.S. Public Land Monument Record (3)(a)(b)(c)(d)(e)(f)(g)(h)(i). An additional sheet may be added if necessary to conform with said requirements.

(a) CORNER LOCATION: Oneida County Corner I.D. No.:

Center 1/4 Corner, Sec. 26 3710262020
Township 37 North
Range 10 East
Town of Stella
County of Oneida



SECTION 26

(f)(g)(h) DESCRIPTION OF MONUMENT FOUND AT THIS CORNER AND IF IT WAS ACCEPTED, STATE ALL EVIDENCE (MATERIAL, TESTIMONIAL, OCCUPATIONS, PLATS, RECORDS, OTHER MONUMENTS) USED AS A BASIS FOR ESTABLISHING LOCATION. IF NOT ACCEPTED OF IF NOTHING WAS FOUND, STATE EVIDENCE USED AS BASIS FOR ESTABLISHING LOCATION. IF REESTABLISHED THROUGH LOST CORNER PROPORTIONATE METHODS, INDICATE ALL MONUMENTS, DISTANCES AND DIRECTIONS USED TO ESTABLISH. INDICATE TYPE OF MONUMENT AND SIGN POST FOUND OR SET.

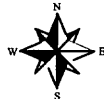
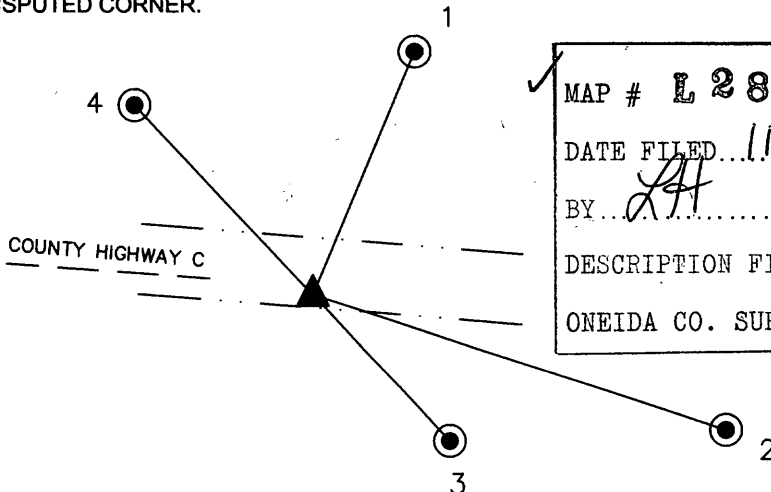
MAY 29, 2011 - CENTER 1/4 SECTION BY ROHDE APPEARS TO HAVE BEEN OBLITERATED DURING VERY RECENT CONSTRUCTION WORK ON CULVERT UNDER THE HIGHWAY. WITNESS CORNERS 2, 3 AND 6, AS SHOWN ON HIS MONUMENT RECORD ARE IN GOOD CONDITION. WITNESS CORNER 1 WAS FOUND, IN ITS ENTIRETY, LYING ON THE GROUND, BROKEN IN HALF. PK NAIL 4 WAS OBLITERATED DURING CULVERT WORK AND PK NAIL 5 WAS FOUND BENT AND NEARLY OUT OF THE BLACKTOP. SEE PRE-CONSTRUCTION REPORT BY A.R. JONES. SEE PREVIOUS MONUMENT RECORDS FOR INFORMATION.

NOVEMBER 8, 2011 - A.R. JONES SET PK NAIL AT LOCATION OF RECORD DISTANCES FROM WITNESS CORNERS 3 AND 6 FROM RODHE TIE SHEET. ADDED FOURTH WITNESS CORNER AS SHOWN BELOW. NOTE: PRE-CONSTRUCTION REPORT BY A.R. JONES HAS A TYPOGRAPHIC ERROR SHOWING AN INCORRECT DISTANCE BETWEEN WITNESS CORNERS 6 AND 3 AND IS CORRECTED BELOW AS WITNESS CORNERS 3 AND 4.

(c)(d)(e) PLAN VIEW OF CORNER WITH TIES TO AT LEAST 4 WITNESS MONUMENTS. IF IN DISAGREEMENT WITH PREVIOUSLY ESTABLISHED CORNER, SHOW THE DISTANCE BETWEEN THE TWO CORNERS AND ALSO INDICATE THE TIES TO THE DISPUTED CORNER.

WITNESS MONUMENT TIES:

- 1: SET 30" ALUMINUM ONEIDA COUNTY MONUMENT
N 22°46'13" E, 82.37'
- 2: FOUND ALUMINUM MON. IN CONCRETE
S 71°57'58" E, 135.96' (135.88')
- 3: FOUND ALUMINUM MON. IN CONCRETE
S 43°15'00" E, 62.54'
- 4: FOUND ALUMINUM MON. IN CONCRETE
N 43°15'00" E, 81.24'

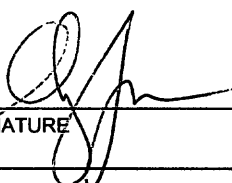


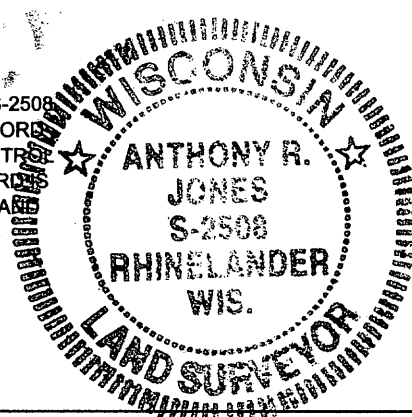
Scale: 1"=60'

BEARINGS BASED ON MEASURED LINE BETWEEN WITNESS CORNERS 3 AND 4

MAP # L 2848
DATE FILED 11/11/11
BY J.A.
DESCRIPTION FILED
ONEIDA CO. SURVEYOR'S OFFICE

(i) I, ANTHONY R. JONES, REGISTERED LAND SURVEYOR NO. S-2508 HEREBY CERTIFY THAT THE CORNER LOCATION ON THIS RECORD WAS DETERMINED BY ME OR UNDER MY DIRECTION AND CONTROL AND THAT THIS U.S. PUBLIC LAND SURVEY MONUMENT RECORD IS CORRECT AND COMPLETE TO THE BEST OF MY KNOWLEDGE AND BELIEF.

SIGNATURE  DATE 11/8/11



INDEX NO. T 19

3710262020