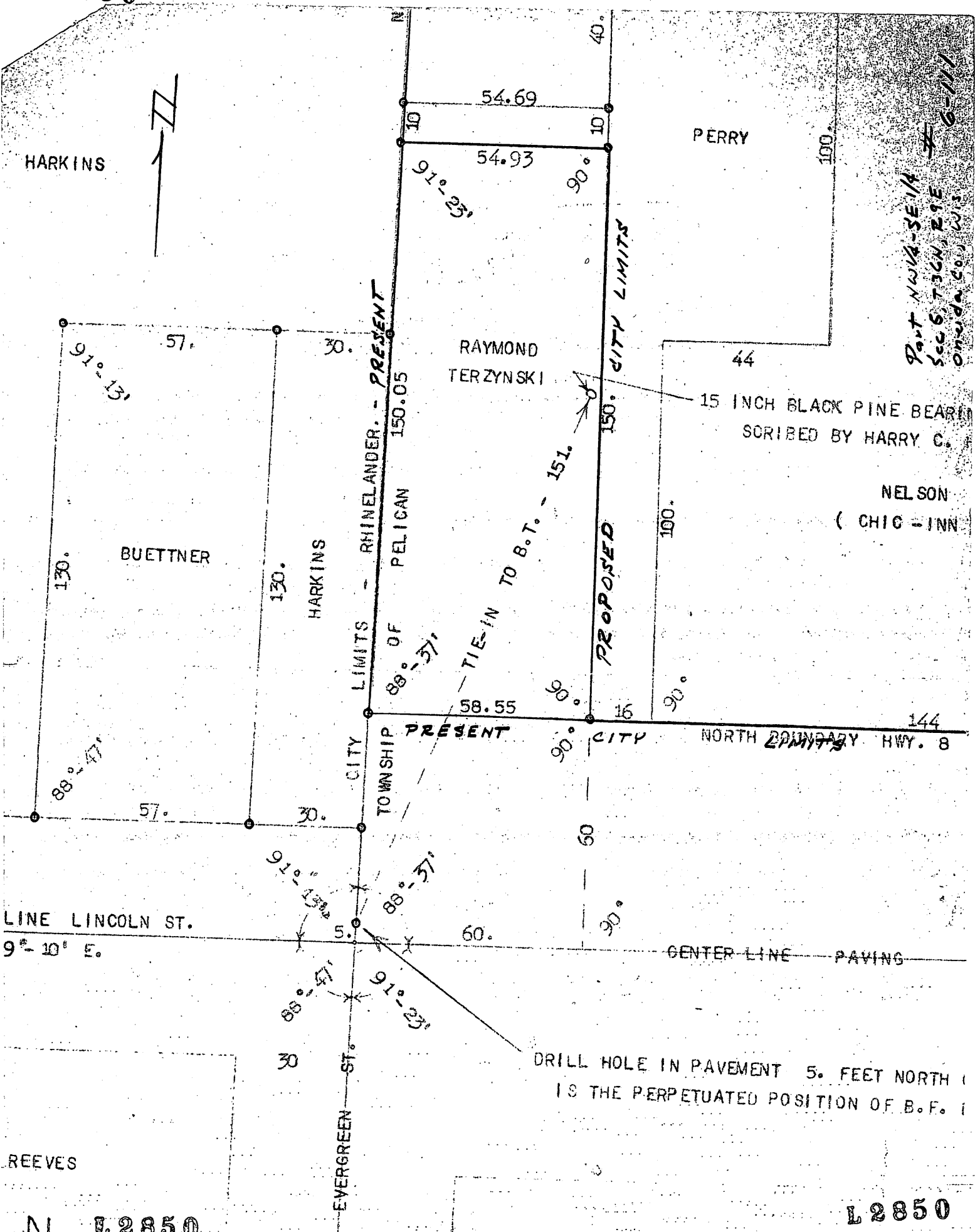


L2850

L2850



HARKINS



PERRY

Part NW1/4-SE1/4  
 Sec 6, T36N, R9E  
 Onoda Co., Wis.  
 # 6-111

RAYMOND TERZYNSKI

15 INCH BLACK PINE BEARING  
 SCRIBED BY HARRY C.

NELSON  
 (CHIC - INN)

BUETTNER

HARKINS

LIMITS - RHINELANDER. - PRESENT  
 CITY TOWNSHIP

OF PELICAN  
 TIE-IN TO B.T.

PROPOSED

CITY LIMITS

NORTH BOUNDARY HWY. 8

CENTER LINE PAVING

LINE LINCOLN ST.  
 9° 10' E.

DRILL HOLE IN PAVEMENT 5. FEET NORTH  
 IS THE PERPETUATED POSITION OF B.F.

REEVES

N L2850

L2850

✓

MAP #	<b>L 2850</b>
DATE FILED	12/7/11
BY	AH
DESCRIPTION FILED	
ONEIDA CO. SURVEYOR'S OFFICE	