

LAND PRESERVATION RECORD

IT IS THE PURPOSE OF THIS RECORD TO PRESERVE THE LOCATION OF A SURVEY OR LAND CORNER MONUMENT THAT MAY BE DISTURBED, REMOVED OR INACCESSIBLE DUE TO ROAD CONSTRUCTION OR OTHER ACTIVITY.

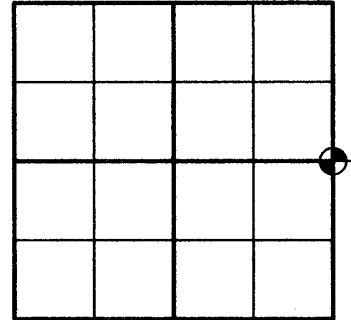
COUNTY: ONEIDA	CITY, VILLAGE, TOWN: TOWN OF PELICAN	SECTION: 17	TOWN: 36 NORTH	RANGE: 9 EAST
--------------------------	--	-----------------------	--------------------------	-------------------------

DESCRIBE WHAT WAS FOUND, IT'S LOCATION AND ORIGIN. IF KNOWN, DESCRIBE IF THE MONUMENT FOUND IS A 1/16 CORNER OR OTHER SUBDIVISIONAL CORNER; A MONUMENT CALLED FOR IN A DEED; A MONUMENT SHOWN ON A SURVEY MAPS OR PLAT, ETC., AND IN WHAT GOV'T LOT, 1/4-1/4 SECTION OR SUBDIVISION THE MONUMENT IS LOCATED.

OCTOBER 10, 2-7 - U.S. PUBLIC LAND SURVEY MONUMENT RECORD BY JON DULIN CALLS MONUMENT AS FOUND RAILROAD SPIKE.

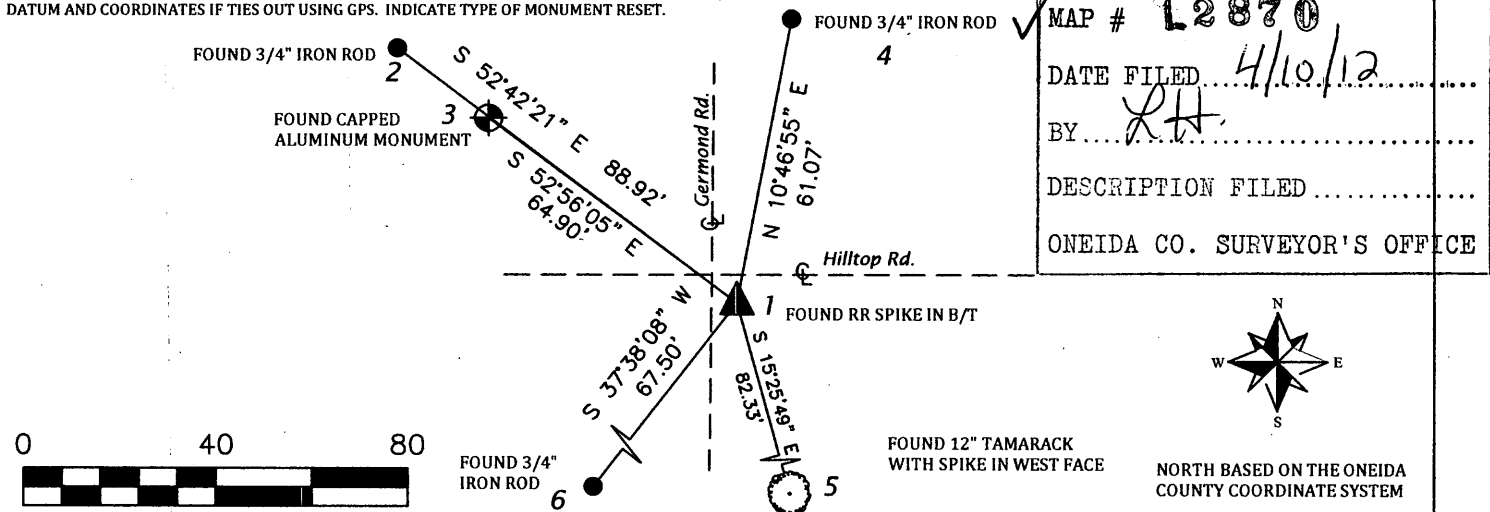
APRIL 2, 2012- FOUND EAST 1/4 CORNER, SEC. 17-36-09 AS DESCRIBED. ALL TIES AS SHOWN BELOW. TIE TO TAMARACK IS NAIL IN THE WEST FACE FOR DISTANCE AND CENTER OF BLAZE FOR BEARING.

APPROXIMATE LOCATION WITHIN SECTION 17

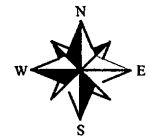
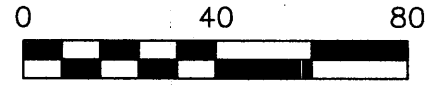


3609172000

PLAN VIEW OF LANDMARK MONUMENT LOCATION WITH BEARING AND DISTANCE TIES TO A MINIMUM OF FOUR DESCRIBED WITNESS OR REFERENCE MONUMENTS OF CONCRETE, NATURAL STONE, METAL, LIVE BEARING TREES OR EQUIVALENT MATERIAL OR INDICATE DATUM AND COORDINATES IF TIES OUT USING GPS. INDICATE TYPE OF MONUMENT RESET.



MAP # **L2870**
 DATE FILED 4/10/12
 BY RH
 DESCRIPTION FILED
 ONEIDA CO. SURVEYOR'S OFFICE



NORTH BASED ON THE ONEIDA COUNTY COORDINATE SYSTEM

SEAL:



PROFESSIONAL LAND SURVEYOR CERTIFICATE:

THIS LAND CORNER WILL BE RESET AFTER THE RECONSTRUCTION THE ROADS AS SHOWN HEREON. THIS CORNER HAS NOT BEEN TESTED FOR ITS ACCURACY DURING THE COURSE OF THIS PRESERVATION. IT IS RECOMMENDED THAT THOSE USING THE CORNER POSITION EVALUATE AND VERIFY IT PRIOR TO USE IN A SURVEY OR OTHER USE.

I HEREBY CERTIFY THAT I AM A DULY LICENSED PROFESSIONAL LAND SURVEYOR IN THE STATE OF WISCONSIN; THAT THE LOCATION OF THIS SURVEY OR LAND CORNER WAS REFERENCED BY ME OR UNDER MY DIRECT SUPERVISION AND CONTROL AND THAT THE INFORMATION SHOWN ON THIS RECORD IS TRUE AND CORRECT TO THE BEST OF MY KNOWLEDGE AND BELIEF.

[Signature]
 ANTHONY R. JONES, R.L.S. No. S-2508
 4/3/2012
 DATE