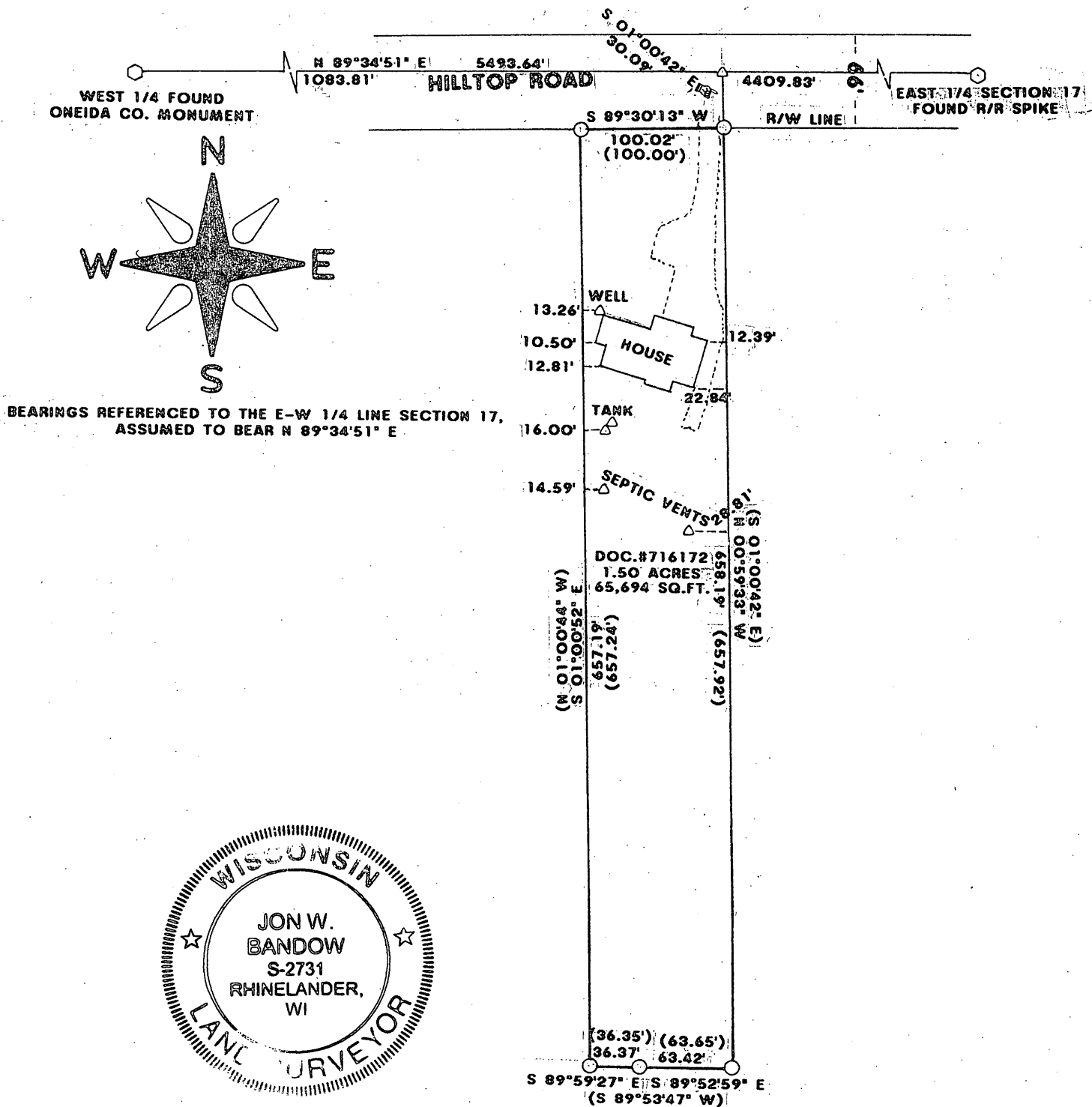


MAP # L 2898 -
 DATE FILED 12-3-12
 BY JB
 DESCRIPTION FILED
 ONEIDA CO. SURVEYOR'S OFFICE

LOCATED IN THE NW 1/4 OF THE SW 1/4, SECTION 17,
 T36N, R9E, TOWN OF PELICAN, ONEIDA COUNTY, WISCONSIN



I JON W. BANDOW HEREBY CERTIFY THAT I HAVE SURVEYED THE ABOVE PARCEL OF LAND UNDER THE DIRECTION OF KARL WELCH AND THAT THIS MAP IS A TRUE AND CORRECT REPRESENTATION OF THE LANDS SURVEYED TO THE BEST OF MY KNOWLEDGE AND BELIEF, THAT I HAVE COMPLIED WITH A-E 7 OF THE WISCONSIN ADMINISTRATIVE CODE; AND THAT I HAVE PROVIDED A DESCRIPTION OF THE PARCEL ON A SEPARATE SHEET.

LEGEND:

- FOUND 1 1/4" IRON PIPE
- () RECORDED AS
- △ CALCULATED POSITION

Jon W. Bandow
 JON W. BANDOW
 12-12-12
 DATE

GENISOT & ASSOCIATES, INC.
 RHINELANDER, WISCONSIN

JOB #11266
 SCALE 1" = 100' 10/8/12