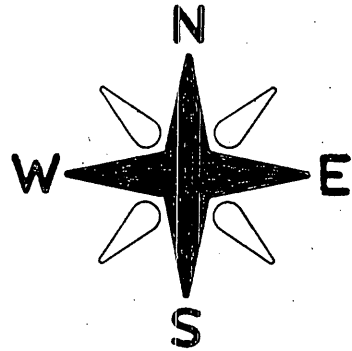


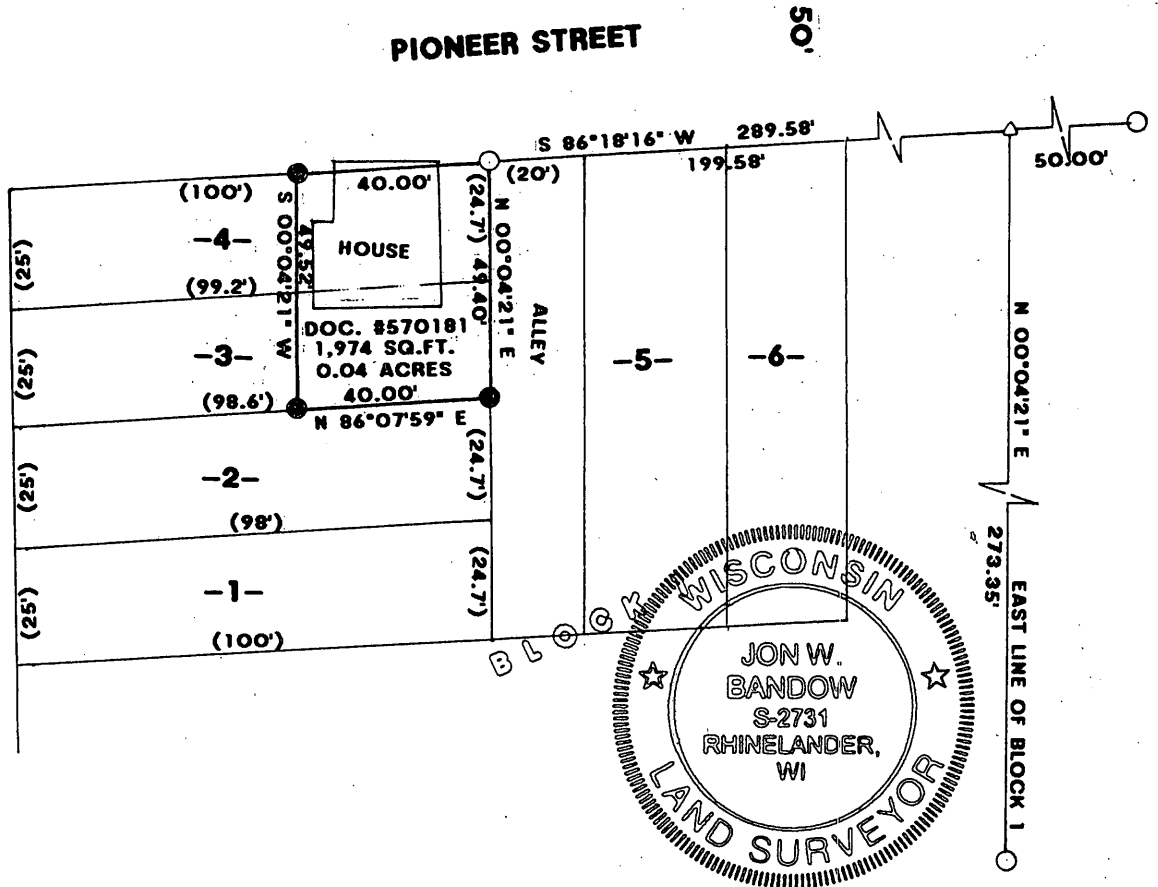
MAP # L 2901 -
 DATE FILED 12-3-12
 BY JB
 DESCRIPTION FILED
 ONEIDA CO. SURVEYOR'S OFFICE

**THE EAST 40' OF LOTS 3 & 4, BLOCK 1,
 PLAT OF OLD COLONY GARDENS
 LOCATED IN PART OF GOV'T. LOT 7, SECTION 8, T36N, R9E,
 TOWN OF PELICAN, ONEIDA COUNTY, WISCONSIN**

BEARINGS REFERENCED TO THE EAST LINE OF BLOCK 1,
 OLD COLONY GARDENS, ASSUMED TO BEAR N 00°04'21" E



C.T. HWY. "G"



LEGEND:

- FOUND 1" IRON PIPE
- SET 1" X 20" IRON PIPE
- () RECORDED AS
- △ CALCULATED POSITION

I JON W. BANDOW HEREBY CERTIFY THAT I HAVE SURVEYED THE ABOVE PARCEL OF LAND UNDER THE DIRECTION OF BENNY RHOADES AND THAT THIS MAP IS A TRUE AND CORRECT REPRESENTATION OF THE LANDS SURVEYED TO THE BEST OF MY KNOWLEDGE AND BELIEF, AND THAT I HAVE COMPLIED WITH A-E 7 OF THE WISCONSIN ADMINISTRATIVE CODE.

Jon W. Bandow
 JON W. BANDOW

8-27-12
 DATE

GENISOT & ASSOCIATES, INC.

JOB #11259
 SCALE 1" = 40'