

LAND CORNER PRESERVATION RECORD

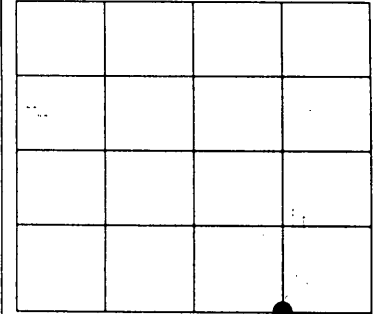
It is the purpose of this record to preserve the location of a survey or land corner monument that may be disturbed, removed or inaccessible due to road construction or other activity.

County: ONEIDA	City, Village, Town: TOWN OF STELLA	Section: 14	Town: T37N	Range: R10E
--------------------------	---	-----------------------	----------------------	-----------------------

Describe what was found, its location and origin. If known, describe if the monument found is a 1/16 corner or other subdivisional corner; a monument called for in a deed; a monument shown on a survey map or plat etc and in what GL or 1/4 - 1/4 section or subdivision the monument is located.

Approximate location within Section **E 1/16 SOUTH LINE**

**02/15/2012 Todd Loftus found Mag nail as noted on Oneida County Plat of Survey B7345
And witness as shown below.**



3710140010

MAP # **L2905**

DATE FILED 1-25-13

BY JB

DESCRIPTION FILED

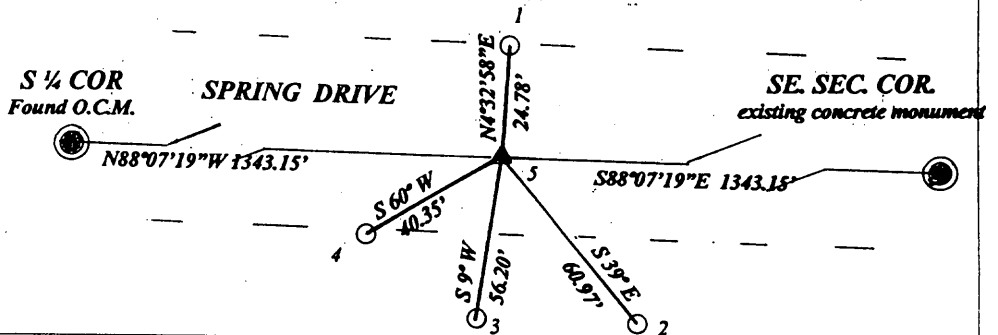
ONEIDA CO. SURVEYOR'S OFFICE

Plan view map of landmark monument location with bearing and distance ties to a minimum of four described witness or reference monuments of concrete, natural stone, metal, live bearing trees or equivalent material or indicate datum & coordinates if tied out using GPS. Indicate what was reset.

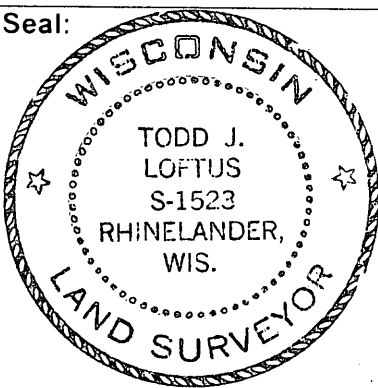
LEGEND

- 1- found 1" iron pipe
- 2- set spike in 8" triple maple
- 3- set spike in 7" Oak
- 4- set 1" iron pipe
- 5- found Mag. nail

NORTH ↑
NO SCALE



Seal:



PROFESSIONAL LAND SURVEYOR CERTIFICATE:

This land corner was referenced out in advance of road construction or other activity as an act of preserving survey evidence or monuments. This corner has not been tested for its accuracy during the course of this preservation. It is recommended that those using the corner position evaluates and verifies it prior to use in a survey or other use.

I hereby certify that I am a duly licensed Professional Land Surveyor in the State of Wisconsin; that the location of this Survey or Land Corner was referenced by me, or under my direct supervision and control and that the information shown on this record is true and correct to the best of my knowledge and belief.

Todd Loftus
Signature

March 5th 2012
Date

L2905