

OWENS-ILLINOIS

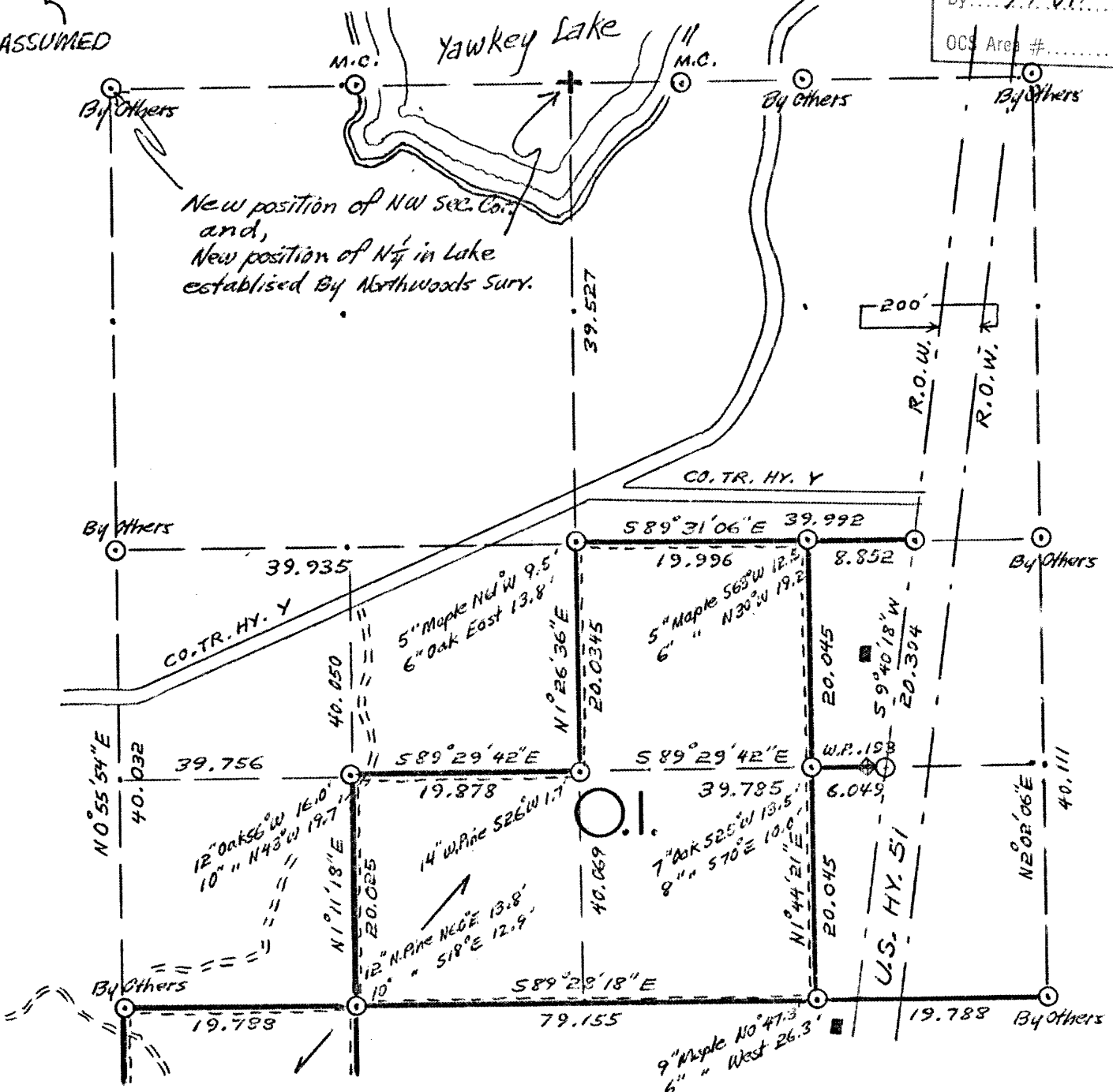
DATE 7/12/77

T.38 N R. 6 E SEC. 22

ONEIDA COUNTY, WIS.

RECEIVED & FILED # L294
 Oneida County Surveyor's Office
 Date FEB. 14 1986
 By M. J. M.
 OCS Area #

ASSUMED



LEGEND CORNERS & LINES

- ⊙ Iron Pipe or Cap
- ⊗ Concrete
- ⬠ Wood Post
- △ Stake
- X Hub
- + Spike

- ==== True-Blazed-Painted
- True Cut - Blazed
- ==== Approximate - Painted
- Random
- xxxxx Fence
- - - - R.O.W.

MAP BY
 W.H. Stuth
 Survey By O.I.
 Stuth & Pelky

Scale 1 1/2" = 1320.0'