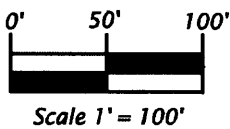
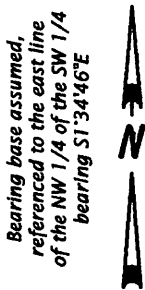


L 2971

L 2971

LOT 2
OF
VOL. 19 CSM, PG. 4171
PART OF THE
NW 1/4 OF THE SW 1/4
SECTION 24, T36N, R8E
TOWN OF CRESCENT
ONEIDA COUNTY, WISCONSIN.

- Legend**
- ⊙ = 1.3" dia. iron pipe found in place.
 - = 0.75" dia. iron rod found in place.



Bearing base assumed,
 referenced to the east line
 of the NW 1/4 of the SW 1/4
 bearing S1°34'46"E

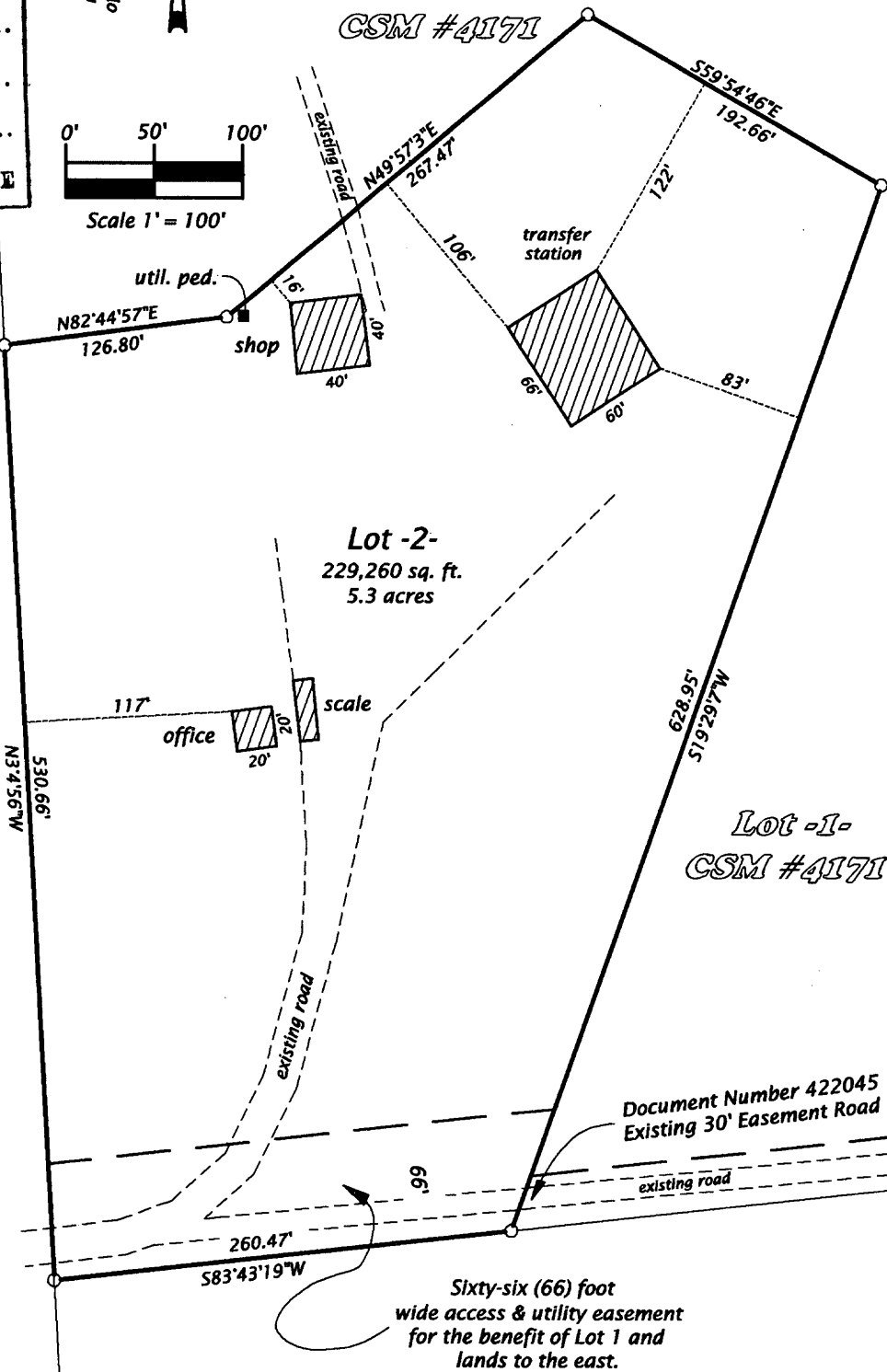
MAP # **L 2971**
 DATE FILED 5-20-14
 BY JB
 DESCRIPTION FILED
 ONEIDA CO. SURVEYOR'S OFFICE

State Highway "17"

Lot -1-
 CSM #4171

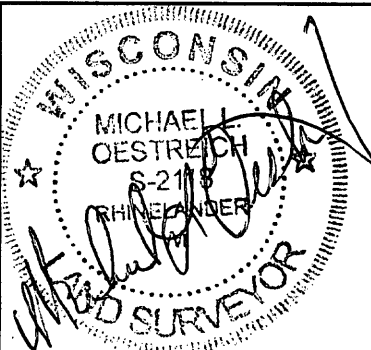
Lot -2-
 229,260 sq. ft.
 5.3 acres

Lot -1-
 CSM #4171



Document Number 422045
 Existing 30' Easement Road

This is to certify that this map or plat and the survey on which it is based were made in accordance with the 2011 minimum standard detail requirements for ALTA\ACSM land title surveys jointly established and adopted by ALTA and NSPS, and includes No.'s 1 and 7a of items of Table A thereof. The fieldwork was completed August 11th, 2013.



Oestreich
Surveying &
Mapping, LLC
 5946 Forest Lane
 Rhinelander, WI 54501
 Tel. (715) 362-5538
 RLS2118@charter.net

Map No. 13-16-alta
 File No. 24-368

Drafted by: M. Oestreich
 Sheet 1 of 1 sheet

L 2971