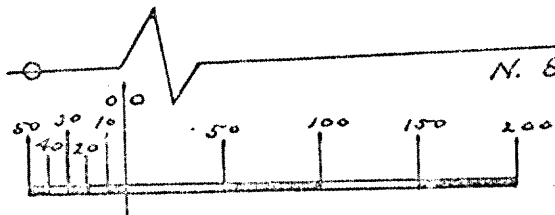
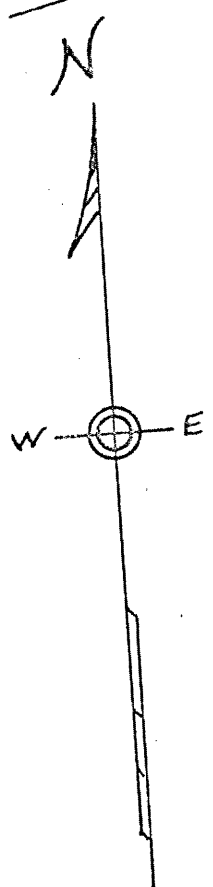
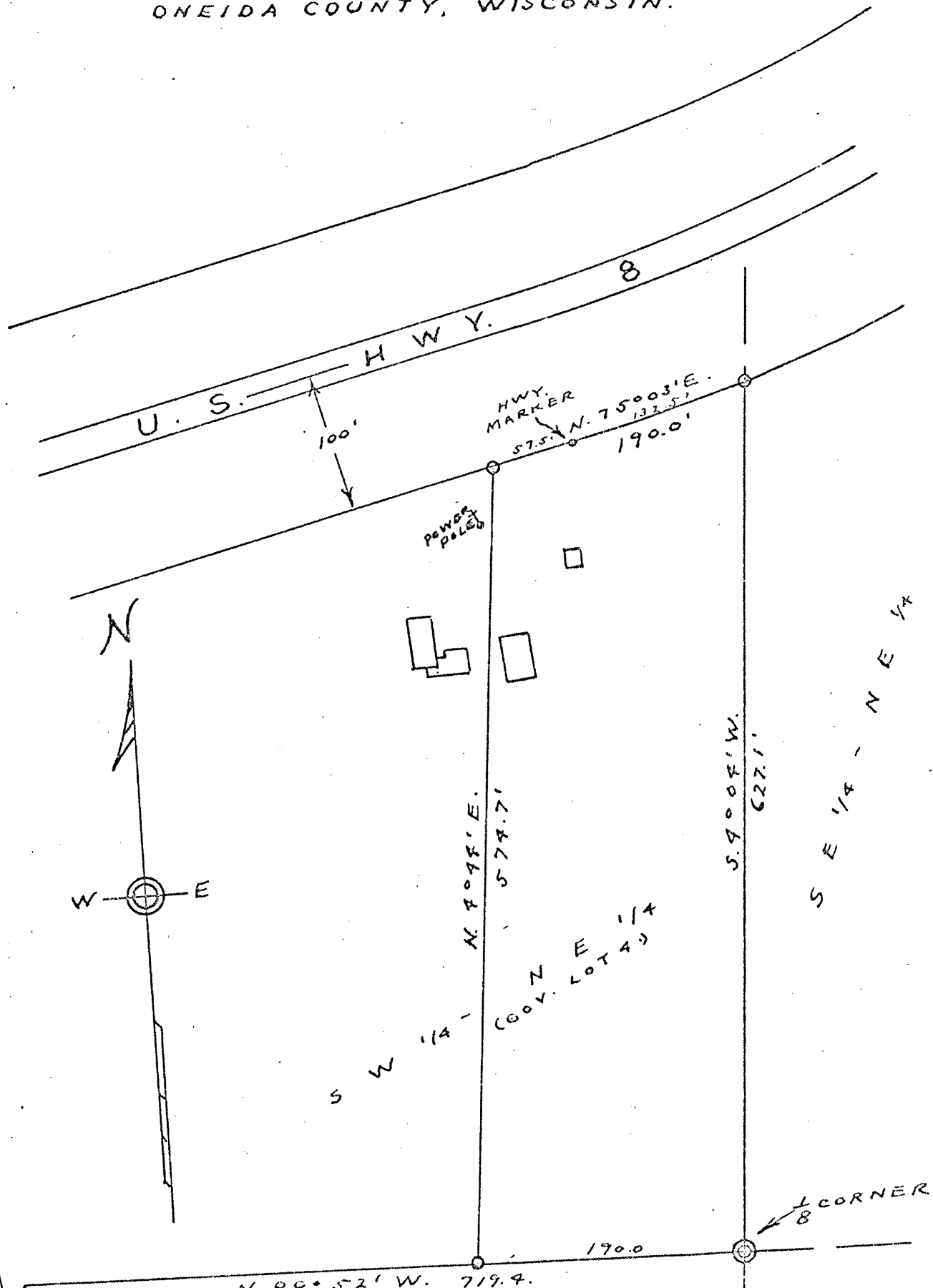


BRUYETTE & EVANS SURVEY

IN THE

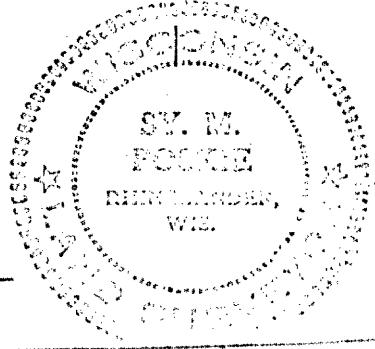
SW 1/4 - NE 1/4, (GOVT. LOT 4), SEC. 11, T. 36 N., R. 8 E., ONEIDA COUNTY, WISCONSIN.

RECEIVED & FILED #... **L3** ...
 Oneida County Surveyor's Office
 Date... **FEB. 11 1988** ...
 By... **M.J.H.** ...
 OCS Area #.....



SCALE 1" = 100'

○ IRON PIPE



DATED :: 1-8-1971

By *M. Posekie*
 WIS 45-140

FILE 87