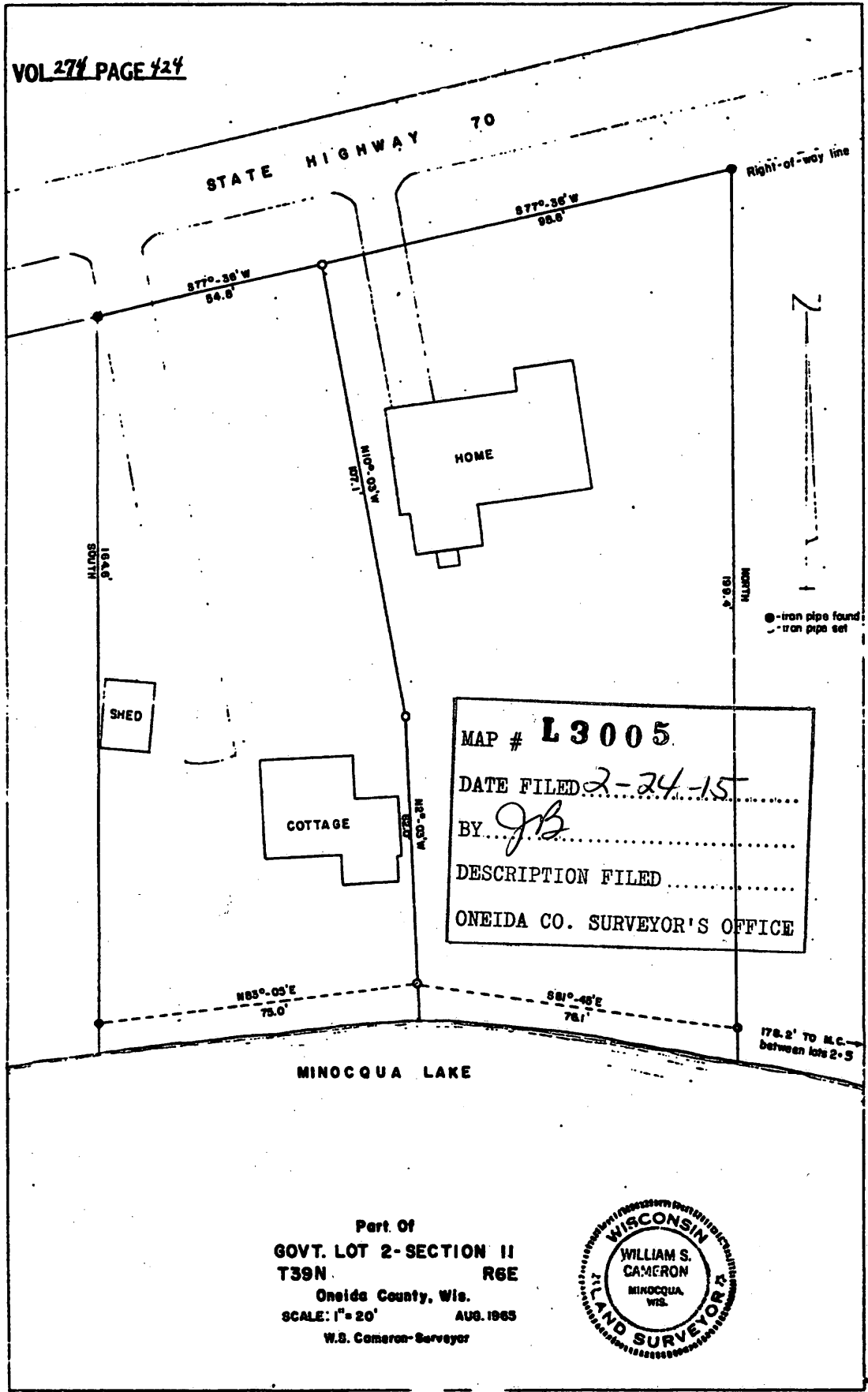


VOL 277 PAGE 424



MAP # **L3005**
 DATE FILED 2-24-15
 BY JB
 DESCRIPTION FILED
 ONEIDA CO. SURVEYOR'S OFFICE

Part Of
 GOVT. LOT 2-SECTION 11
 T39N R6E
 Oneida County, Wis.
 SCALE: 1" = 20' AUG. 1965
 W.S. Cameron-Surveyor

