

MAP # L3085

DATE FILED 5/12/2016

State Highway Commission of Wisconsin  
Form E-D-107-65

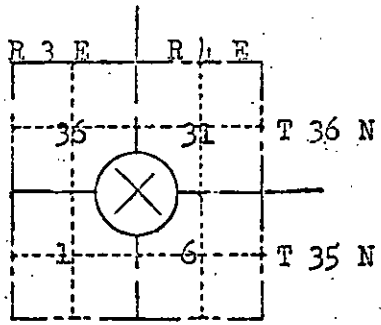
TO SURVEY NOTES

RESERVATION OF LANDMARKS  
Pursuant to Section 59.635(7) Wisconsin Statutes

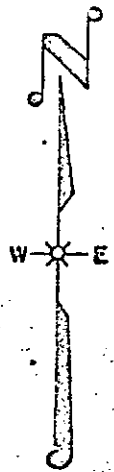
DESCRIPTION FILED

COUNTY		
Lincoln		
TOWN		
Somo		
HIGHWAY		
Knox		
SECTION	TOWNSHIP	RANGE
36-31-1-6	35-36 N	3-1 E
TYPE OF LANDMARK		
3/4" iron pipe section corner on township & range lines.		

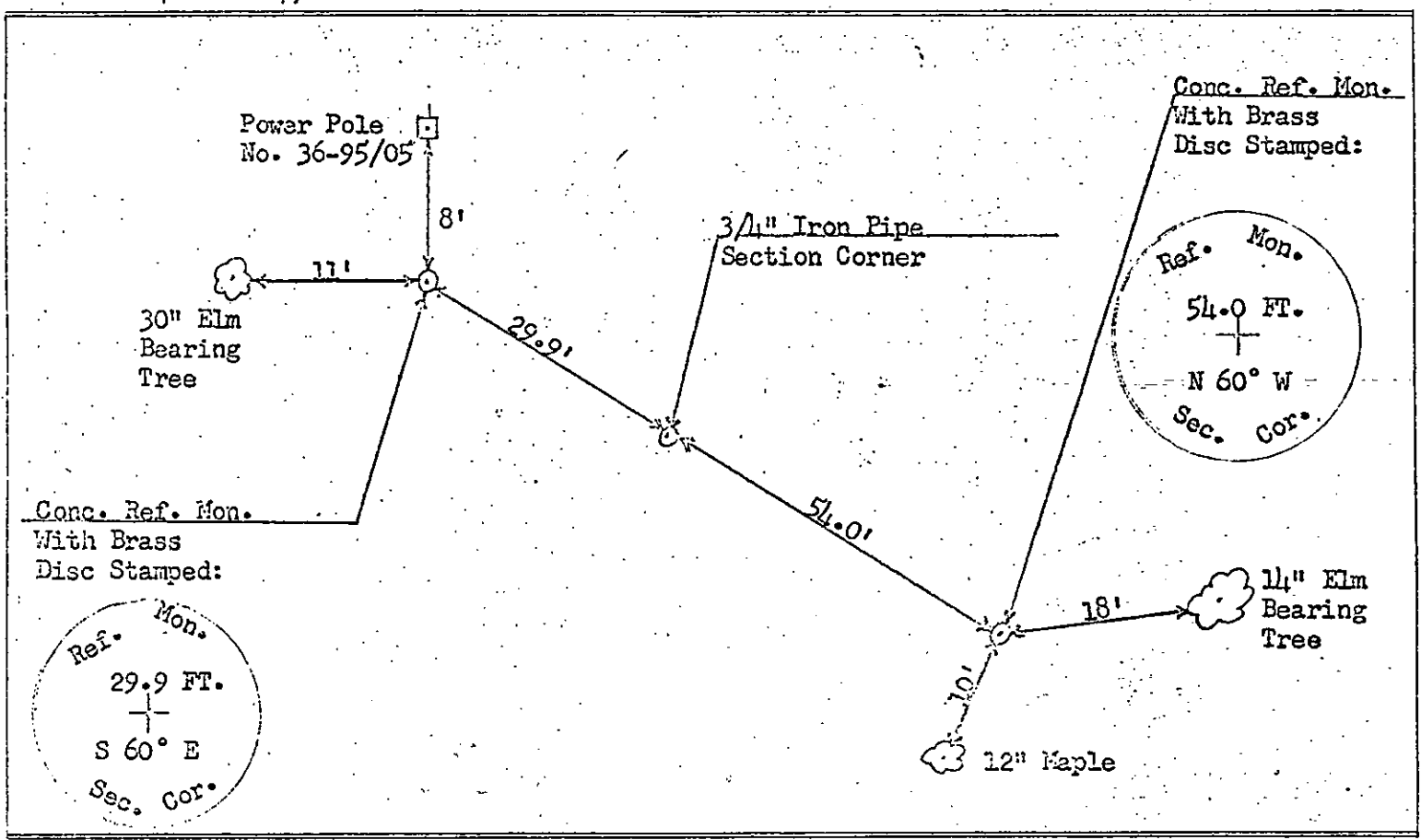
ONEIDA CO. SURVEYOR'S OFFICE



LOCATION SKETCH  
(Location of landmark indicated by "x")



This space for copy of field notes or ties to the above described landmarks



FILED UNDER PROJECT		
NUMBER S 1129(2)		
SHC DISTRICT OFFICE NUMBER	CITY	COUNTY
7	Rhinolander	Oneida
Referred By		
NAME Jack Wallin		
TITLE Party Chief		
DATE 6/1/66		

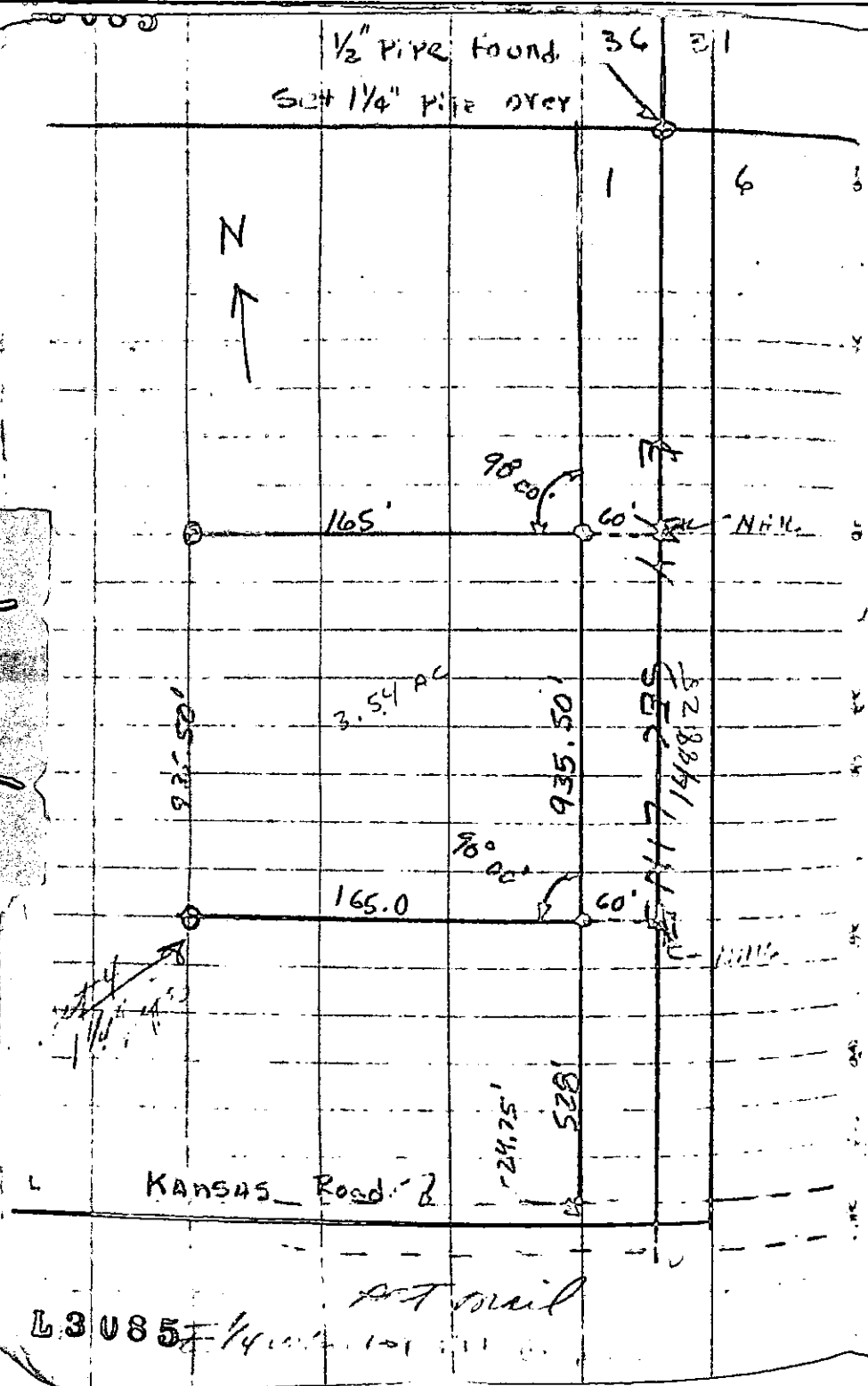
COUNTY CLERK'S OFFICE	
COUNTY OF	WISCONSIN } 55
DATE RECEIVED FOR RECORD	DATE COPY SENT TO COUNTY SURVEYOR
7-11-66	7-14-66
SIGNATURE OF COUNTY CLERK	
<i>Raymond W. O'Connell</i>	

1/2" Pipe found 36 21  
Set 1/4" pipe over

MAR HEINE Tjm RRS  
Aug 18, 2020 Job # 88  
271 / T E S N, V 115

(76)  
FB42

CLIENT MARHEINE PROJ 88 PAGE 76  
S... 35 R 3 E CREW Tjm RRS  
DATE 8/18/20 TEMP CONT FR ON



TIES SEC COR  
 36' Elm NW 1/4 'BT' NW 37.60'  
 Cor Conc. Patch Ceap STAYB NR 2  
 16' Elm NW 1/4 'BT' SE 69.70  
 Post on NW Cor Eving 96.10

TIES E 1/4 Cor.  
 PP NW 64.60  
 Yellow sign marker SW 67.00  
 " " " " SE 68.15  
 STOP sign pole NW 47.15

6	5	4	3	2	1*
7	8	9	10	11	12
18	17	16	15	14	13
19	20	21	22	23	24
30	29	28	27	26	25
31	32	33	34	35	36

DOT  
6-28-99  
Re.  
3/15/01

CHECK BOX IF CONTINUED ON BACK:

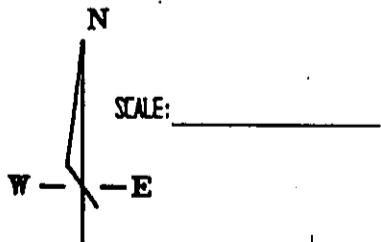
- RECORD CODES  
 FB = FIELD BOOK  
 L = LARGE MAP  
 S = SMALL MAP  
 V = VERTICAL FILE  
 SD = SECTION DRAWING  
 CSM = CERTIFIED SURVEY MAP  
 P = RECORDED PLAT

T35 N, R 3E

NO.

### U. S. PUBLIC LAND SURVEY MONUMENT RECORD

1. THE COMMON CORNER OF SECTIONS 1, 6, 31, 36, T35E36N, R3E & 4E
2. ORIGINAL GOVERNMENT SURVEYOR: ALEXANDER ANDERSON, DATE: JULY, 1864
3. ORIGINAL BEARING TREES: - FEET - SUBSEQUENT RECOVERY RECORD:
4. SUGAR 12" N52°W 21 LKS -
5. SUGAR 12" N60°E 25 LKS -
6. BIRCH 12" S20°E 19 LKS -
7. SUGAR 12" S25°W 12 LKS -
8. ORIGINAL TOPOGRAPHY CALLS: - FEET - PRESENT TOPOGRAPHY:
9. CREEK 50 LKS WIDE SOUTH 2.52 CHS -
10. CREEK 50 LKS WIDE WEST .80 CHS -
11. SUBSEQUENT RECORDS IN COUNTY SURVEYOR OFFICE WHICH REFER TO THIS CORNER: S-306, L-422, V-1499, V-1596
12. SD1-35-3E, S-171, V-84, FB67-16,
- 13.
14. SUBSEQUENT MONUMENTS OF RECORD: - SURVEYOR - DATE - RECORD NO.
15. SET 1" X 24" IRON PIPE LEVEL WITH BLACKTOP - RISBERG - 1966 - V-1499
- 16.
17. SUBSEQUENT BT'S OR WM'S: - FEET - SURVEYOR - DATE - RECORD NO.
18. AM. ELM 38" N70°W - 40 - RISBERG - 1966 - V-1499
19. AM. ELM 8" S55°W - 48 - RISBERG - 1966 - V-1499
20. AM. ELM 12" S68°E - 70 - RISBERG - 1966 - V-1499
21. MEASURED DISTANCE - ADJOINING CORNER - RECORD FEET - SURVEYOR - DATE - RECORD NO.
22. - 1/4 Cor WEST 39.25 CHS - - SD1
23. - 1/4 Cor SOUTH 44.0 CHS - - SD1
24. - 1/4 Cor WEST 39.28 CHS - - NICHOLS 1905 - V-84, FB67-16
25. - 1/4 Cor NORTH 39.70 CHS - - NICHOLS 1905 - V-84, FB67-16
26. OTHER INFORMATION IN RECORDS: L-422 SHOWS TOWNSHIP CORNER IN E TOWN ROAD 620'±
27. NORTH OF CENTERLINE USH B IN 1946.
- 28.
29. EVIDENCE FOUND AT CORNER:
- 30.
- 31.
32. PERSONS WHO SAW EVIDENCE:
33. OTHER REASONS FOR LOCATING CORNER HERE:
- 34.
- 35.
36. PRESENT CORNER MONUMENT:
- 37.
38. PRESENT WITNESS MONUMENTS:
- 39.
40. GENERAL LOCATION DESCRIPTION:
- 41.
42. STATE COORDINATES - N ZONE:
43. N
44. E
45. BASIS FOR TIE BEARINGS:



DRAWN BY: \_\_\_\_\_

- = THIS CORNER
- ⊗ = IRON WITNESS MONUMENT
- = OTHER REFERENCES - TREES MEASURED TO ALUMINUM NAIL IN SIDE TO COINCIDE WITH CENTER AT ROOT CROWN

MAP #	L3085
DATE FILED	5/12/2016
BY	HB
DESCRIPTION FILED	
ONEIDA CO. SURVEYOR'S OFFICE	

SEQUENCE NO.: V3500 - E 0300

I CERTIFY THAT ON THE \_\_\_\_\_ DAY OF \_\_\_\_\_, 19\_\_\_\_,  
 I PERPETUATED THIS CORNER AS SHOWN.  
 DATED THIS \_\_\_\_\_ DAY OF \_\_\_\_\_, 19\_\_\_\_.

L3085

SEAL

LAND SURVEYOR

L3085