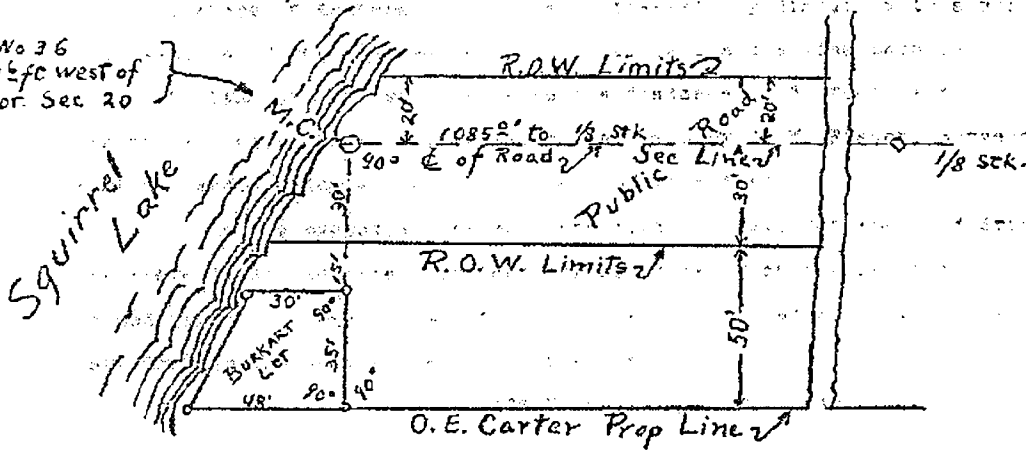


M.C. No 36
2427 1/2 fc west of
N.E. Cor. Sec 20



Scale 1" = 40'
C.W. Fisher sur.
Eagle River
Wis.

Part of Govt Lot No 1
Sec 20 T 39N - R 5E
Oneida County, Wisconsin

Part of Vol 130, PG 129 - D6ED

MAP #	✓ L 3154
DATE	10/31/17
BY	UMJO
FOR	
ONEIDA CO. SURVEYOR'S OFFICE	