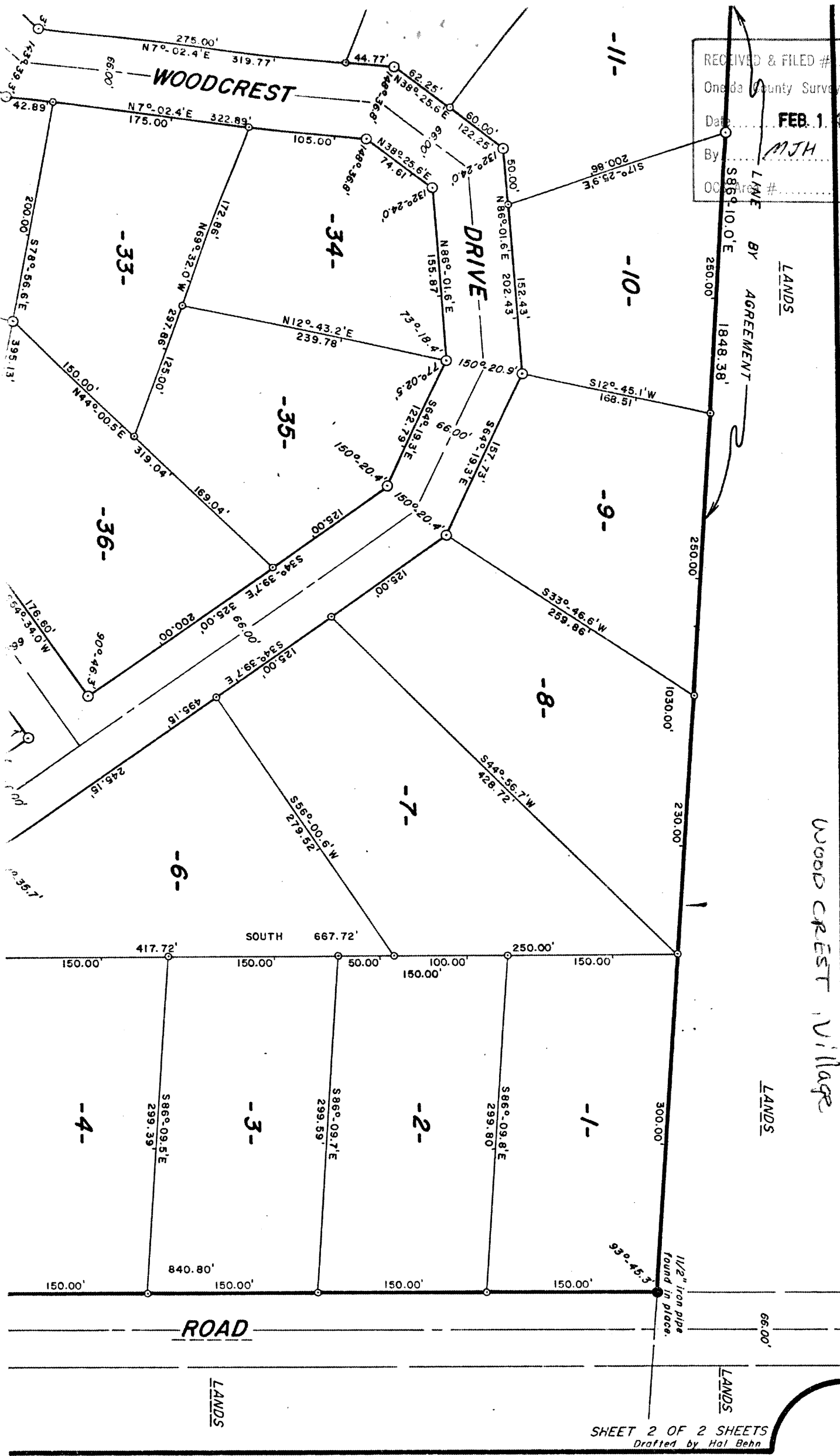


RECEIVED & FILED # **L322**
 Oneida County Surveyor's Office
 Date **FEB 14 1988**
 By **MJH**
 LME # _____
 S869.10.0'E



WOODCREST VILLAGE

18-36-8

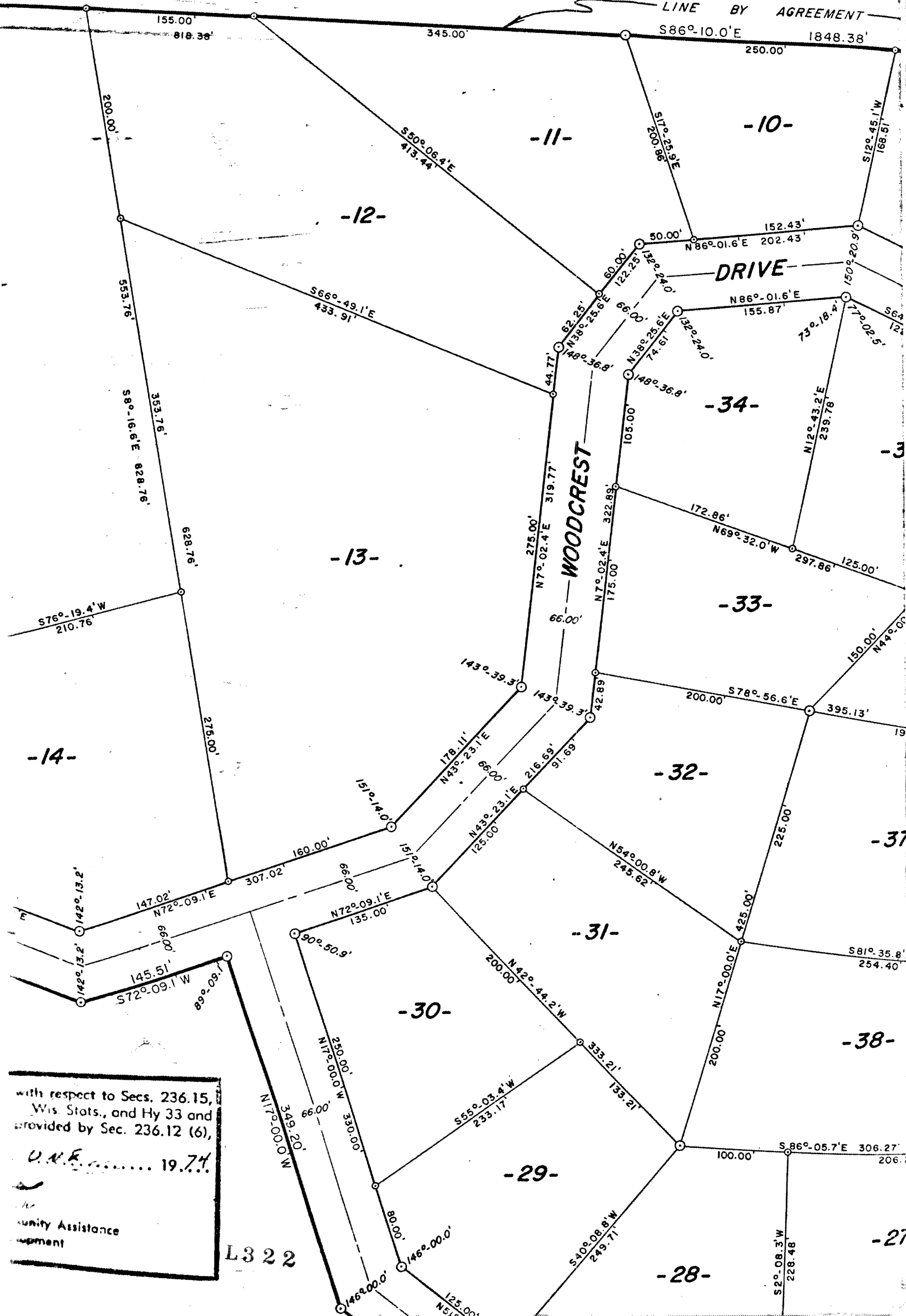
2/2/10
 Page 60

L322

LANDS

LANDS

LINE BY AGREEMENT



with respect to Secs. 236.15,
 Wis. Stats., and Hy 33 and
 provided by Sec. 236.12 (6),
 U.N.F. 19.74

Community Assistance
 Department

L322

L322