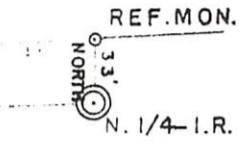
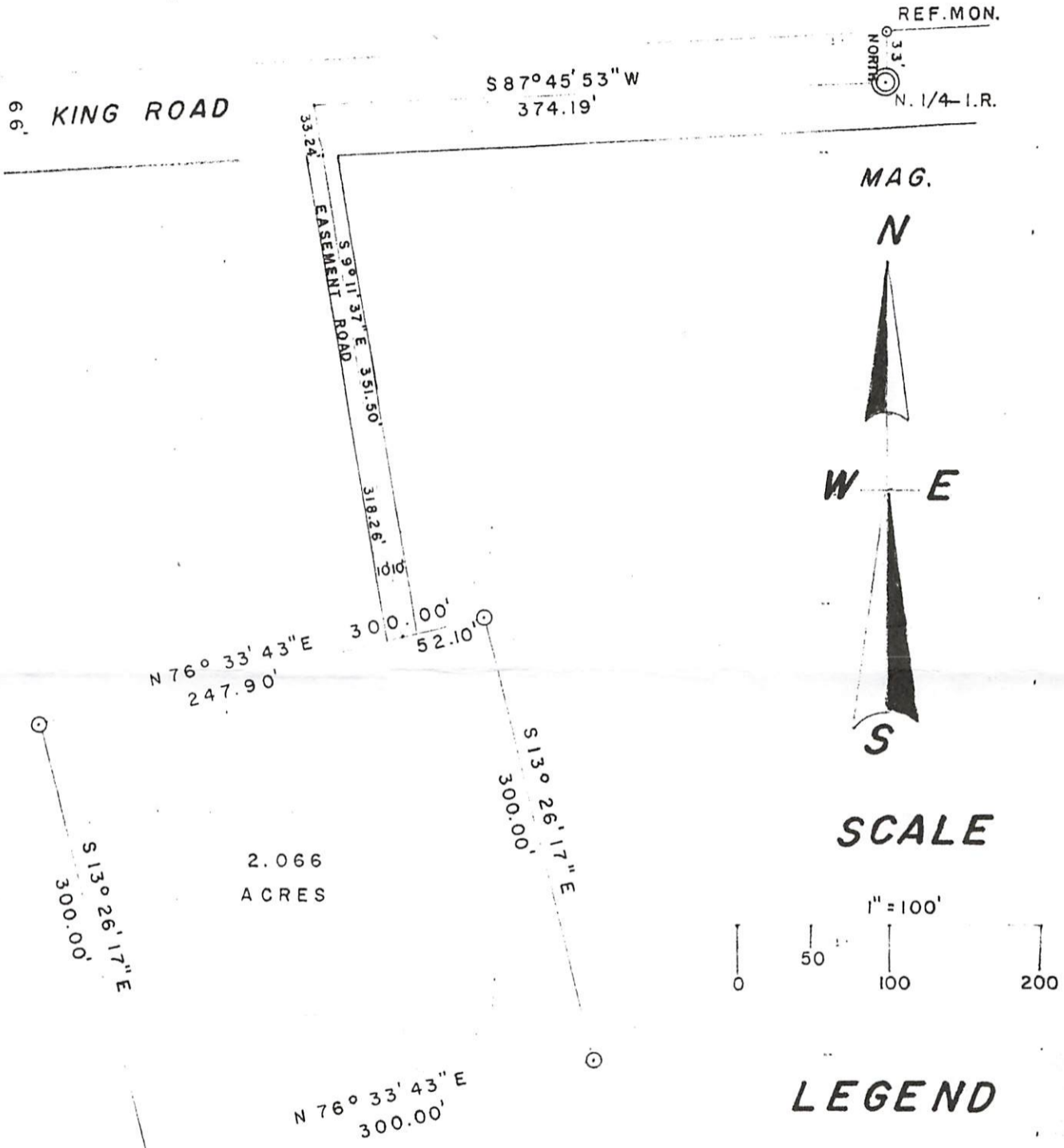
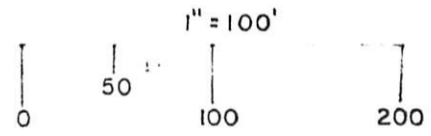


PART OF THE NE. 1/4, NW. 1/4, SEC. 24, T. 38 N., R. 9 E., ONEIDA COUNTY, WI. FOR RICHARD RUNNING



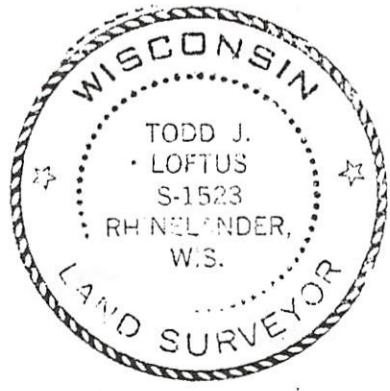
SCALE



LEGEND

- ⊙ SUBDIVISIONAL MONUMENT
 - 1" IRON PIPE SET
 - 2" CAPPED I.P. by RIPCO
- 1/14/80

MAP # **L3290** ✓
 DATE FILED **4-8-2022**
 BY **JAP**
 DESCRIPTION FILED
 ONEIDA CO. SURVEYOR'S OFFICE



Todd Loftus
 1523

DRAFTED by T. LOFTUS
 no. 013