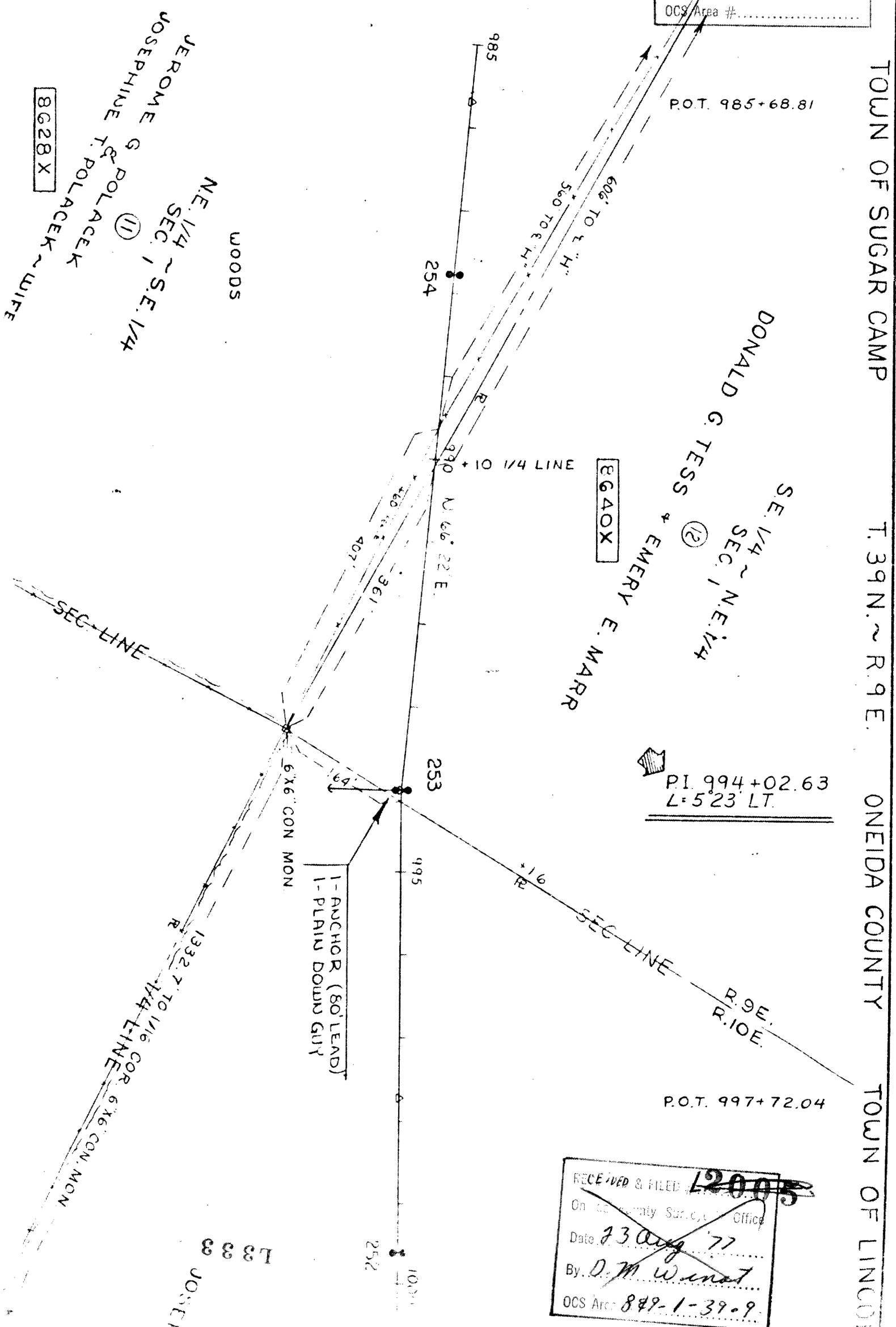


PLAN	BY	DATE
SURVEYED		
PLOTTED		
NOTE BOOK	ALIGNMENT CHECKED	T. F.
No.	RT. OF WAY CHECKED	

RECEIVED & FILED # L333
Oneida County Surveyor's Office
Date FEB. 14 1986
By MJH
OCS Area #.....



TOWN OF SUGAR CAMP T. 39N. ~ R. 9E. ONEIDA COUNTY TOWN OF LINCOLN

RECEIVED & FILED # 12005
Oneida County Surveyor's Office
Date 23 Aug 77
By D. M. Winst
OCS Area # 849-1-39-9