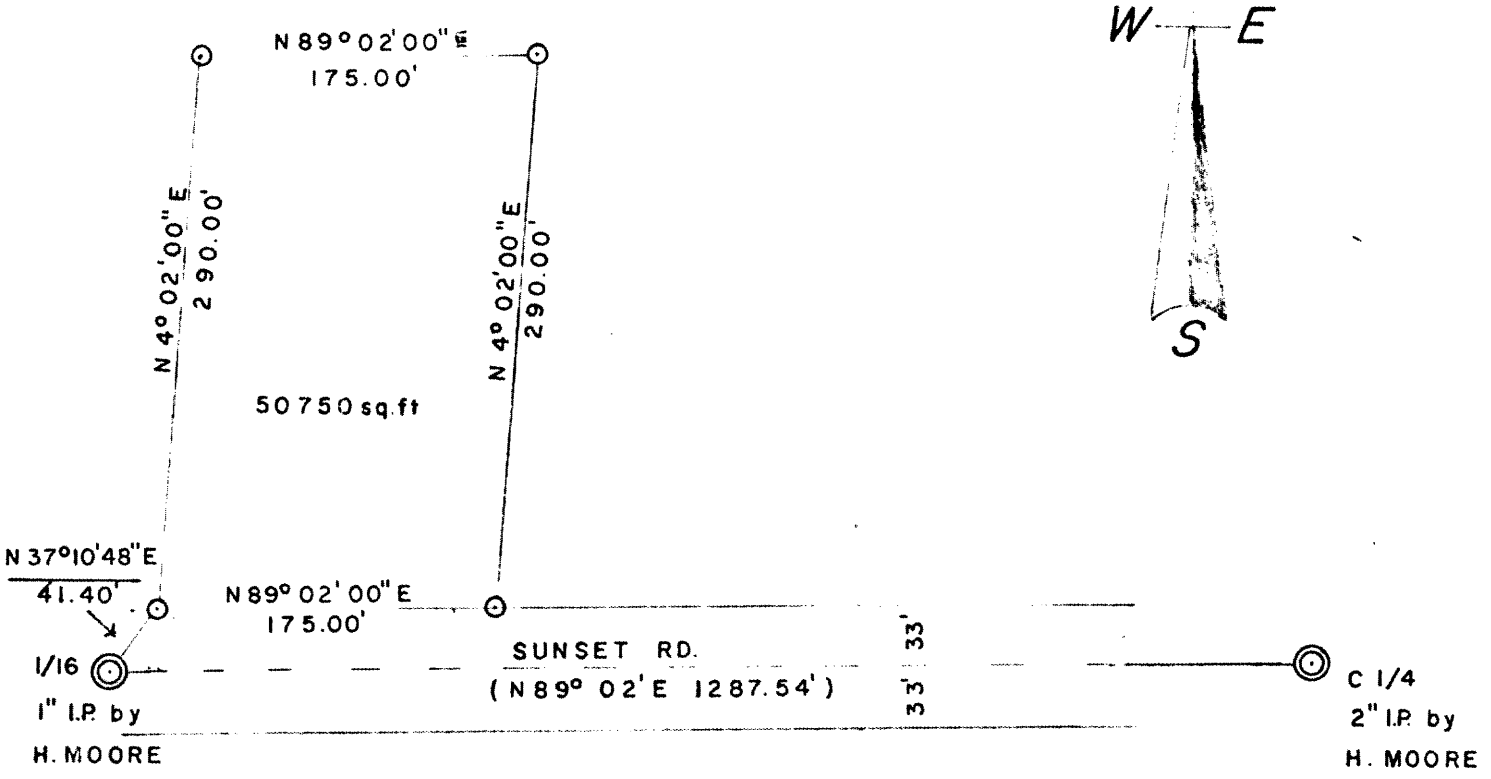


PART OF THE S.E. 1/4, OF THE  
 N.W. 1/4, SEC. 23, T. 38N., R. 9E.,  
 TOWN OF SUGAR CAMP, ONEIDA  
 COUNTY, WI.

RECEIVED & FILED # **L335**  
 Oneida County Surveyor's Office  
 Date **FEB. 14 1986**  
 By *MJM*  
 OCS Area #.....



LEGEND

- ⊙ SUBDIVISIONAL MONUMENT
- 1" IRON PIPE  
 (RECORDED AS)  
 7/25/79  
 SURVEY FOR WALTER SCHWALBE

SCALE

1" = 100'



*Todd Loftus*  
 R.L.S. 1523

1895



NOTE - PERCULATION TEST PERFORMED BY  
 SCOTT SCHWALBE & KEN KOGAR