

RECEIVED & FILED # **L3.3.9**

Oneida County Surveyor's Office

Date... **FEB. 14 1986**

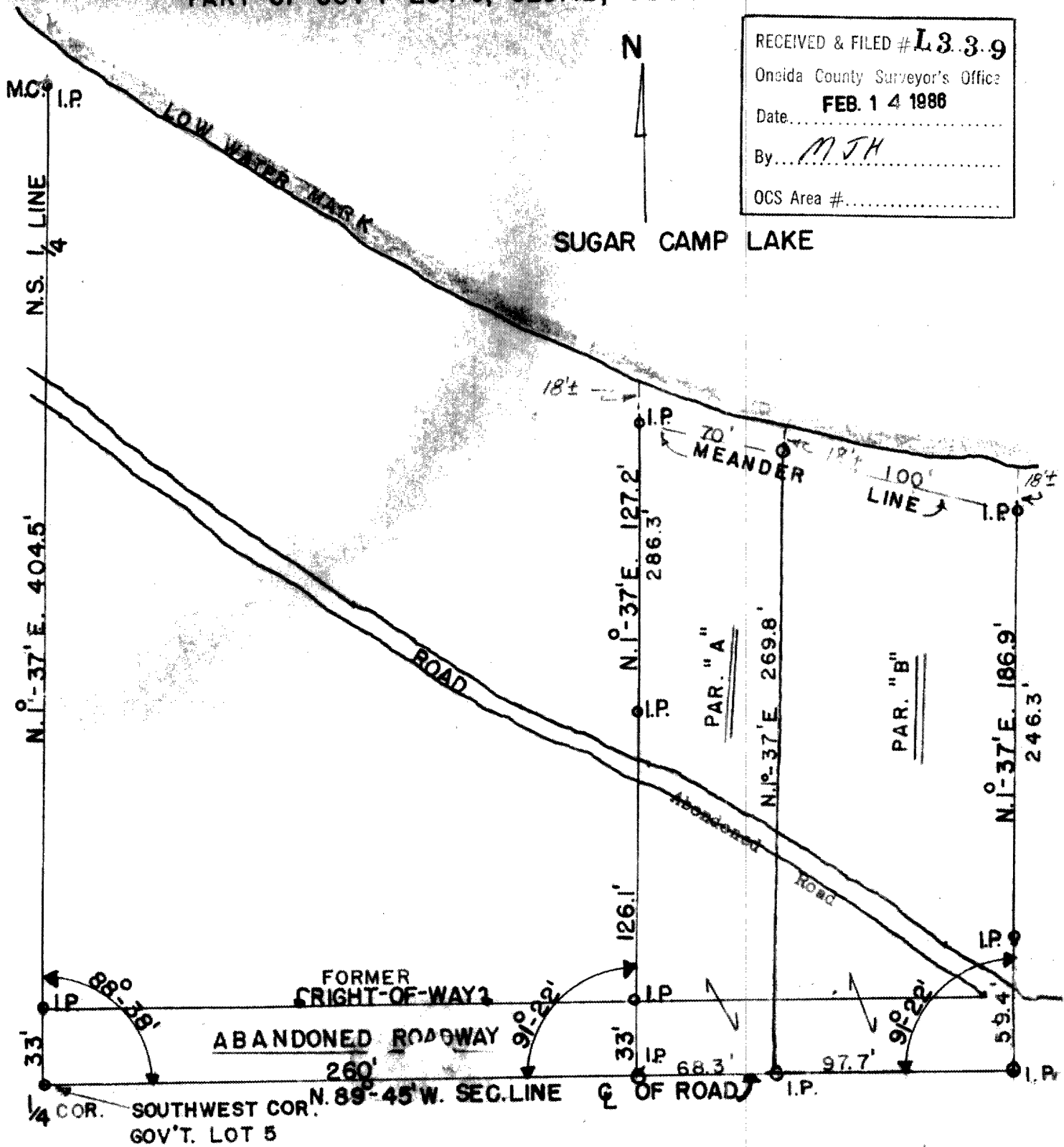
By... *M J H*

OCS Area #.....

N



SUGAR CAMP LAKE



688T

GENISOT ENGINEERING CO.
RHINELANDER, WIS.

SURVEY FOR
R.J. REINER
525 MELROSE AVE.
CHICAGO 18, ILL. 60657

SCALE 1"=60' DATE AUG. 10, 1955
DWN. BY J.J.H. DWG. NO. 1640-1

REV. 6-10-67