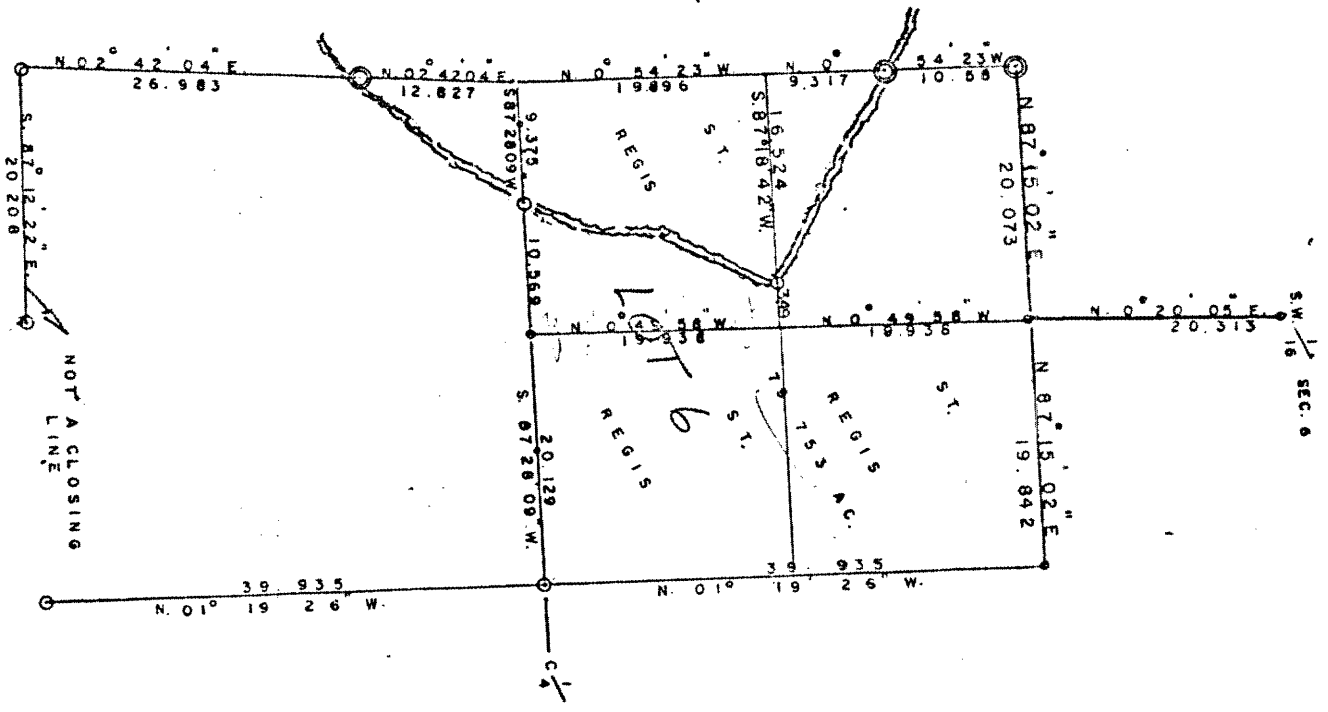


RECEIVED & FILED # **L340**
 Oneida County Surveyor's Office
 Date **FEB. 14 1986**
 By **MJH**
 OCS Area #.....

SUGAR
 CAMP
 LAKE



PART OF SECTION 7,
 TWP 38 N, RNG 10 E,
 ONEIDA COUNTY

BEARINGS ARE MAGNETIC
 SCALE ONE CHAIN, ONE TENTH INCH
 DATE OF SURVEY 1-11-66
 BY GEORGE DRIVAS
 G L O CORNERS
 R I P C O
 BY OTHERS
 ST. REGIS PAPER CO., RHINELANDER DIV.

L340