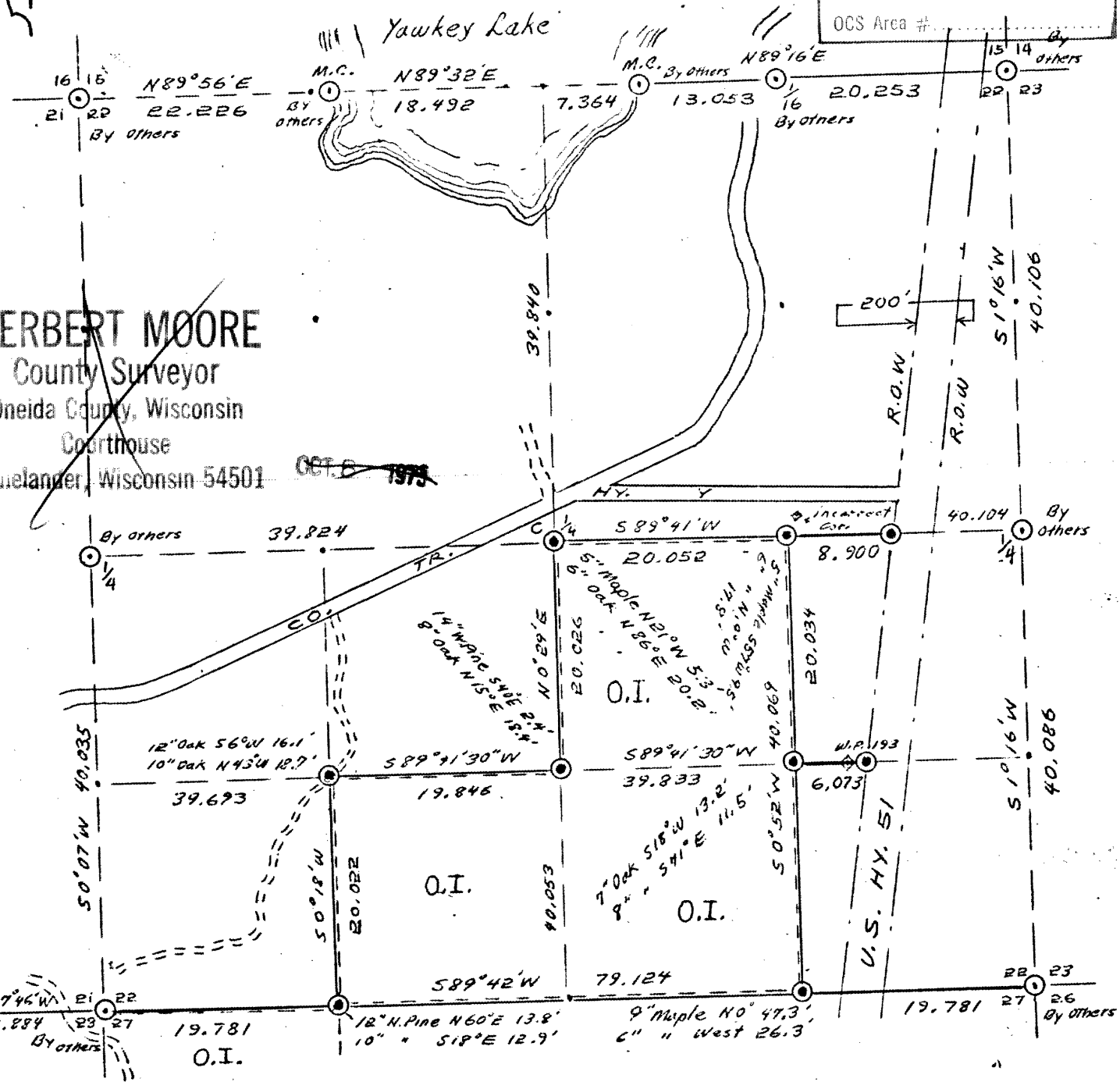


T.38N R.6E SEC. 22

ONEIDA COUNTY, WIS.

RECEIVED & FILED # L35  
 Oneida County Surveyor's Office  
 Date FEB. 1. 1. 1988  
 By MJH  
 OCS Area #



LEGEND CORNERS & LINES

- ⊙ Iron Pipe or Cap
- ⊗ Concrete
- ⊠ Wood Post
- △ Stake
- X Hub
- + Spike

- ===== True-Blazed-Painted
- True Cut-Blazed
- Approximate-Painted
- Random
- xxxxx Fence
- R.O.W.

MAP BY

W.H. Stuth  
 Surv. By O.I.

Scale 1 1/2" = 1320.0'

987

489