

PART OF THE
SE 1/4 OF THE NE 1/4
 SECTION 27, T 38N, R 5E
 TOWN OF MINOCQUA, ONEIDA COUNTY
 WISCONSIN

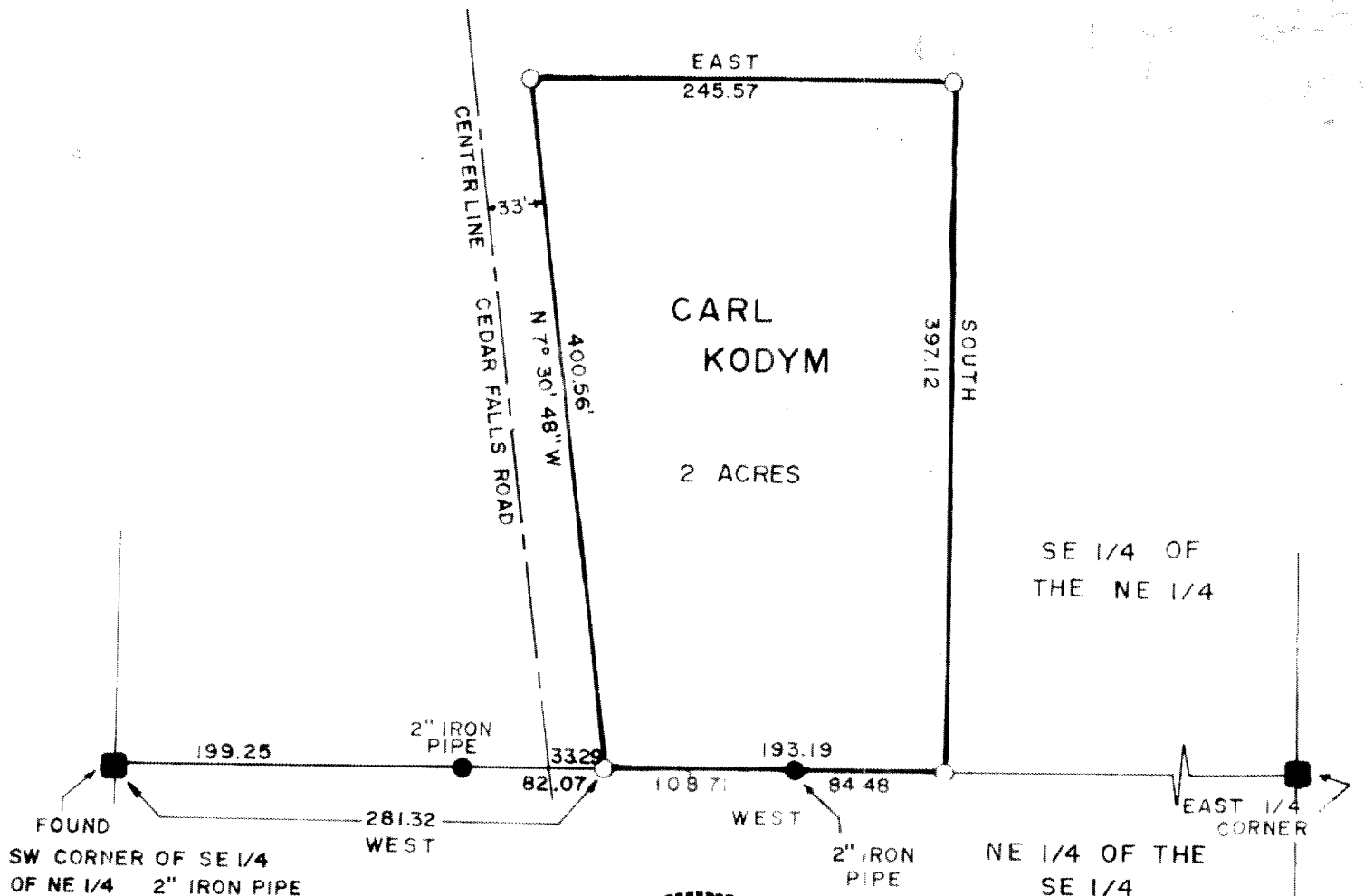
RECEIVED & FILED # **L36**
 Oneida County Surveyor's Office
 Date **FEB. 11 1986**
 By *MJH*
 OCS Area #.....



LEGEND

- 3/4" x 30" IRON ROD
 - FOUND MONUMENTS
- SCALE 1" = 100'
 JULY 1973

BEARINGS IN RELATION
 TO SOUTH LINE OF THE
 SE 1/4 OF THE NE 1/4
 ASSUMED TO BE N 90° 00' E
 FROM SW CORNER TO
 SE CORNER



FOUND
 SW CORNER OF SE 1/4
 OF NE 1/4 2" IRON PIPE
 4" x 4" WOOD POST
 BEARING TREES
 4" SPRUCE S 17° W, 12.7'
 3" SPRUCE N 60° W, 12.5'



HERBERT MOORE
 County Surveyor
 Oneida County, Wisconsin
 Courthouse
 Rhinelander, Wisconsin 54501

24 1973
405

John B. Margitan
 JOHN B. MARGITAN
 LAND SURVEYOR S-1017

VOYAGEUR LAND SURVEYS
 MINOCQUA
 WISCONSIN 54548
 715-356-6889

**9 & LAND SURVEYORS, PLANNERS &
 ENGINEERS**

DRAFTED BY RJB
 UWG. NO. 25/72 A

