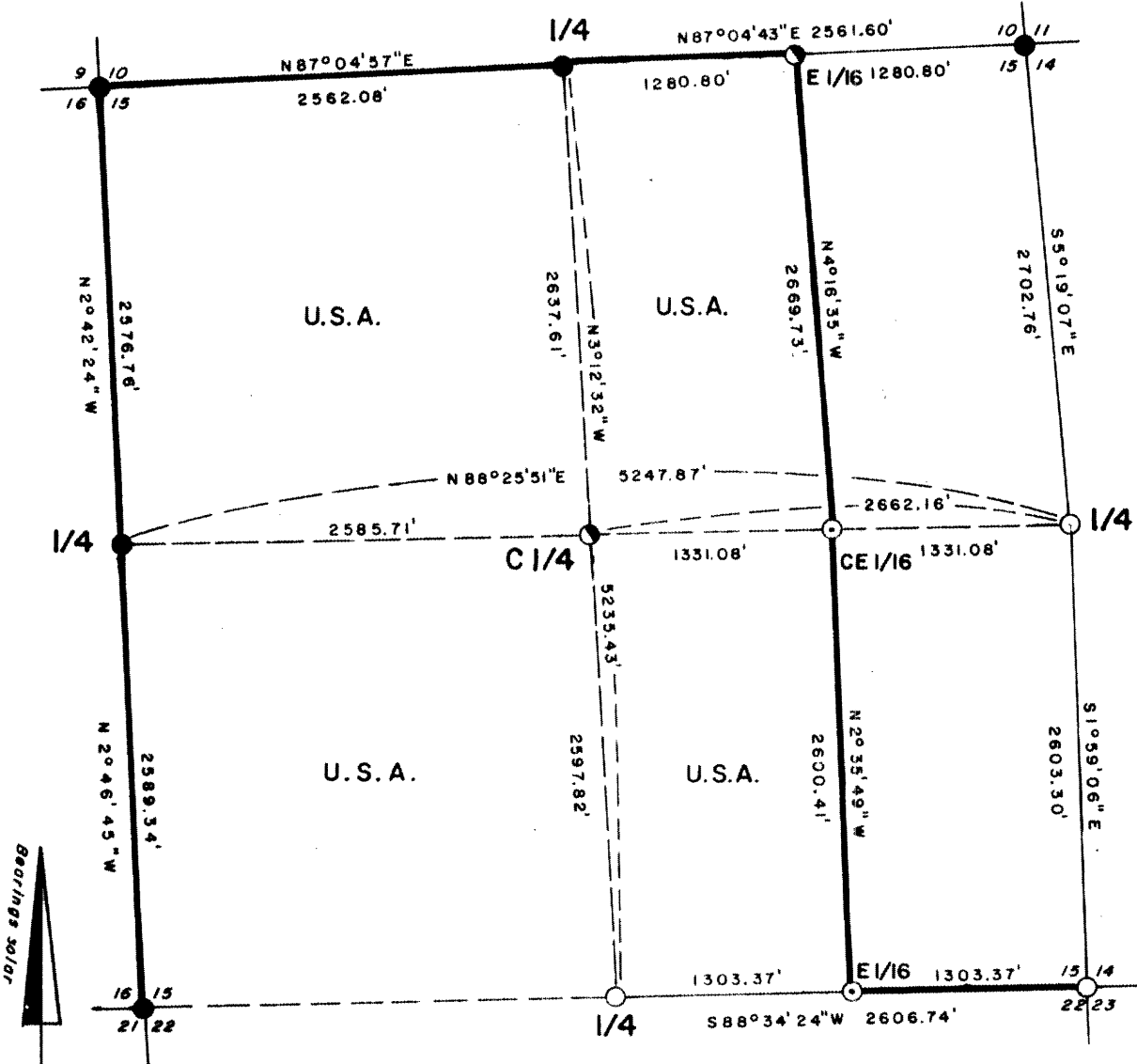
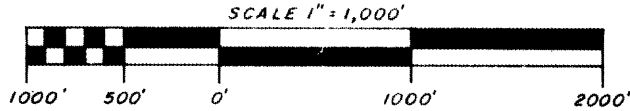


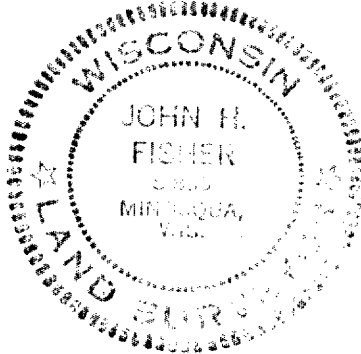
Stock No. 26273

RECEIVED & FILED # **1394**
 Onondaga County Surveyor's Office
 Date **JUN 19 1986**
 By *M.F.H.*
 OCS Area #.....

**PLAT OF SURVEY
 U.S. GOVERNMENT LAND**
 Being the W 1/2 of the NE 1/4, W 1/2 of the SE 1/4 and the W 1/2
 Section 15
 Township 39 North, Range 11 East, Fourth Principal Meridian
 County of Oneida, State of Wisconsin



NORTH COUNTRY SURVEYORS



John H. Fisher
 John H. Fisher R.L.S. S-836

Dated 12/19/84

LEGEND

- = 6" round concrete monument with brass tablet found in place.
- = 2" iron pipe with brass tablet found in place.
- ⊙ = Corner position marked by 2" inside diameter 3 foot long aluminum pipe capped with a 3" diameter aluminum tablet stamped to identify corner.
- ⊕ = Corner position marked by 2" inside diameter 5 foot long aluminum pipe capped with a 3" diameter aluminum tablet stamped to identify corner.
- = Boundary U.S. Government Land.

Drawn by Dennis B. Roberts

Stock No. 26273

SURVEY NOTES

This survey was made by North Country Surveyors pursuant to United States Department of Agriculture, Forest Service Contract "No. 53-56A6-4-00035, Cadastral Survey" for the purpose of recovering, restoring, establishing, marking and perpetuating the corners and boundary lines of the U. S. Government land on the perimeter and within Section 15, T39N, R11E, Fourth Principal Meridian, Oneida County, Wisconsin as shown on the plat herewith.

The original Government subdivision survey of this township was made by William E. Daugherty in 1859.

Two separate Dependent Resurveys have been made tying and establishing various corners of Section 15. One of those resurveys was made by Guy R. Veal, U.S. Cadastral Engineer and dated June 21, 1926. This survey was made to define omitted lands within Section 23. The second resurvey affecting the area is a resurvey of the East half of T39N, R11E, and was completed by Hugh D. Crawford, Cadastral Surveyor on October 18, 1941. Monuments established in these surveys were recovered and this along with the notes of the survey are the basis for this survey.

Bearings between corner positions are true bearings by reference to a solar observation. All distances shown thereon are in feet and hundredths of feet. The control traverse was measured by use of electronic distance measuring equipment. Corners recovered, restored and established by this survey are marked by the monument described in the map legend. Each monumented corner position is referenced to blazed and scribed bearing trees and described objects.

CORNERS RECOVERED

1. The Corner to Section 14, 15, 22 and 23

Corner is monumented by a 2" iron pipe capped with a brass tablet as established by the Bureau of Land Management in the 1926 Dependent Resurvey.

Corner References

Nail in Hemlock	15"	N58°W	27.80 feet
Nail in White Pine	22"	N23°W	24.00 feet
Nail in Cedar	9"	S42°W	32.35 feet
Nail in Hemlock	22"	S82°E	53.60 feet
Steel sign post		East	1.5 feet

2. Corner to Sections 10, 11, 14 and 15

Corner is monumented by a 6" diameter concrete monument with a brass tablet as established by the Bureau of Land Management in the 1941 Resurvey.

Stock No. 26273

Corner References

Nail in Red Pine	6"	S44°W	29.72 feet
Nail in Red Pine	10"	S87°W	28.70 feet
Nail in Red Maple	8"	N62°W	11.40 feet
Nail in White Pine	9"	N23°E	27.10 feet
Steel sign post		East	1.2 feet

3. Corner to Sections 9, 10, 15 and 16

Corner is monumented by a 6" diameter concrete monument with a brass tablet as established by the Bureau of Land Management in the 1941 Resurvey.

Corner References

Nail in Black Spruce	3"	S47°W	38.60 feet
Nail in Black Spruce	3"	N13°W	42.70 feet
Nail in White Pine	8"	S67°E	184.00 feet
Nail in Red Pine	12"	S 3°E	181.10 feet
Steel sign post		S43°E	2.3 feet

4. Corner to Sections 15, 16 21 and 22

Corner is monumented by a 6" diameter concrete monument with a brass tablet as established by the Bureau of Land Management in the 1941 Resurvey

Corner References

Nail in Oak	7"	S65°E	25.8 feet
Nail in White Birch	8"	S15°W	21.3 feet
Nail in Oak	5"	N32°W	26.5 feet
Nail in Oak	12"	N27°E	42.6 feet
Wood sign post		NE	1.5 feet

5. Quarter Corner to Sections 15 and 22

Corner is monumented by a 2" iron pipe with a brass cap as established by the Bureau of Land Management in the 1941 Dependent Resurvey.

Corner References

Nail in White Birch	8"	S87°E	20.6 feet
Nail in White Birch	10"	S 8°E	32.21 feet
Nail in White Birch	7"	S16°W	27.52 feet
Nail in Balsam	5"	S39°W	27.80 feet
Steel sign post		West	0.8 feet

6. Quarter Corner to Sections 14 and 15

Corner is monumented by a 2" iron pipe with a brass cap as established by the Bureau of Land Management in the 1941 Dependent Resurvey.

Stock No. 26273

Corner References

Nail in Oak	9"	S45°E	28.70 feet
Nail in Red Maple	6"	S25°E	20.07 feet
Nail in Sugar Maple	6"	S82°W	6.66 feet
Nail in Red Maple	5"	N23°E	11.96 feet
Steel sign post		East	1.1 feet

7. Quarter Corner to Sections 10 and 15

Corner is monumented by a 6" diameter concrete monument with a brass tablet as established by the Bureau of Land Management in the 1941 Resurvey.

Corner References

Nail in Sugar Maple	11"	S 4°E	26.2 feet
Nail in Sugar Maple	14"	S67°E	25.9 feet
Nail in Sugar Maple	10"	S 9°W	26.8 feet
Nail in Sugar Maple	7"	N38°W	30.8 feet
Wood sign post		SE	1 foot

8. Quarter Corner to Sections 15 and 16

Corner is monumented by a 6" diameter concrete monument with a brass tablet as established by the Bureau of Land Management in the 1941 Resurvey.

Corner References

Nail in Red Maple	10"	N42°E	17.3 feet
Nail in Sugar Maple	11"	N84°W	39.7 feet
Nail in Oak	5"	S31°E	16.5 feet
Nail in Sugar Maple	7"	N15°W	40.3 feet
Wood sign post		NE	1.0 feet

CORNERS ESTABLISHED1. East One Sixteenth to Sections 10 and 15

Corner established at midpoint between the Northeast Section Corner and North Quarter Corner of Section 15.

Corner is a 2" aluminum pipe three feet long with a 3" diameter aluminum tablet stamped to identify corner.

Corner References

Nail in Red Maple	11"	S79°W	36.91 feet
Nail in White Pine	13"	N 9°E	5.13 feet
Nail in Hemlock	12"	S16°E	30.4 feet
Steel sign post		East	1.3 feet

2. Center East Sixteenth Corner

Corner established at midpoint and on line between the Center Quarter Corner and East Quarter Corner of Section 15.

Corner is a 2" aluminum pipe five feet long with a 3" diameter aluminum tablet stamped to identify corner.

Stock No. 26273

Corner References

Nail in Black Spruce	4"	N67°W	7.29 feet
Nail in Tamarack	4"	N30°W	21.90 feet
Nail in Black Spruce	4"	N 1°E	43.4 feet
Steel sign post		North	0.0 feet

3. Center Quarter Corner

Corner established at the intersection of the straight lines between opposing Quarter Corners on the perimeter of Section 15.

Corner is a 2" aluminum pipe three feet long with 3" diameter aluminum tablet stamped to identify corner.

Corner References

Nail in Cedar	8"	S58°E	5.21 feet
Nail in Hemlock	16"	S27°W	21.61 feet
Nail in Yellow Birch	12"	S76°W	20.47 feet
Nail in Cedar	8"	N19°E	16.01 feet
Steel sign post		East	1.5 feet

4. East Sixteenth Corner to Sections 15 and 22

Corner established at midpoint and on line between the Southeast Section Corner and the South Quarter Corner of Section 15.

Corner is a 2" aluminum pipe five feet long with 3" diameter aluminum tablet stamped to identify corner.

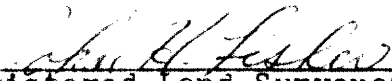
Corner References

Nail in Tamarack	6"	S 8°E	20.40 feet
Nail in Tamarack	5"	S87°W	21.60 feet
Nail in Tamarack	4"	N44°E	21.61 feet

SURVEYOR'S AFFIDAVIT

State of Wisconsin)
County of Oneida)ss

I, John H. Fisher, Land Surveyor, registered in the State of Wisconsin, hereby certify that I have surveyed and subdivided Section 15, T39N, R11E, Fourth Principal Meridian, County of Oneida, State of Wisconsin, in accordance with the rules of the survey of the public lands with the statutes of the State of Wisconsin. The plat map and survey notes are an accurate representation of the corners recovered and established.


Registered Land Surveyor State of Wisconsin

Dated: December 19, 1984

Certificate No. S-836

Date of Survey: April - December 1984