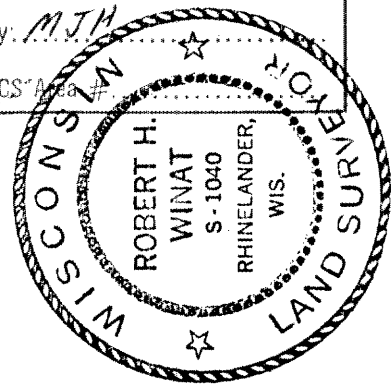


RECEIVED & FILED # **L41**
 Oneida County Surveyor's Office
 Date **FEB 11 1988**
 By: *MJM*
 OCS #

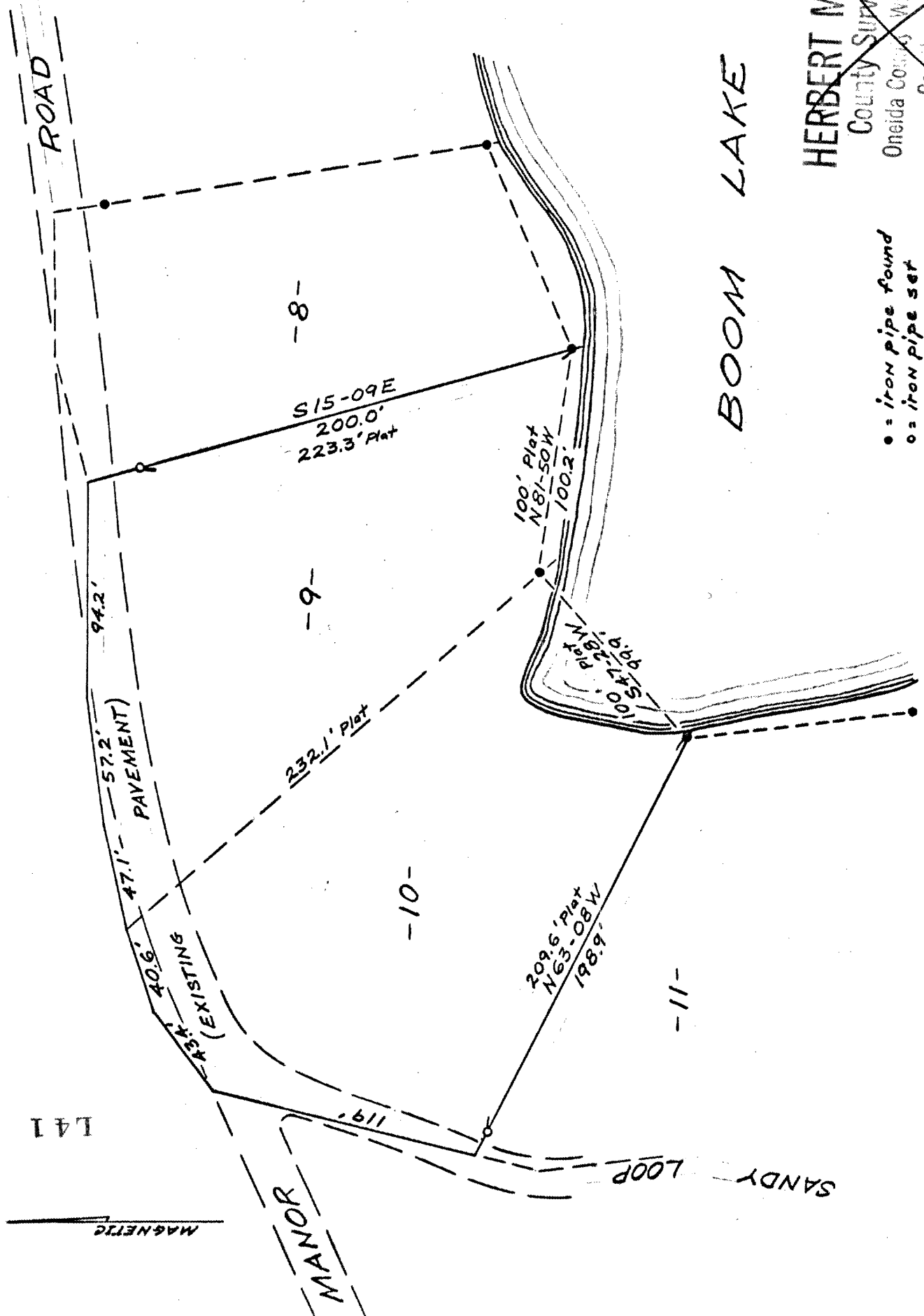


Lots 9 & 10
BLOCK "B"
 PLAT OF
COUNTRY CLUB MANOR
 SECTION 30
 T37N - R9E
 ONEIDA CO. WIS.
 SEPT. '71 1" = 60"

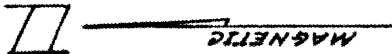
HERBERT MOORE
 County Surveyor
 Oneida County, Wisconsin
 Co. 1010138
 Rhinelander, Wisconsin 54501

Robert H. Winat
 LAND SURVEYOR S-1040

~~DEC 3 1982~~



● = iron pipe found
 ○ = iron pipe set



L41