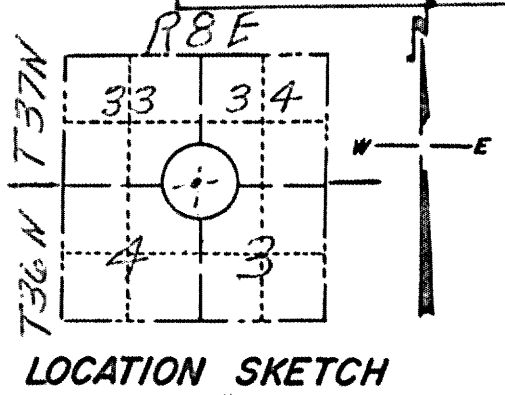


RECEIVED & FILED #422  
 Oneida County Surveyors Office  
 Date 3/18/69  
 By Jmy  
 PAGE \_\_\_\_\_  
 OCS Area # \_\_\_\_\_

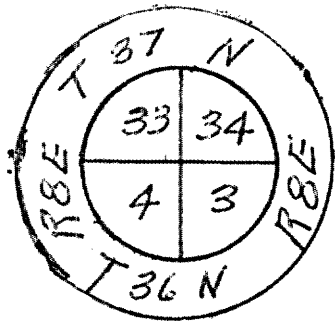
FORM NO. 710

**PRESERVATION OF LANDMARKS**

SECTION 59,635(7) WISCONSIN STATUTES  
 COUNTY Oneida  
 TOWN Crescent  
 HIGHWAY C.T.H. "K"  
 SECTION NO. 3 & 4  
 T. 36 N., R. 8 E.  
 TYPE OF LANDMARK Witness To sec cor.  
 LOCATION INDICATED ON SKETCH X



stationing given is that of project S 0704(5)  
 Concrete monuments are references to the original witness

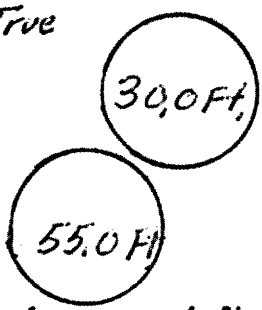


Corner witnessed

C.T.H. "K"

589°41'E

Bearing from the References to the Point  $N 0^{\circ} 16' E$  True  
 Distances are from the reference the point



witness remains in its original location covered by 4 feet of fill. marker is a 2" iron pipe with brass cap, location, about 50 ft so. of the pavement centerline

This space for copy of field notes or ties to the above described landmarks

Field notes or records filed in book no. 8644  
 at the Wis. Dept. of Transportation, Div. of Highways office.  
 City of Rhinelander Oneida County.  
 Located or established by J. Mar Finson May, 1968  
 Title Project Engineer

County Clerk's Office ONEIDA County, Wis. } ss  
 Received for record 2-17-69, 1969

Copy sent to County Surveyor 2-17, 1969

J.B. Usage  
 County Clerk