

RECORD AND CERTIFICATION OF U.S.  
PUBLIC LAND SURVEY CONTROL STATION

E-D-716-72

RECEIVED & FILED # **442.6**

Oncida County Surveyor's Office  
State of Wisconsin / Department of Transportation

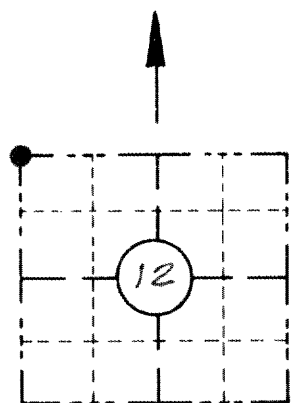
Date **JUN 23 1966**

By *JHM*

District <b>7</b>	Project I. D. <b>1593-0-00</b>	Located by <b>EUGENE DAHL</b>			
Corner <b>N.W.</b>	<b>12</b> SECTION	Township <b>36 N</b>	Range (E,W) <b>8E</b>	County <b>ONEIDA</b>	
Wisconsin Coordinates CORNER	East (X) <b>2,141,166.165</b>	North (Y) <b>168,781.076</b>	Elevation (Z)	Zone <b>N.</b>	
Control Station Name	East (X)	North (Y)	Elevation (Z)	Zone	
Horizontal — <b>NORTH AMERICAN, 1927</b>		CONTROL DATUM Vertical — <b>MEAN SEA LEVEL, 1929 ADJUSTMENT</b>			
Horizontal — <b>2<sup>ND</sup></b> Order		SURVEY CONTROL		Vertical — _____ Order	

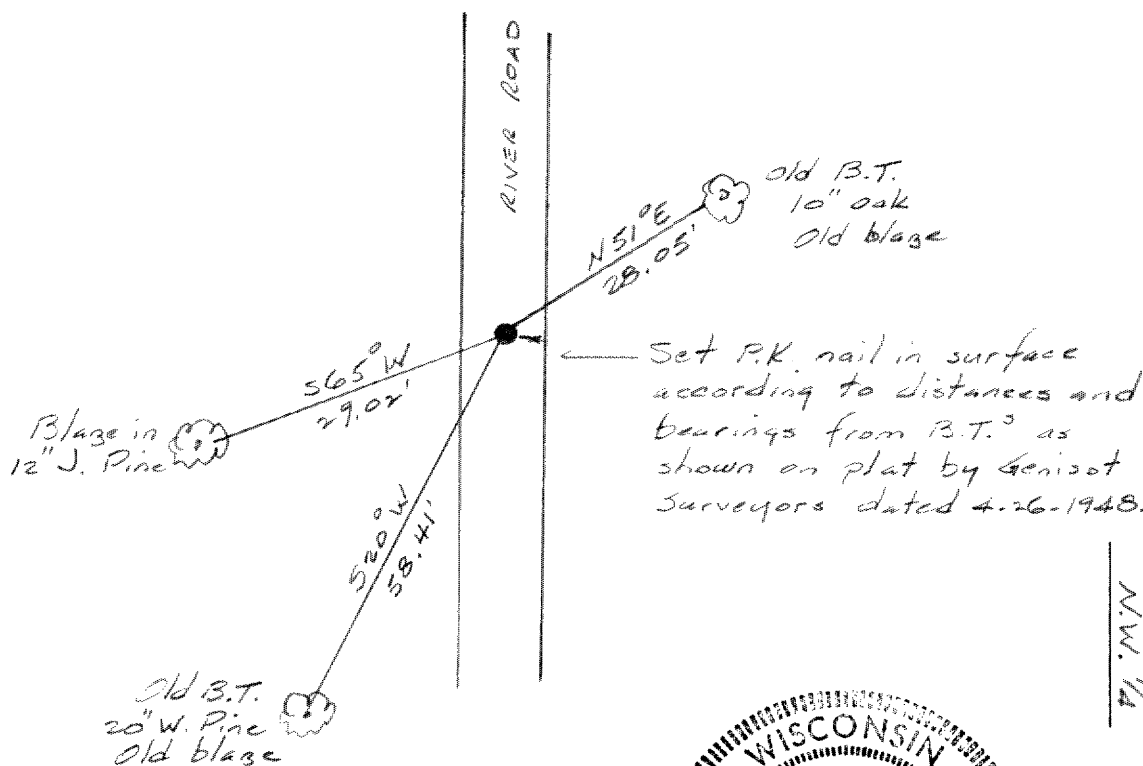
*SURVEY CREW CHIEF  
DIVISION OF HIGHWAYS*

SKETCH

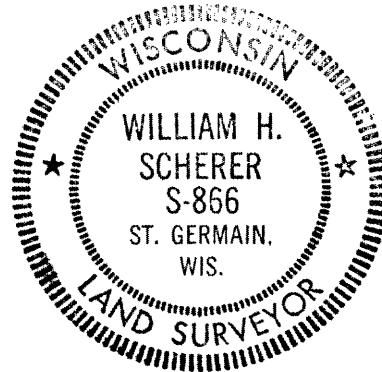


LOCATION SKETCH

(Location of landmark indicated by "X")



I hereby certify that on the 8<sup>th</sup> day of April 1974, that I did ~~locate~~ establish the above corner ~~which was evidenced by~~ \_\_\_\_\_; I further certify that to perpetuate the location of such corner I did, at the exact location thereof, place a ~~permanent marker consisting of~~ P.K. nail in the surface; I further certify that I did establish 1 reference ~~or witness monuments~~ consisting of a 12" J. Pine



SEAL

located as shown above;

Note: This work done by Eugene Dahl under the supervision of:

Signature Registered Land Surveyor <i>William H. Scherer</i>	Registration No. S-866	Title <i>Survey Supervisor</i>
---	---------------------------	-----------------------------------

CORNER  
N.W. 1/4  
SECTION  
12  
TOWN  
36 N  
RANGE  
8E