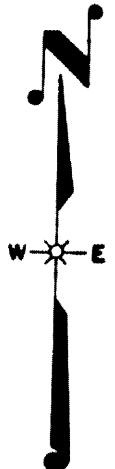


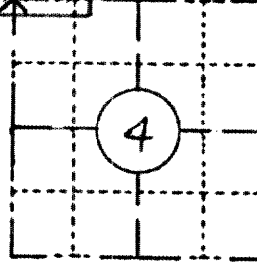
FIELD SURVEY NOTES
PRESERVATION OF LANDMARKS
 (Pursuant to Section 59.635(7) Wisconsin Statutes)

RECEIVED & FILED # **L428**
 Oneida County Surveyor's Office
 Date... **6/13/83** ...
 By.....
 OCS Area #..... **X**

File Under
533, 36-4
 Wisconsin Department of Transportation
 E-D-707-871



COUNTY LINCOLN		
TOWN SOMO		
HIGHWAY USH B		
SECTION 4	TOWNSHIP T35N	RANGE R4E
TYPE OF LANDMARK BERNTSEN ALUMINUM MONUMENT		

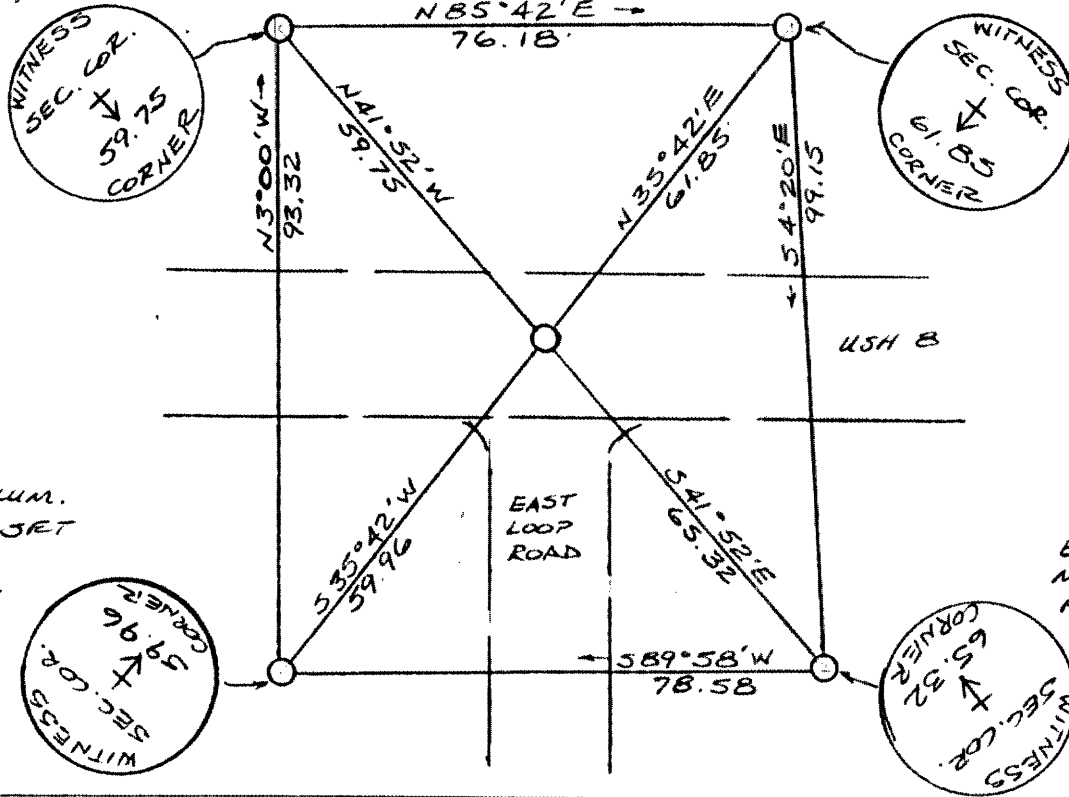


LOCATION SKETCH
 (Location of landmark indicated by "x")

This space for copy of field notes or ties to the above described landmarks

BERNTSEN ALUM.
 MONUMENT SET
 FLUSH AND
 STAMPED:

BERNTSEN ALUM.
 MONUMENT SET
 FLUSH AND
 STAMPED:



BERNTSEN ALUM.
 MONUMENT SET
 FLUSH AND
 STAMPED:

BERNTSEN ALUM.
 MONUMENT SET
 FLUSH AND
 STAMPED:

FILED UNDER PROJECT
 NUMBER **1580-06-00**

SHC DISTRICT OFFICE NUMBER 7	CITY Rhinelande	COUNTY ONEIDA
--	---------------------------	-------------------------

LOCATED OR ESTABLISHED BY
 NAME **Sack Wallis**
 TITLE **Survey Crew Chief** DATE **6/9/83**

COUNTY CLERK'S OFFICE COUNTY OF Oneida WISCONSIN } 55	
DATE RECEIVED FOR RECORD 6-13-83	DATE COPY SENT TO COUNTY SURVEYOR 6-13-83
SIGNATURE OF COUNTY CLERK D. P. McDonald	