

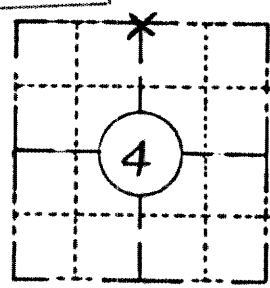
RECEIVED & FILED # **L42-9**
 Oneida County Surveyor's Office
 Date **JUN 27 1983**
 By.....
 OCS Area #.....

File Under
S33 36-4

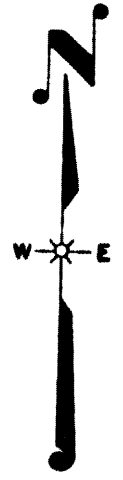
Wisconsin Department of Transportation
 E-D-707-871

FIELD SURVEY NOTES
PRESERVATION OF LANDMARKS
 (Pursuant to Section 59.635(7) Wisconsin Statutes)

COUNTY LINCOLN		
TOWN Somo		
HIGHWAY USH 8		
SECTION 4	TOWNSHIP T35N	RANGE R4E
TYPE OF LANDMARK BERNTSEN ALUMINUM MONUMENT		



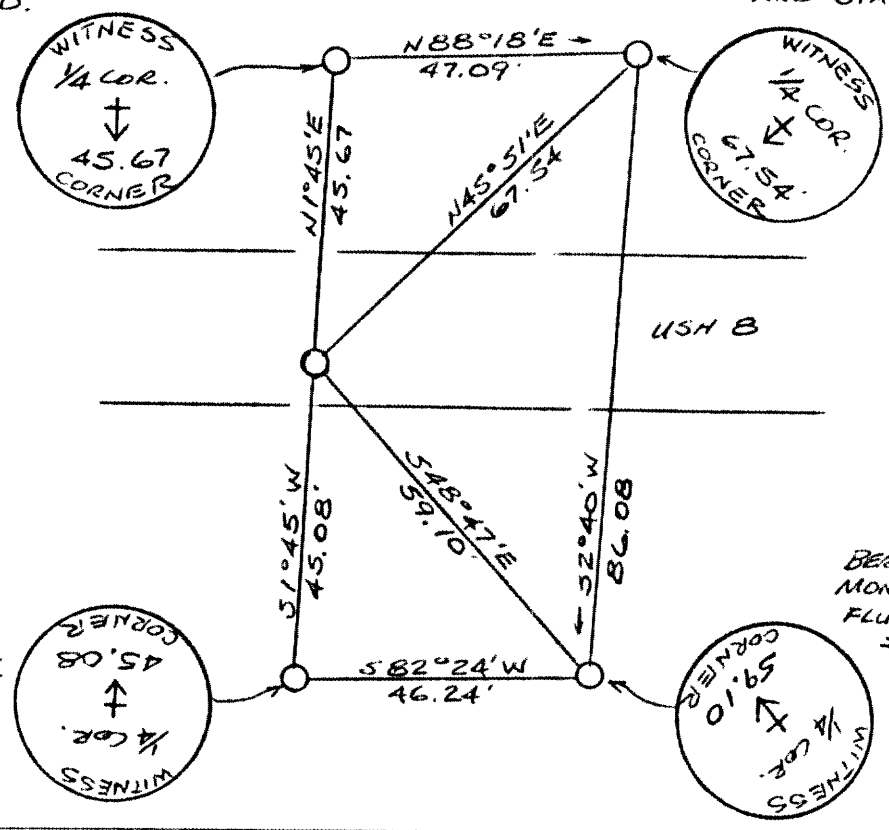
LOCATION SKETCH
 (Location of landmark indicated by "x")



This space for copy of field notes or ties to the above described landmarks

BERNTSEN ALUMINUM
 MONUMENT SET
 FLUSH AND STAMPED:

BERNTSEN ALUM.
 MONUMENT SET FLUSH
 AND STAMPED:



BERNTSEN ALUM.
 MONUMENT SET
 FLUSH AND STAMPED:

BERNTSEN ALUM.
 MONUMENT SET
 FLUSH AND
 STAMPED:

FILED UNDER PROJECT NUMBER 1580-06-00		
SHC DISTRICT OFFICE NUMBER 7	CITY Rhinelander	COUNTY ONEIDA
LOCATED OR ESTABLISHED BY NAME Jack Walker TITLE Survey Crew Chief DATE 6/9/83		

COUNTY CLERK'S OFFICE COUNTY OF Oneida WISCONSIN } 55	
DATE RECEIVED FOR RECORD 6-13-83	DATE COPY SENT TO COUNTY SURVEYOR 6-13-83
SIGNATURE OF COUNTY CLERK A. R. Macdonald	