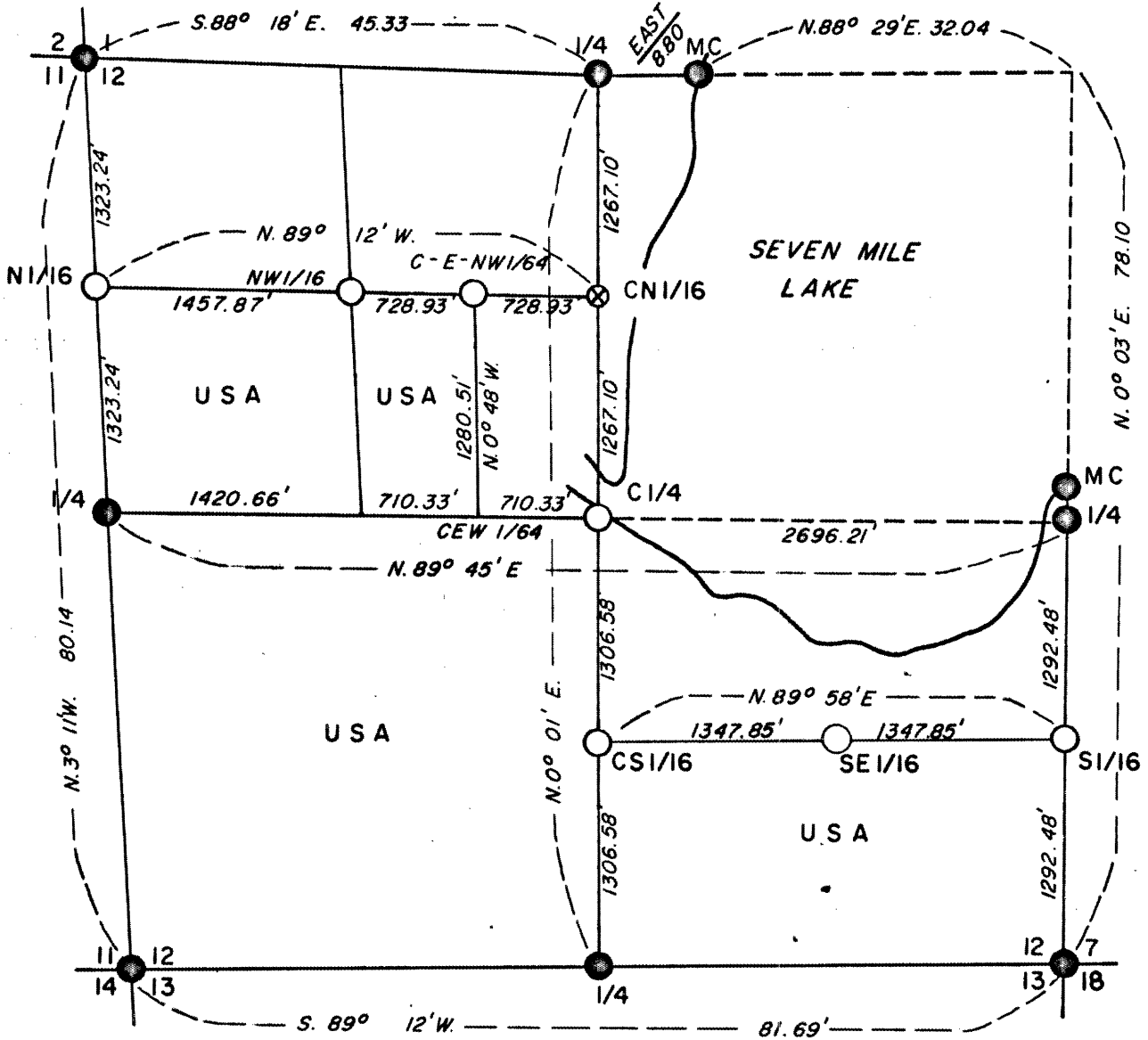
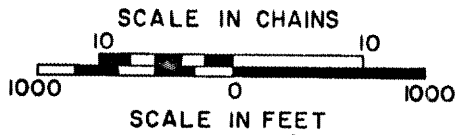


RECEIVED & FILED # L44
 Oneida County Surveyor's Office
 Date FEB. 1. 1988
 By MJH
 OCS Area #

PLAT OF SURVEY U.S. GOVERNMENT LAND

Being the SW1/4 NW1/4, SW1/4 SE1/4, SE1/4 SW1/4, W1/2 SW1/4,
 South 40 acres of Lot 4 (SE1/4 SE1/4), West 40 acres of Lot 3 (NE1/4 SW1/4)
 and West 20 acres of Lot 2 (W1/2 SE1/4 NW1/4) in Section 12
 Township 39 North, Range 11 East Fourth Principal Meridian
 COUNTY OF ONEIDA, STATE OF WISCONSIN



Note: Bearings and distances on outside perimeter of section are from 1941 dependent resurvey.

LEGEND

- 1941 Dependent Resurvey Monument.
- Corner position marked by a 2 inch inside diameter by 5 foot long concrete filled galvanized iron pipe capped with a 3 inch diameter brass tablet stamped to identify corner.
- ⊗ Iron rod found in place.
- MC Meander Corner.
- USA U.S. Government Land.

HERBERT MOORE
 Surveyor
 Oneida County, Wisconsin
 Court 304
 Oneida, Wisconsin

memo
 Mar 14-72

285

L44

PLAT OF SURVEY U.S. GOVERNMENT LAND

Being the SW1/4NW1/4, SW1/4SE1/4, SE1/4SW1/4, W1/2SW1/4,
South 40 acres of Lot 4(SE1/4SE1/4), West 40 acres of Lot 3(NE1/4SW1/4)
and West 20 acres of Lot 2(W1/2SE1/4NW1/4) in Section 12
Township 39 North, Range 11 East Fourth Principal Meridian
COUNTY OF ONEIDA, STATE OF WISCONSIN

SURVEY NOTES

This survey was made by the U.S. Department of Agriculture, Forest Service, to establish and mark controlling interior subdivision corners of U.S. Government land.

The original Government subdivision survey of this township was made in 1859. A dependent resurvey of the east half of the township was made by the U.S. Department of Interior, General Land Office, in 1941. The corners of the dependent resurvey on the perimeter of section 12 were recovered as control for the subdivision survey of section 12. All U.S. Government land in section 12 was acquired in 1931.

CORNERS ESTABLISHED

1. Center Quarter Corner - Position established on the intersection of the straight lines between opposing 1941 dependent resurvey quarter corners on the perimeter of section 12.
Corner references:

Metal sign post	Southwest	1.0 feet
SE Corner Cabin	N. 38° W.	44.90 feet

2. South Sixteenth Corner to Sections 7-12, T39N, Rs.11-12E
Position established at mid-point and on line between the southeast corner and the east quarter corner of section 12.
Corner references:

Red Pine 4"	S. 24°26' E.	38.95 feet
White Pine 11"	S. 68°02' W.	25.44 feet
Cedar Sign Post	S.E.	1.4 feet
Center Road	North	15 feet

3. North Sixteenth Corner to Sections 11-12
Position established at mid-point and on line between the northwest corner and the west quarter corner of section 12.
Corner references:

Maple 9"	N. 32° W.	20.16 feet
White Birch 10"	S. 7° E.	22.07 feet
Metal Sign Post	S.E.	1.0 feet

4. Center South Sixteenth Corner
Position established at mid-point and on line between the south quarter corner and the center quarter corner.
Corner references:

Tamarack 5"	S. 13° E.	91.98 feet
Tamarack 4"	S. 50° W.	61.99 feet

144

PLAT OF SURVEY U.S. GOVERNMENT LAND

Being the SW 1/4 NW 1/4, SW 1/4 SE 1/4, SE 1/4 SW 1/4, W 1/2 SW 1/4,
South 40 acres of Lot 4 (SE 1/4 SE 1/4), West 40 acres of Lot 3 (NE 1/4 SW 1/4)
and West 20 acres of Lot 2 (W 1/2 SE 1/4 NW 1/4) in Section 12
Township 39 North, Range 11 East Fourth Principal Meridian
COUNTY OF ONEIDA, STATE OF WISCONSIN

5. Southeast Sixteenth Corner

Position established on the intersection of the straight lines between opposing sixteenth corner positions on the perimeter of the southeast quarter of the section.

Corner reference:

Iron Pipe	N. 30°39.5' W.	21.92 feet
-----------	----------------	------------

6. Northwest Sixteenth Corner

Position established on the intersection of the straight lines between opposing sixteenth corner positions on the perimeter of the northwest quarter of the section.

Corner references:

White Spruce 14"	N. 88° E.	21.72 feet
Red Maple 13"	S. 64° W.	22.92 feet
Metal Sign Post	South	1.0 feet

7. Center East Northwest Sixty Fourth Corner

Position established at mid-point and on line between the northwest sixteenth corner and the center north sixteenth corner.

Corner references:

White Spruce 14"	West	253.36 feet
SW Corner Cabin	N. 72° E.	309.70 feet
Metal Sign Post	SW	1.2 feet
Edge Swamp	West	248 feet
Edge Swamp	East	245 feet

8. Center East West Sixty Fourth Corner

Position falls within a flowage.

The field survey notes and a copy of this plat of survey are on file in the Forest Supervisor's Office at Rhinelander, Wisconsin. A copy of this plat of survey is on file in the District Ranger's Office at Three Lakes, Wisconsin.

PLAT OF SURVEY
U.S. GOVERNMENT LAND

Being the SW1/4NW1/4, SW1/4SE1/4, SE1/4SW1/4, W1/2SW1/4,
South 40 acres of Lot 4(SE1/4SE1/4), West 40 acres of Lot 3(NE1/4SW1/4)
and West 20 acres of Lot 2(W1/2SE1/4NW1/4) in Section 12
Township 39 North, Range 11 East Fourth Principal Meridian
COUNTY OF ONEIDA, STATE OF WISCONSIN

SURVEYOR'S AFFIDAVIT

STATE OF WISCONSIN)
COUNTY OF ONEIDA) SS

I, Jean F. Resvick, cadastral surveyor, U.S. Forest Service, and a registered land surveyor in the State of Wisconsin, hereby certify that I have surveyed and subdivided section 12, township 39 north, range 11 east, fourth principal meridian, State of Wisconsin.

The plat map and survey notes herewith are a correct representation of the land surveyed and divided. I have surveyed and subdivided said section in accordance with the rules for the survey of the public lands and with the statutes of the State of Wisconsin.



Jean F. Resvick
Cadastral Surveyor, U.S. Forest Service
R.L.S. State of Wisconsin
Certificate S-802

Date of Survey 1969, 1971