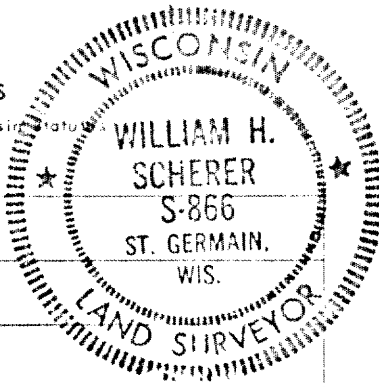


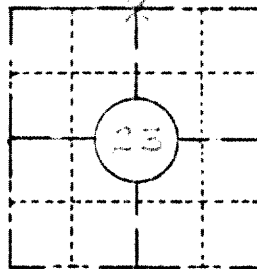
Herb Moore
 RECEIVED & FILED # 1460
 Oneida County Surveyor's Office
 Wisconsin Department of Transportation
 Date JUN 27 1981
 By M
 OCS Area # _____

FIELD SURVEY NOTES
 PRESERVATION OF LANDMARKS

(Pursuant to Section 59.635(7) Wisconsin Statutes)



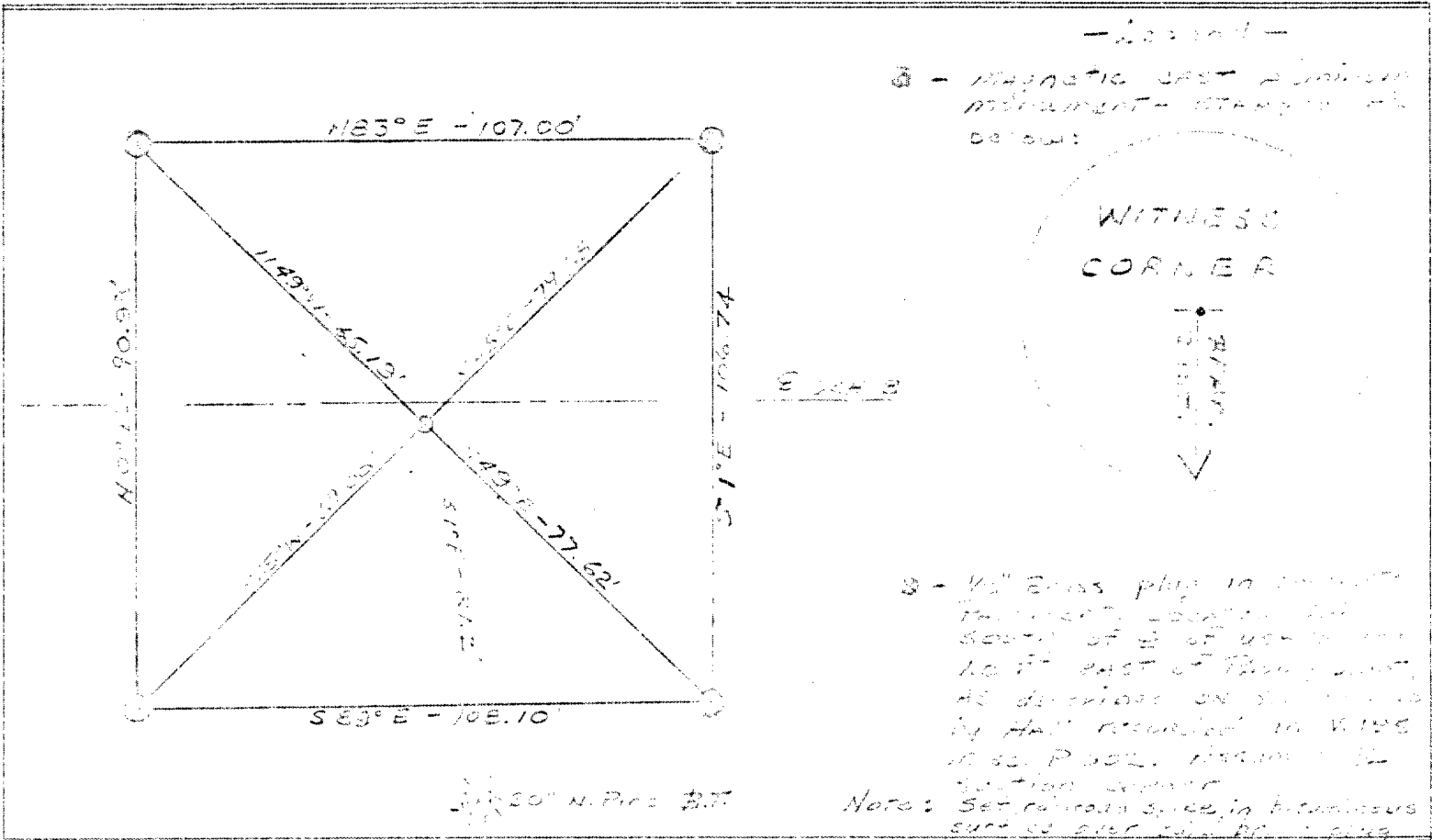
COUNTY <i>Oneida</i>		
TOWN <i>Deer</i>		
HIGHWAY <i>105 S</i>		
SECTION <i>23</i>	TOWNSHIP <i>26 N</i>	RANGE <i>9 E</i>
TYPE OF LANDMARK <i>Bress. Pin in concrete Pierment</i>		



LOCATION SKETCH
 (Location of landmark indicated by "x")



This space for copy of field notes or ties to the above described landmarks



FILED UNDER PROJECT NUMBER <i>1.D. 157-1-50</i>			COUNTY CLERK'S OFFICE		
SHE DISTRICT OFFICE NUMBER <i>7</i>		CITY <i>Deer</i>	COUNTY <i>Oneida</i>	COUNTY OF <i>Oneida</i>	WISCONSIN } ES
LOCATED OR ESTABLISHED BY NAME <i>William H. Scherer</i>			DATE RECEIVED FOR RECORD <i>June 27 1981</i>	DATE COPY SENT TO COUNTY SURVEYOR	
TITLE <i>Preservation of Landmarks</i>			SIGNATURE OF COUNTY CLERK <i>Debra J. ...</i>		