

RECEIVED & FILED # L464

Oneida County Surveyor's Office

Date ~~1963~~ JUN 27 1964

By M

OCS Area #

PAGE

FORM NO. 710

PRESERVATION OF LANDMARKS

SECTION 59,635(7) WISCONSIN STATUTES

COUNTY Oneida

TOWN Pelican

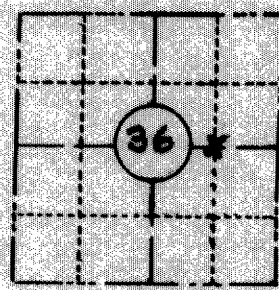
HIGHWAY G.T.H. 6

SECTION NO. 36

T. 36 N., R. 9 E.

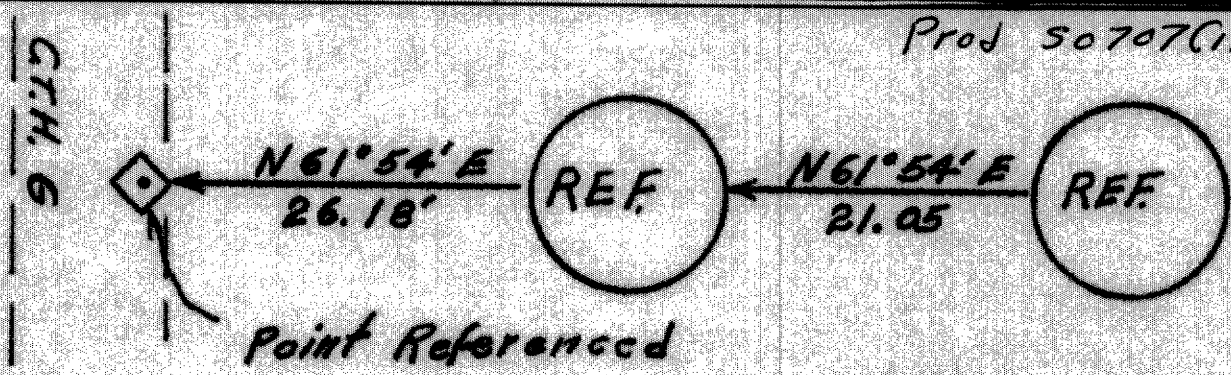
TYPE OF LANDMARK 1/16 Corner

LOCATION INDICATED ON SKETCH X



LOCATION SKETCH

Prod 50707(12)



Concrete Reference Monuments are witness to the location of a 1/16 Corner as placed and witnessed by a Rhinelander Paper Co. Survey. Monuments were placed after reconstruction of G.T.H. 6

This space for copy of field notes or ties to the above described landmarks

Field notes or records filed in book no. 10M 178
 at the State Highway Commission office.
 City of Rhinelander, Oneida County.
 Located or established by Referenced by: J. Martinson, 1963
 Title Prod. Eng.

County Clerk's Office ONEIDA County, Wis. }
 Received for record 11/17, 1964

Copy sent to County Surveyor 11/17, 1964

Burleigh Weger
 O.P. County Clerk