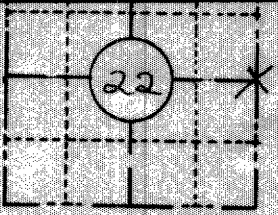


FIELD SURVEY NOTES
PRESERVATION OF LANDMARKS
 (Pursuant to Section 59.635(7) Wisconsin Statutes)

RECEIVED & FILED #...467...
 Oneida County Surveyor's Office
 Wisconsin Department of Transportation
 Date... JUN 27 1988
 By... M
 OCS Area #.....

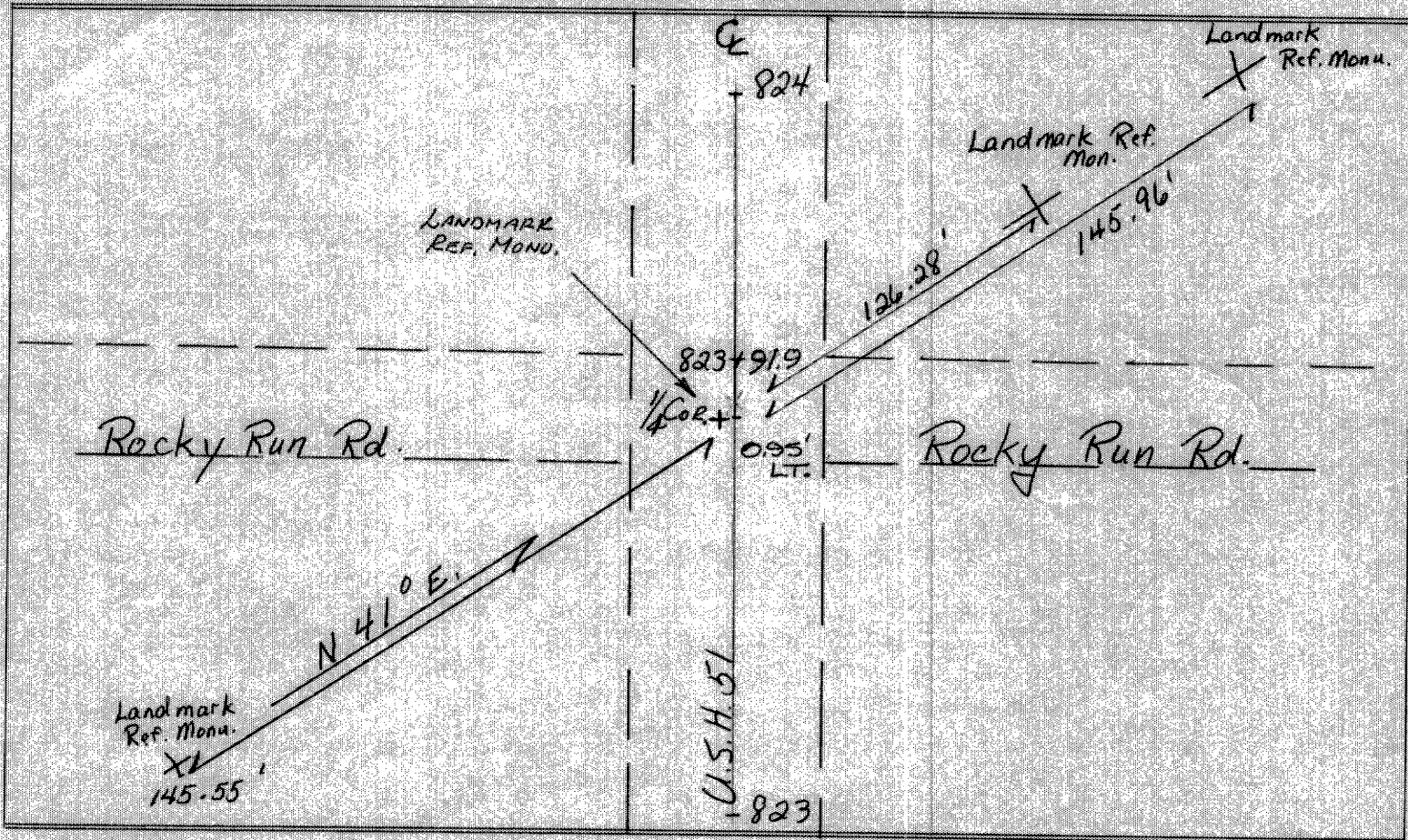
COUNTY <i>Oneida</i>		
TOWN <i>Cassian</i>		
HIGHWAY <i>U.S.H. 51</i>		
SECTION <i>22</i>	TOWNSHIP <i>37 N</i>	RANGE <i>6 E</i>
TYPE OF LANDMARK <i>E 1/4 Cor</i>		



LOCATION SKETCH
 (Location of landmark indicated by "x")



This space for copy of field notes or ties to the above described landmarks



FILED UNDER PROJECT NUMBER <i>1177-1-70</i>		
SBC DISTRICT OFFICE NUMBER <i>7</i>	CITY <i>Rhineland</i>	COUNTY <i>Oneida</i>
LOCATED OR ESTABLISHED BY NAME <i>Richard A. Huth</i>		
TITLE <i>ENG II</i>		DATE <i>9/7/71</i>

COUNTY CLERK'S OFFICE COUNTY OF <i>Oneida</i> WISCONSIN } SS	
DATE RECEIVED FOR RECORD <i>Nov 9, 1971</i>	DATE COPY SENT TO COUNTY SURVEYOR <i>11/9/71</i>
SIGNATURE OF COUNTY CLERK <i>Elmer K. Jander</i>	