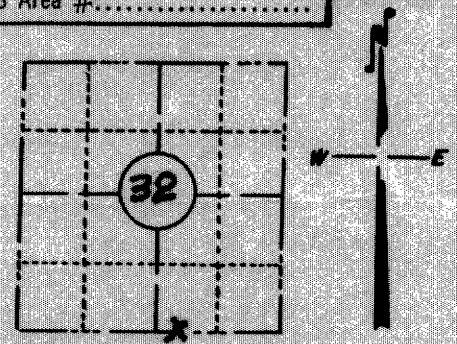


PRESERVATION OF LANDMARKS

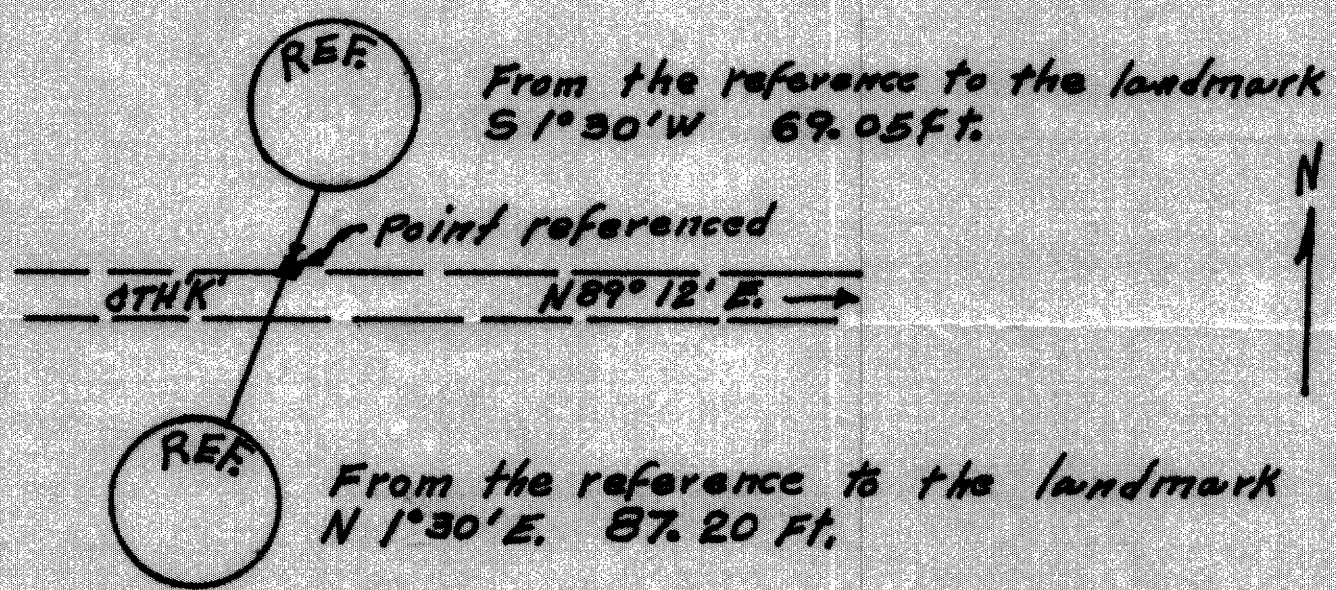
RECEIVED & FILED # L469
 Oneida County Surveyor's Office
 Date JUN. 27 1988
 By M
 DCS Area #.....

PAGE

SECTION 59,635(7) WISCONSIN STATUTES
 COUNTY Oneida
 TOWN Newbold
 HIGHWAY C.T.H. K
 SECTION NO. 32
37 N., R 8 E.
 TYPE OF LANDMARK Property Corner
 LOCATION INDICATED ON SKETCH X



LOCATION SKETCH



The landmark referenes indicated in the above sketch consist of two concrete monuments placed during reconstruction of C.T.H. K and prior to any disturbance of the landmark in place.

This space for copy of field notes or ties to the above described landmarks

Field notes or records filed in book no. 8652
 at the State Highway Commission of Wisconsin office.
 City of Rhineland Oneida County.
 Located or established by J. Martinson May 17, 1965
 Title Project Eng.

County Clerk's Office ONEIDA County, Wis. }
 Received for record JAN. 18, 1966

Copy sent to County Surveyor JAN. 18, 1966

P. L. Boyce
 County Clerk